



STATE OF WASHINGTON

## OFFICE OF FINANCIAL MANAGEMENT

Insurance Building, PO Box 43113 • Olympia, Washington 98504-3113 • (360) 902-0555

**FOR IMMEDIATE RELEASE:** June 30, 2016

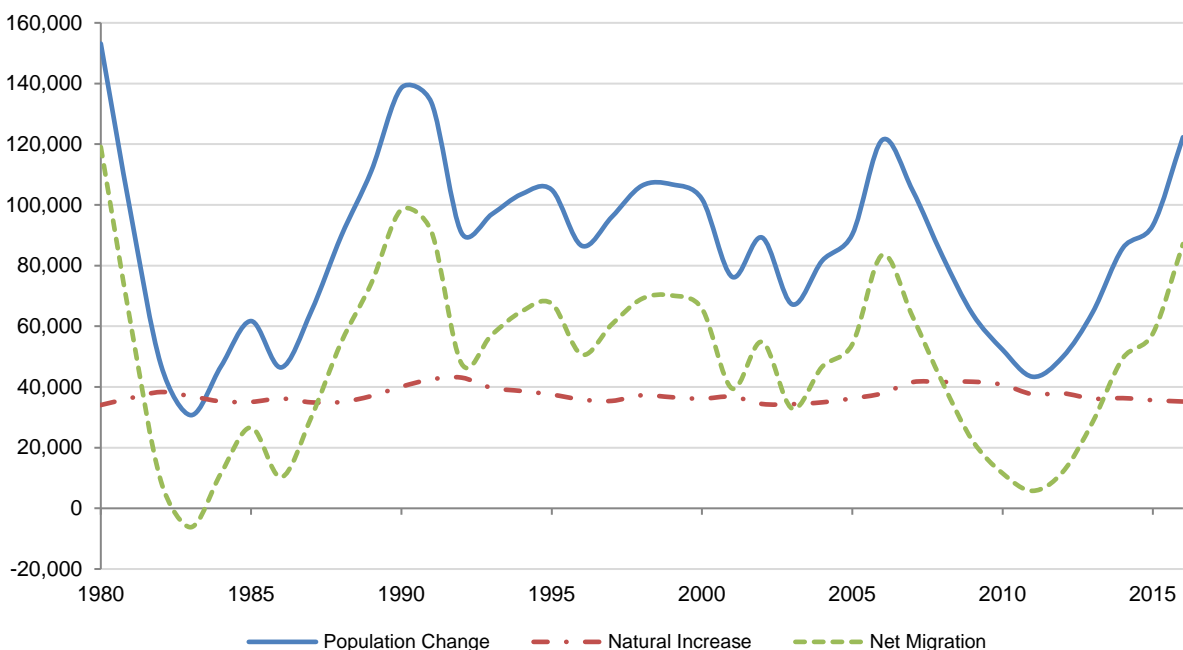
**CONTACT:** Yi Zhao, 360-902-0592

### Washington's population grows at fastest pace since 2007

**OLYMPIA, WA** – Washington's population grew by an estimated 1.73 percent over the past year — the largest percentage increase since 2007. The number of people in the state increased by 122,300 to 7,183,700, according to annual estimates prepared by the Office of Financial Management.

Migration was once again the primary driver behind Washington's population growth. From 2015 to 2016, net migration (people moving in vs. people leaving) to the state totaled 87,100, compared to 57,600 the previous year. Net migration accounts for 71 percent of the state's population growth this year, with natural increase (births minus deaths) responsible for the other 29 percent (35,200 people).

Components of State Population Change



Seventy-eight percent of the state's total population increase occurred in the five largest metropolitan counties — Clark, King, Pierce, Snohomish and Spokane — whose economic activity continues to attract people from out of state. Similar to last year, nonmetropolitan counties accounted for less than 5 percent of state population growth.

The April 1, 2016, population estimate for Washington's incorporated cities and towns is 4,666,800, an increase of 102,400 people over the previous year. Eighty-four percent of the population growth in incorporated areas is due to natural increase and migration while 16 percent (16,300 people) is due to annexation. The top 10 cities for population growth, in descending order, were Seattle, Sammamish, Bellevue, Tumwater, Tacoma, Vancouver, Federal Way, Renton, Everett and Pasco. Renton became the state's eighth city to exceed 100,000 population.

Population in the state's unincorporated areas increased by 19,900 over the previous year. This number would have been 36,100 if not for annexation. The top 10 unincorporated areas for population growth, in descending order, were Snohomish, Pierce, Clark, Kitsap, Island, Spokane, Whatcom, Skagit, Kittitas and Chelan.

Housing growth in 2016 increased by nearly 6 percent from the previous year. The state added 34,400 housing units, compared to a 32,400-unit increase in 2015. The level of housing growth remains below the prior decade average of 43,500 units per year. Statewide, half of all new housing units were associated with multifamily structures. Nearly 73 percent of all new housing is located in the five largest metropolitan counties. King County leads all counties with almost 13,400 new units, or 39 percent of the state's total housing increase.

Additional information on the latest population estimates for the state, counties, cities and towns is available at <http://www.ofm.wa.gov/pop/april1/>.

###

**Table 1. Population, Change and Rank**

County	Total Population			Numeric Change			Percent Change			Percent of State Total		
	2010	2015	2016	2010-16	2015-16	Rank	2010-16	2015-16	Rank	2010	2016	Rank
State	6,724,540	7,061,410	7,183,700	459,160	122,290	--	6.83	1.73	--	100.00	100.00	--
Adams	18,728	19,410	19,510	782	100	27	4.18	0.52	25	0.28	0.27	31
Asotin	21,623	22,010	22,150	527	140	24	2.44	0.64	22	0.32	0.31	28
Benton	175,177	188,590	190,500	15,323	1,910	10	8.75	1.01	17	2.61	2.65	10
Chelan	72,453	75,030	75,910	3,457	880	15	4.77	1.17	15	1.08	1.06	17
Clallam	71,404	72,650	73,410	2,006	760	16	2.81	1.05	16	1.06	1.02	18
Clark	425,363	451,820	461,010	35,647	9,190	4	8.38	2.03	4	6.33	6.42	5
Columbia	4,078	4,090	4,050	-28	-40	35	-0.69	-0.98	38	0.06	0.06	37
Cowlitz	102,410	104,280	104,850	2,440	570	20	2.38	0.55	24	1.52	1.46	12
Douglas	38,431	39,990	40,720	2,289	730	17	5.96	1.83	7	0.57	0.57	26
Ferry	7,551	7,710	7,700	149	-10	33	1.97	-0.13	33	0.11	0.11	36
Franklin	78,163	87,150	88,670	10,507	1,520	12	13.44	1.74	8	1.16	1.23	14
Garfield	2,266	2,260	2,200	-66	-60	36	-2.91	-2.65	39	0.03	0.03	39
Grant	89,120	93,930	94,610	5,490	680	19	6.16	0.72	20	1.33	1.32	13
Grays Harbor	72,797	73,110	72,820	23	-290	39	0.03	-0.40	36	1.08	1.01	19
Island	78,506	80,600	82,910	4,404	2,310	9	5.61	2.87	1	1.17	1.15	15
Jefferson	29,872	30,880	31,090	1,218	210	23	4.08	0.68	21	0.44	0.43	27
King	1,931,249	2,052,800	2,105,100	173,851	52,300	1	9.00	2.55	2	28.72	29.30	1
Kitsap	251,133	258,200	262,590	11,457	4,390	6	4.56	1.70	10	3.73	3.66	7
Kittitas	40,915	42,670	43,710	2,795	1,040	13	6.83	2.44	3	0.61	0.61	24
Klickitat	20,318	21,000	21,270	952	270	21	4.69	1.29	14	0.30	0.30	29
Lewis	75,455	76,660	76,890	1,435	230	22	1.90	0.30	29	1.12	1.07	16
Lincoln	10,570	10,720	10,640	70	-80	37	0.66	-0.75	37	0.16	0.15	35
Mason	60,699	62,200	62,320	1,621	120	26	2.67	0.19	30	0.90	0.87	20
Okanogan	41,120	41,860	41,730	610	-130	38	1.48	-0.31	35	0.61	0.58	25
Pacific	20,920	21,210	21,180	260	-30	34	1.24	-0.14	34	0.31	0.29	30
Pend Oreille	13,001	13,240	13,290	289	50	31	2.22	0.38	27	0.19	0.19	33
Pierce	795,225	830,120	844,490	49,265	14,370	3	6.20	1.73	9	11.83	11.76	2
San Juan	15,769	16,180	16,320	551	140	24	3.49	0.87	18	0.23	0.23	32
Skagit	116,901	120,620	122,270	5,369	1,650	11	4.59	1.37	12	1.74	1.70	11
Skamania	11,066	11,430	11,500	434	70	29	3.92	0.61	23	0.16	0.16	34
Snohomish	713,335	757,600	772,860	59,525	15,260	2	8.34	2.01	5	10.61	10.76	3
Spokane	471,221	488,310	492,530	21,309	4,220	7	4.52	0.86	19	7.01	6.86	4
Stevens	43,531	44,030	44,100	569	70	29	1.31	0.16	31	0.65	0.61	23
Thurston	252,264	267,410	272,690	20,426	5,280	5	8.10	1.97	6	3.75	3.80	6
Wahkiakum	3,978	3,980	4,000	22	20	32	0.55	0.50	26	0.06	0.06	38
Walla Walla	58,781	60,650	60,730	1,949	80	28	3.32	0.13	32	0.87	0.85	21
Whatcom	201,140	209,790	212,540	11,400	2,750	8	5.67	1.31	13	2.99	2.96	9
Whitman	44,776	47,250	47,940	3,164	690	18	7.07	1.46	11	0.67	0.67	22
Yakima	243,231	249,970	250,900	7,669	930	14	3.15	0.37	28	3.62	3.49	8

**Table 2. Components of Population Change**

County	2010–16			2015–16		
	Natural Increase	Net Migration	Population Change	Natural Increase	Net Migration	Population Change
State	218,778	240,382	459,160	35,193	87,097	122,290
Adams	1,698	-916	782	255	-155	100
Asotin	19	508	527	-20	160	140
Benton	7,664	7,659	15,323	1,152	758	1,910
Chelan	1,594	1,863	3,457	248	632	880
Clallam	-1,552	3,558	2,006	-253	1,013	760
Clark	13,976	21,671	35,647	2,232	6,958	9,190
Columbia	-119	91	-28	-26	-14	-40
Cowlitz	730	1,710	2,440	101	469	570
Douglas	1,343	946	2,289	234	496	730
Ferry	-82	231	149	-9	-1	-10
Franklin	7,812	2,695	10,507	1,278	242	1,520
Garfield	-32	-34	-66	-7	-53	-60
Grant	5,233	257	5,490	809	-129	680
Grays Harbor	-21	44	23	-1	-289	-290
Island	1,366	3,038	4,404	148	2,162	2,310
Jefferson	-925	2,143	1,218	-197	407	210
King	76,205	97,646	173,851	13,132	39,168	52,300
Kitsap	5,661	5,796	11,457	971	3,419	4,390
Kittitas	710	2,085	2,795	89	951	1,040
Klickitat	206	746	952	33	237	270
Lewis	289	1,146	1,435	8	222	230
Lincoln	-71	141	70	-4	-76	-80
Mason	-26	1,647	1,621	-35	155	120
Okanogan	681	-71	610	50	-180	-130
Pacific	-664	924	260	-151	121	-30
Pend Oreille	-173	462	289	-22	72	50
Pierce	31,932	17,333	49,265	5,299	9,071	14,370
San Juan	-294	845	551	-60	200	140
Skagit	1,965	3,404	5,369	260	1,390	1,650
Skamania	102	332	434	14	56	70
Snohomish	26,681	32,844	59,525	4,323	10,937	15,260
Spokane	10,245	11,064	21,309	1,294	2,926	4,220
Stevens	105	464	569	10	60	70
Thurston	6,505	13,921	20,426	951	4,329	5,280
Wahkiakum	-99	121	22	4	16	20
Walla Walla	731	1,218	1,949	59	21	80
Whatcom	4,577	6,823	11,400	718	2,032	2,750
Whitman	1,093	2,071	3,164	135	555	690
Yakima	13,713	-6,044	7,669	2,171	-1,241	930

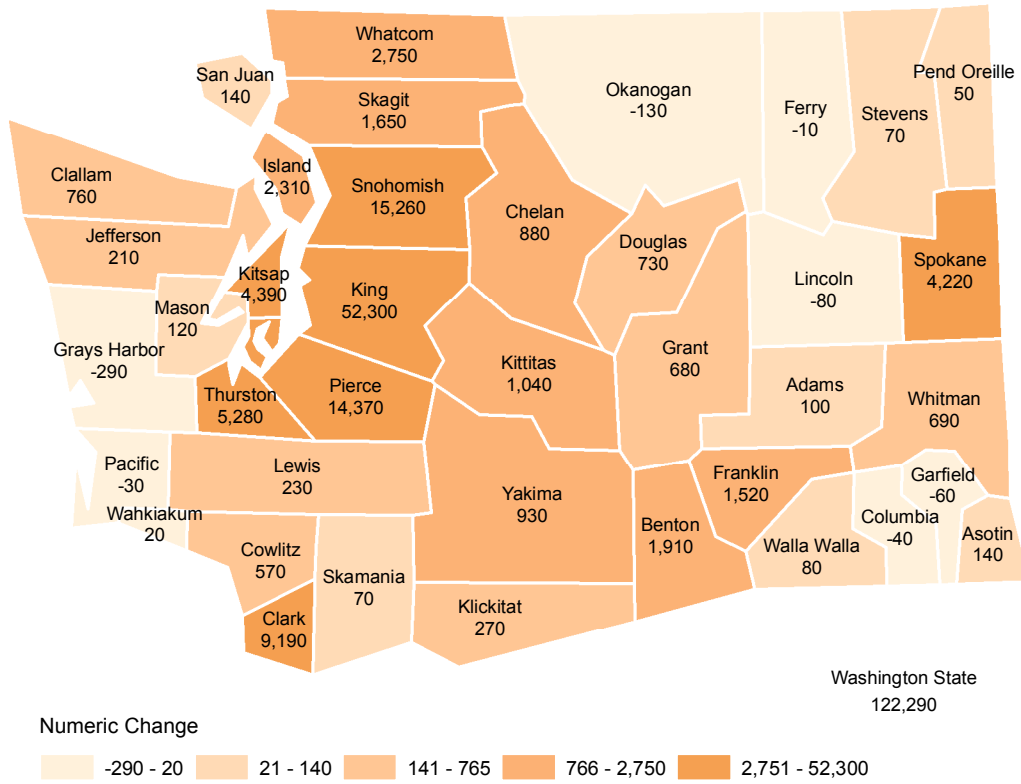
**Table 3. Top 25 Cities by Population Change**

<u>Municipality</u>	Numeric Change		Change Due to Annexation	<u>Municipality</u>	Percent Change		Change Due to Annexation
	2015-16	Rank	2015-16		2015-16	Rank	2015-16
Seattle	24,400	1	0	Sammamish	22.55	1	10,660
Sammamish	11,270	2	10,660	Tumwater	20.63	2	3,255
Bellevue	4,400	3	0	Rock Island	11.56	3	0
Tumwater	3,940	4	3,255	Ridgefield	7.34	4	11
Tacoma	3,800	5	0	Pateros	6.67	5	0
Vancouver	3,100	6	0	Granger	6.59	6	0
Federal Way	2,910	7	0	Gig Harbor	5.96	7	0
Renton	2,830	8	0	Milton	4.20	8	223
Everett	2,500	9	0	Liberty Lake	3.90	9	0
Pasco	2,320	10	1,111	Yelm	3.86	10	0
Kent	1,600	11	0	Sultan	3.85	11	0
Lacey	1,520	12	193	Fife	3.82	12	0
Auburn	1,515	13	0	Kenmore	3.81	13	0
Spokane	1,400	14	0	Moxee	3.81	14	0
Redmond	1,380	15	0	Issaquah	3.78	15	0
Bothell	1,340	16	0	Seattle	3.68	16	0
Bellingham	1,270	17	256	Sumas	3.41	17	0
Issaquah	1,260	18	0	Pasco	3.40	18	1,111
Kirkland	1,220	19	0	Orting	3.36	19	0
Burien	1,190	20	0	Carnation	3.35	20	0
Bremerton	1,090	21	0	Lake Stevens	3.34	21	0
Lake Stevens	1,000	22	0	Farmington	3.33	22	0
Puyallup	900	23	0	Ruston	3.31	23	0
Kennewick	830	24	84	Lacey	3.30	24	193
Kenmore	820	25	0	Bellevue	3.26	25	0
Spokane Valley	820	25	0				

**Table 4. Top 10 Unincorporated Areas by Population Change**

<u>Area</u>	Numeric Change		Change Due to Annexation
	2015-16	Rank	2015-16
Unincorporated Snohomish	8,735	1	-54
Unincorporated Pierce	6,210	2	-223
Unincorporated Clark	4,165	3	-38
Unincorporated Kitsap	2,370	4	0
Unincorporated Island	1,860	5	0
Unincorporated Spokane	1,345	6	0
Unincorporated Whatcom	750	7	-256
Unincorporated Skagit	640	8	-172
Unincorporated Kittitas	530	9	0
Unincorporated Chelan	495	10	-133

### Numeric Change in Population: 2015–2016



### Percent Change in Population: 2015–2016

