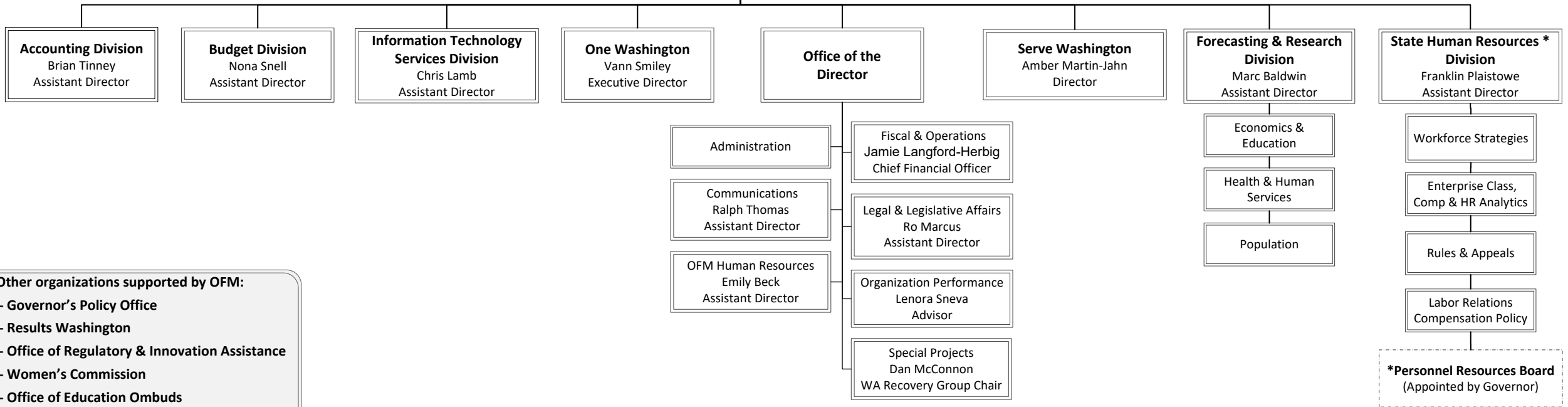


Office of Financial Management

Jay Inslee
Governor

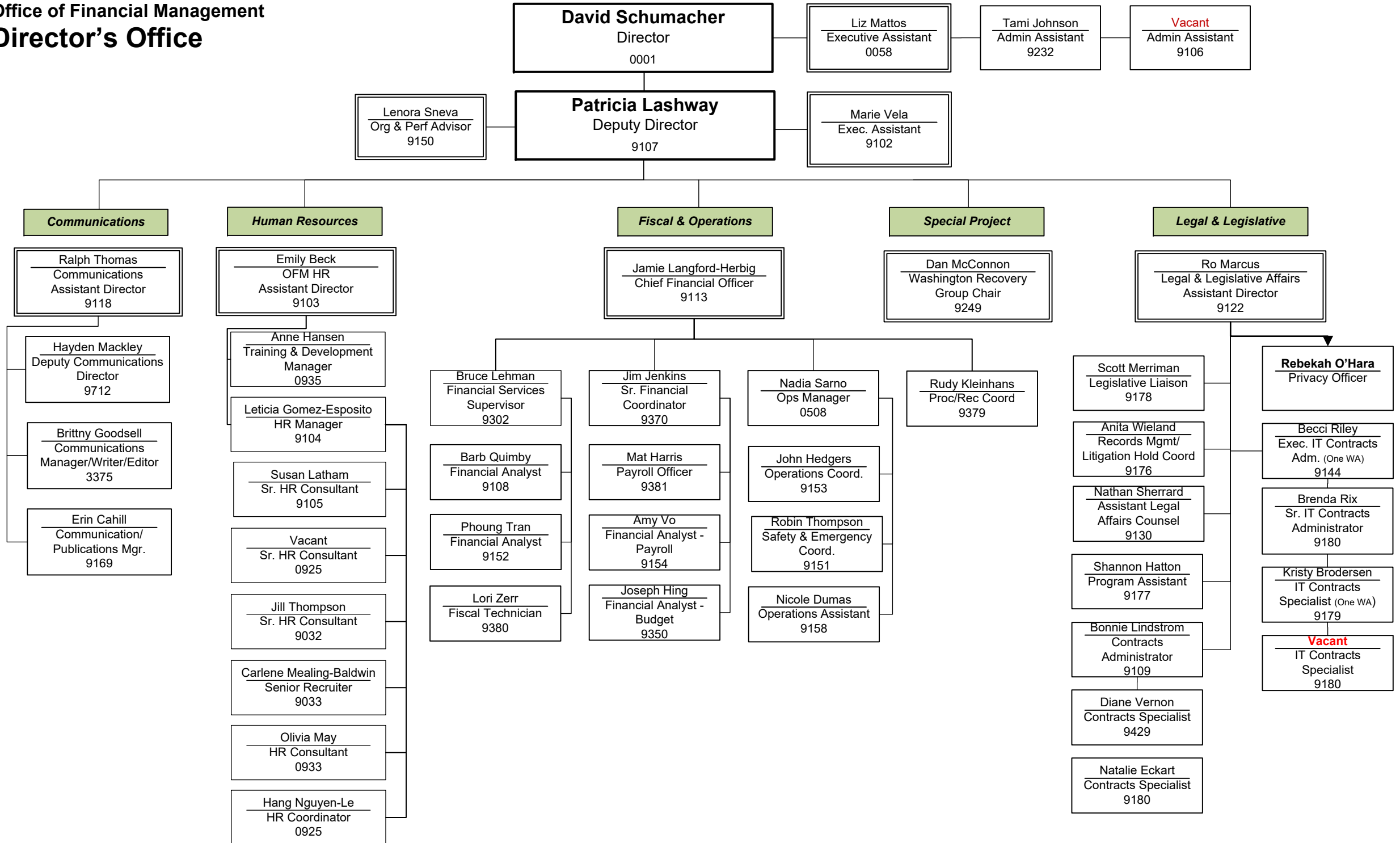
David Schumacher
Director
(Appointed by Governor)

Patricia Lashway
Deputy Director

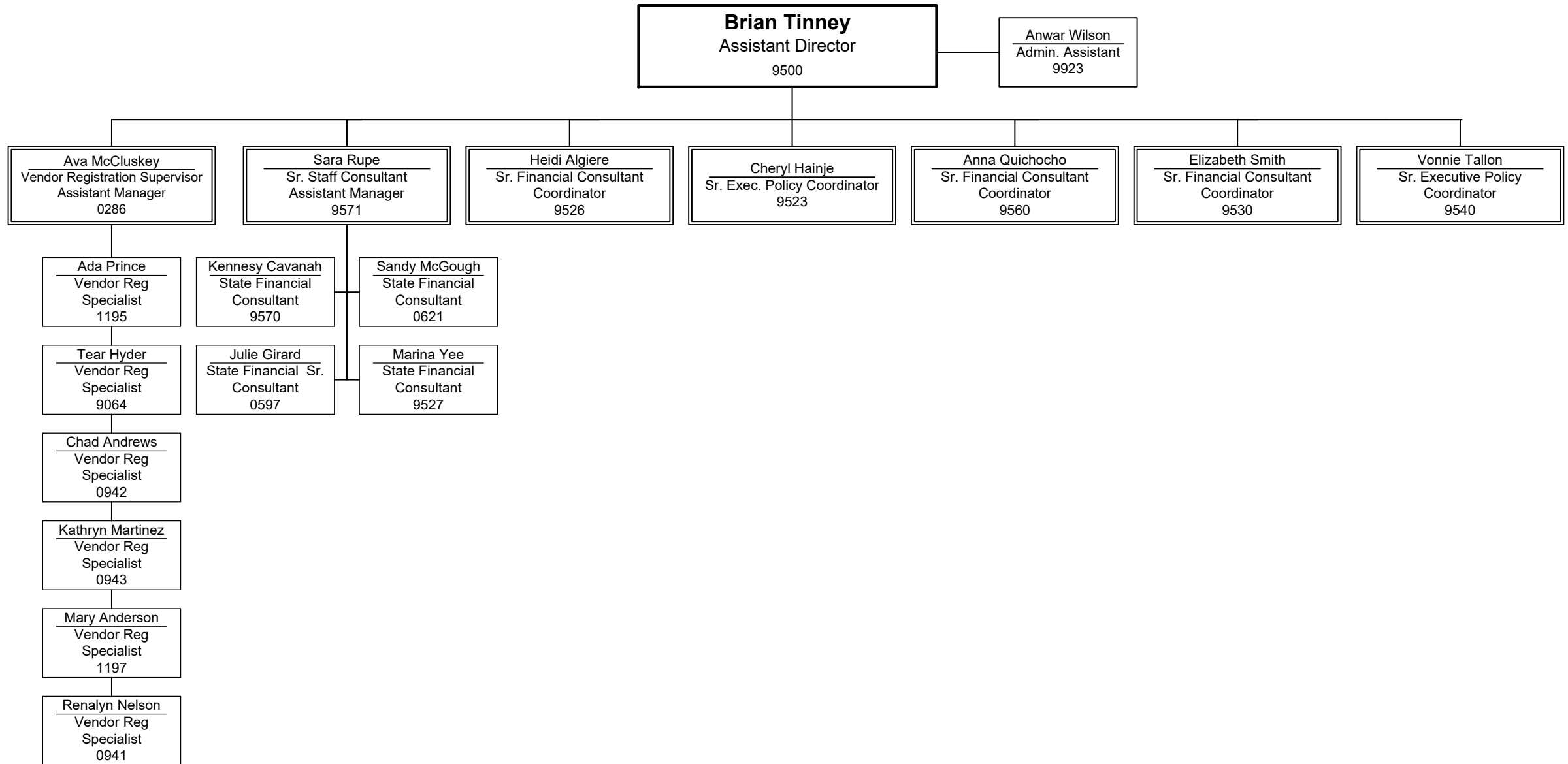


- Other organizations supported by OFM:**
- Governor’s Policy Office
 - Results Washington
 - Office of Regulatory & Innovation Assistance
 - Women’s Commission
 - Office of Education Ombuds
 - Office of Corrections Ombuds
 - Office of the Family and Children Ombuds
 - LGBTQ Commission
 - Equity Office

Office of Financial Management Director's Office

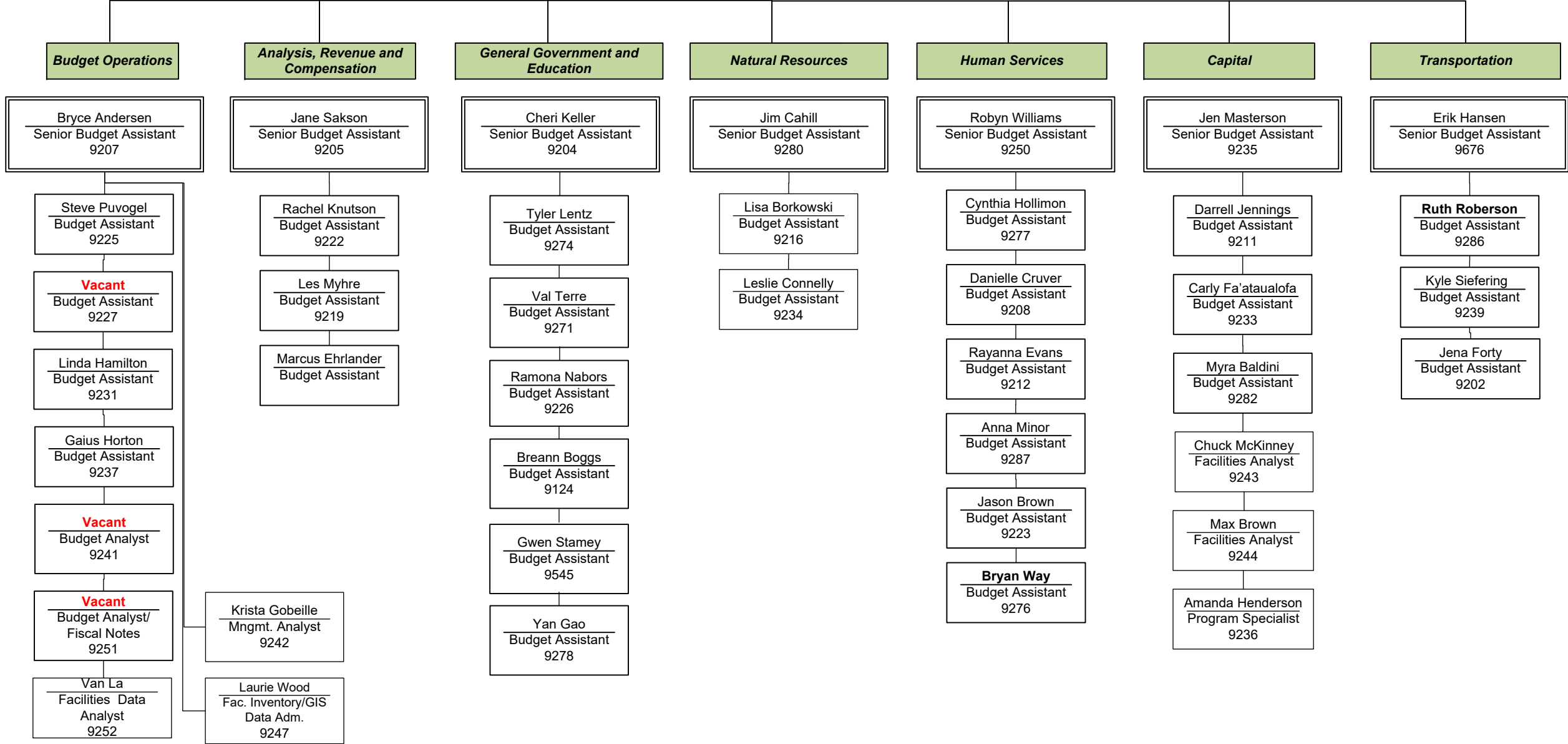


Office of Financial Management
Accounting Division

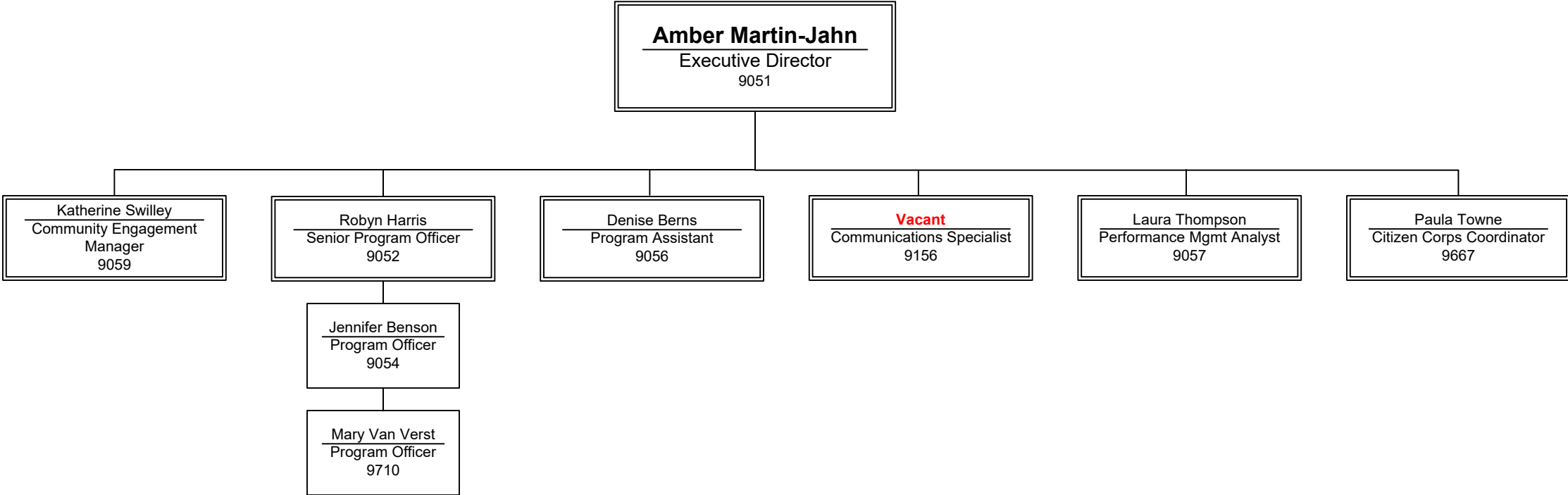


**Office of Financial Management
Budget Division**

Nona Snell
Assistant Director
9201



Office of Financial Management
Serve Washington



Office of Financial Management Forecasting and Research

Marc Baldwin
Assistant Director

Rachel Hughes
Administrative Assistant
9605

Jordan Elwanger
Administrative Assistant
9600

Economic, Revenue, Labor Forecasts and Education

Jim Schmidt
Senior Forecast Coord
9618

Fanny Roberts
Senior Forecast Analyst
9609

Bob Baker
Senior Forecast Analyst
9621

Stephen Cleverdon
Senior Forecast Analyst
9606

Lamont Moore
ERDC Senior Education
Research Analyst - HE
9628

Vivien Chen
Senior Education
Research Analyst
9639

Teresa Greene
Senior Forecast Analyst
9642

Carol Jenner
ERDC Education
Research Analyst - HE
9645

George Hough
Education Research
Analyst
9631

Karen Pyle
Senior Forecast Analyst
9608

Donya Karimi
ERDC Sr. Ed Research
Analyst/Early Learning
9629

Bonnie Nelson
Senior Forecast Analyst
9612

Thomas Aldrich
Forecast Analyst
9615

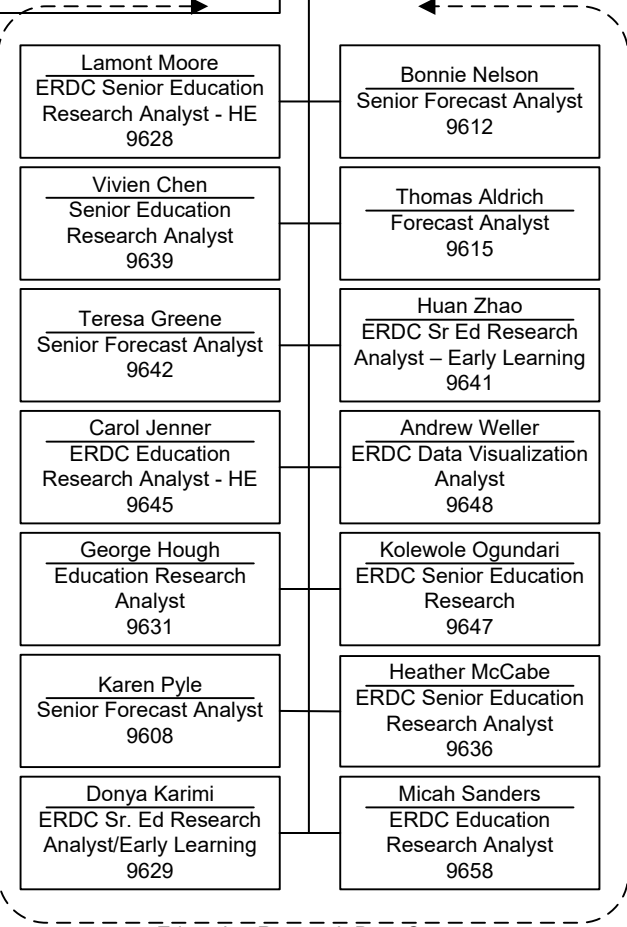
Huan Zhao
ERDC Sr Ed Research
Analyst – Early Learning
9641

Andrew Weller
ERDC Data Visualization
Analyst
9648

Kolewole Ogundari
ERDC Senior Education
Research
9647

Heather McCabe
ERDC Senior Education
Research Analyst
9636

Micah Sanders
ERDC Education
Research Analyst
9658



Education Research Data Center

Human Services, Social Services, Criminal Justice, Health

Thea Mounts
Senior Forecast Coord
9603

Dan Bolton
Senior Forecast Analyst
9604

Keri-Anne Jetzer
Forecast Analyst
9634

Tomas Mosquera
Forecast Analyst
9607

Wei Yen
Senior Forecast Analyst
9795

Carl Wolfhagen
Senior Forecast Analyst
9617

Nhan Ho
Senior Forecast Analyst
(Medicaid Forecast)
9655

Dennis McDermot
Senior Forecast Analyst
9640

Matthew Landon
Forecast/Research
Analyst - SJS
9643

Leah Landon
Sex Offender Policy Bd.
Coord
9646

Joe Lee
Senior Forecast
Research Analyst
0945

Mandy Stahre
Sr. Forecast Analyst
(WA-ACPD)
9649

Eddy Rauser
Senior Forecast Analyst
(Medicaid Forecast)
9653

Xingguo Zhang
Senior Forecast Analyst
(Medicaid Forecast)
9654

Population Estimates

Mike Mohrman
Senior Forecast Coord
9602

Erica Gardner
Senior Forecast Analyst
9610

Curtis Mack
Senior Forecast Analyst
9614

Nate Chase
Forecast Analyst
9657

Robert Kemp
Forecast Analyst
9613

Thomas Kimpel
Forecast Analyst
9626

Lisa McLean
Complete Count
Committee Coord.
9661

Forecasting & Research Systems

Tim Norris
Senior Forecast Coord
9635

Chip Halsey
SeniorP20w
Developer
9620

John Sabel
Senior Education
Research Analyst
9630

Lynn Cole
Forecast Data
Analyst
9623

Megan Schoor
Forecast Resource
Coord. Analyst
9632

Vacant
ERDC Education
Data Analyst
9632

Linda Tamayo
Business Analyst
6005

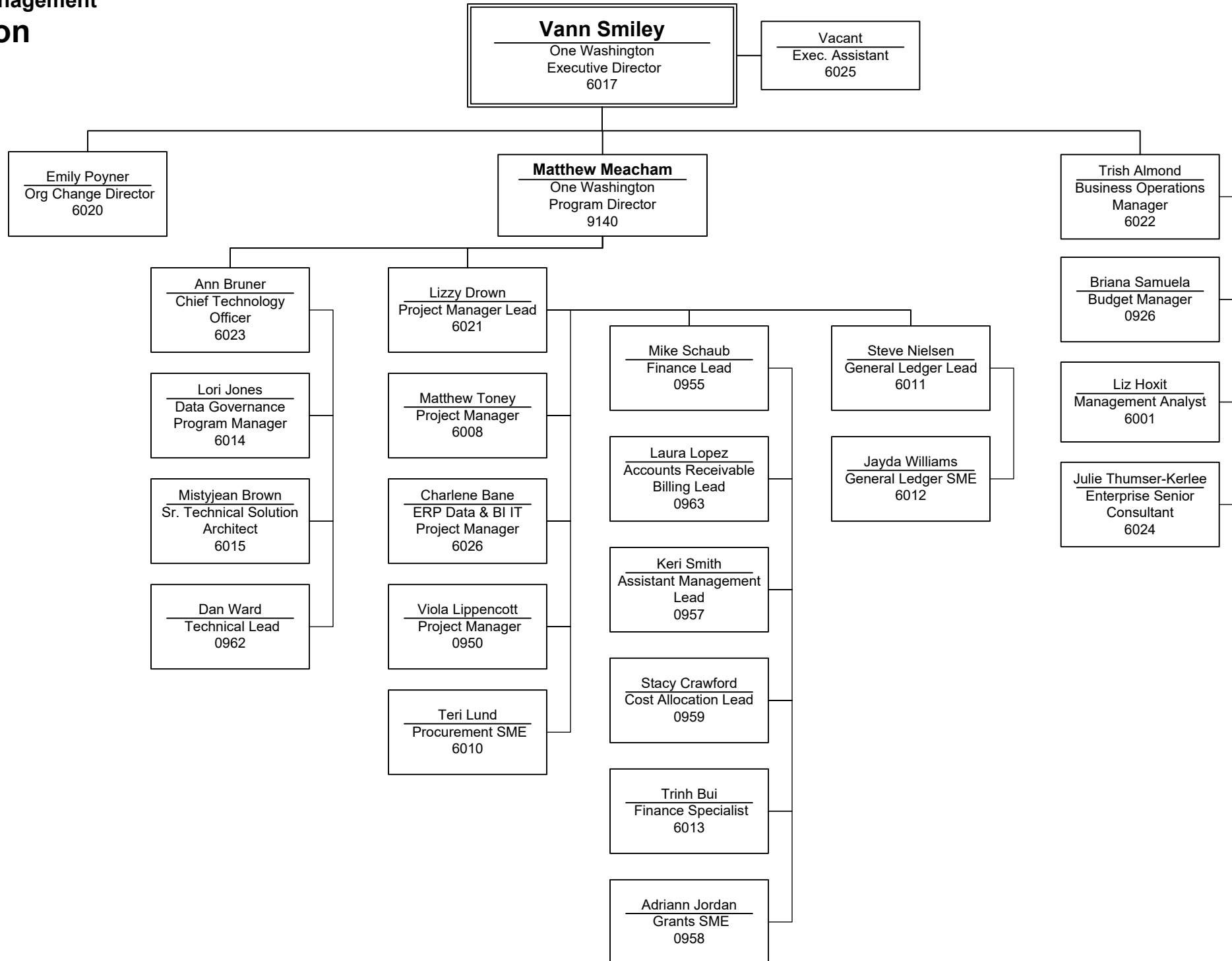
Scott Townsend
Senior Applications
Developer
9651

John Lindberg
Sr. Software
Integration Adm.
9652

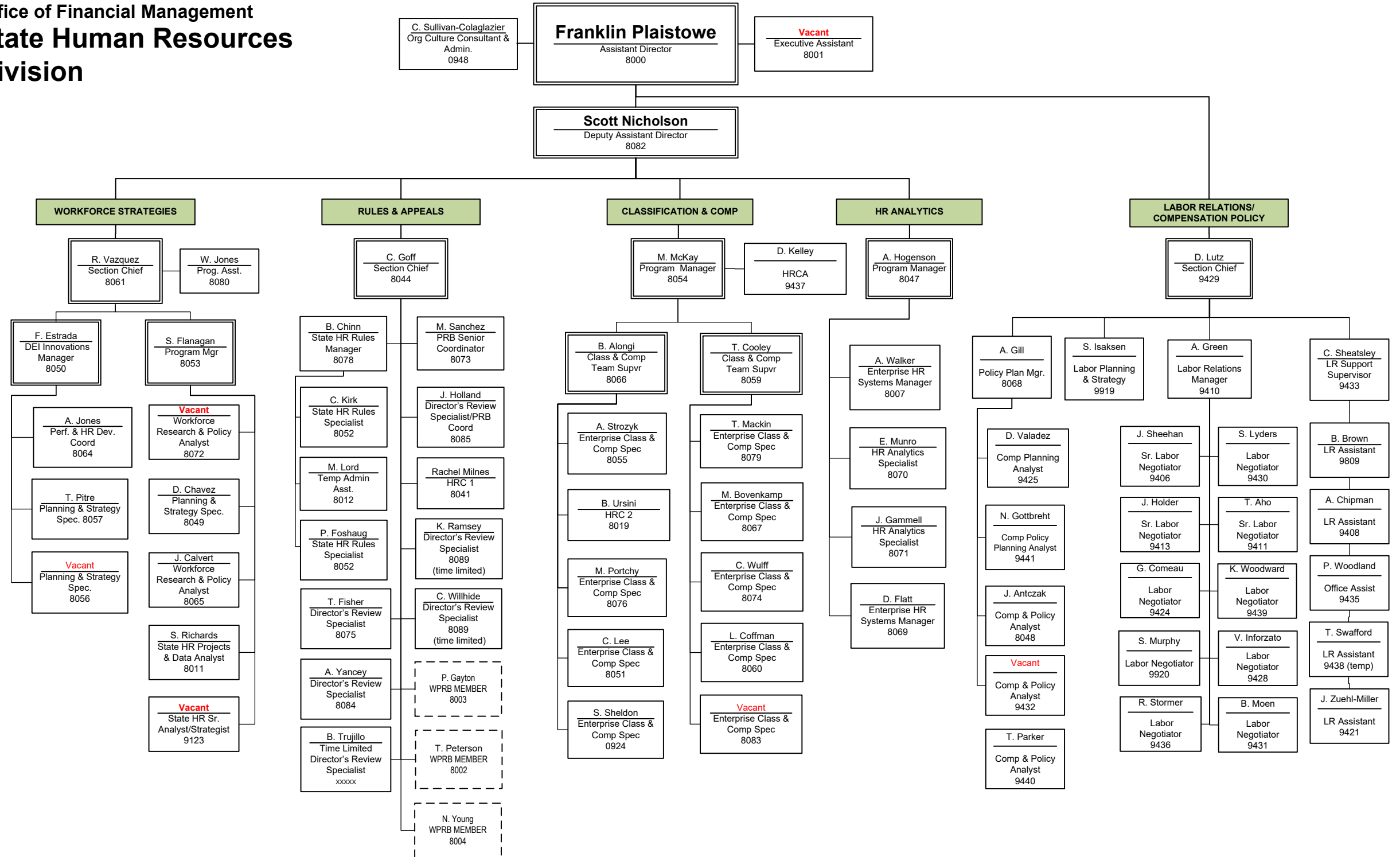
Phong Nguyen
IT Developer
9656

Kevin Barnett
Database Adm
9650

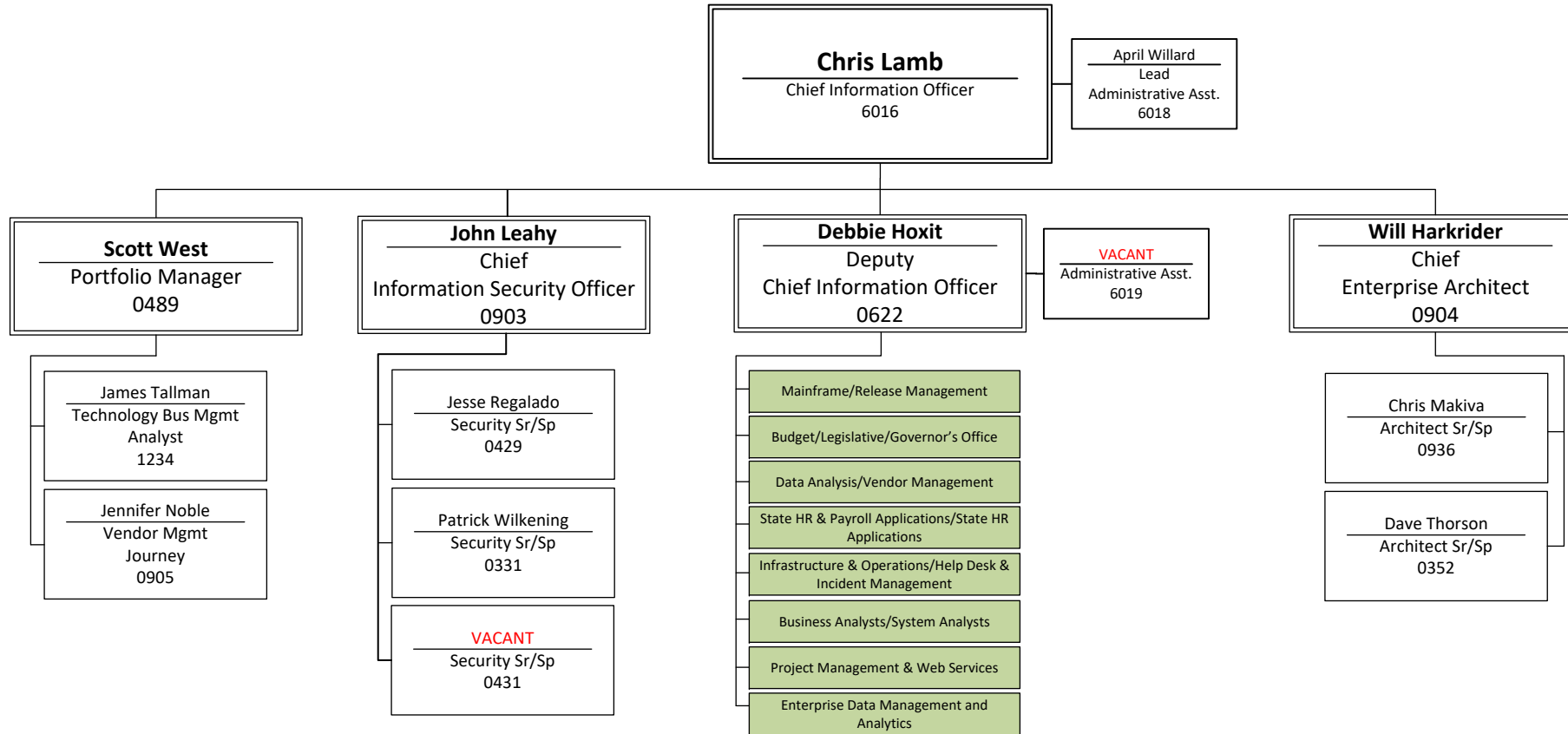
Office of Financial Management
One Washington



Office of Financial Management State Human Resources Division

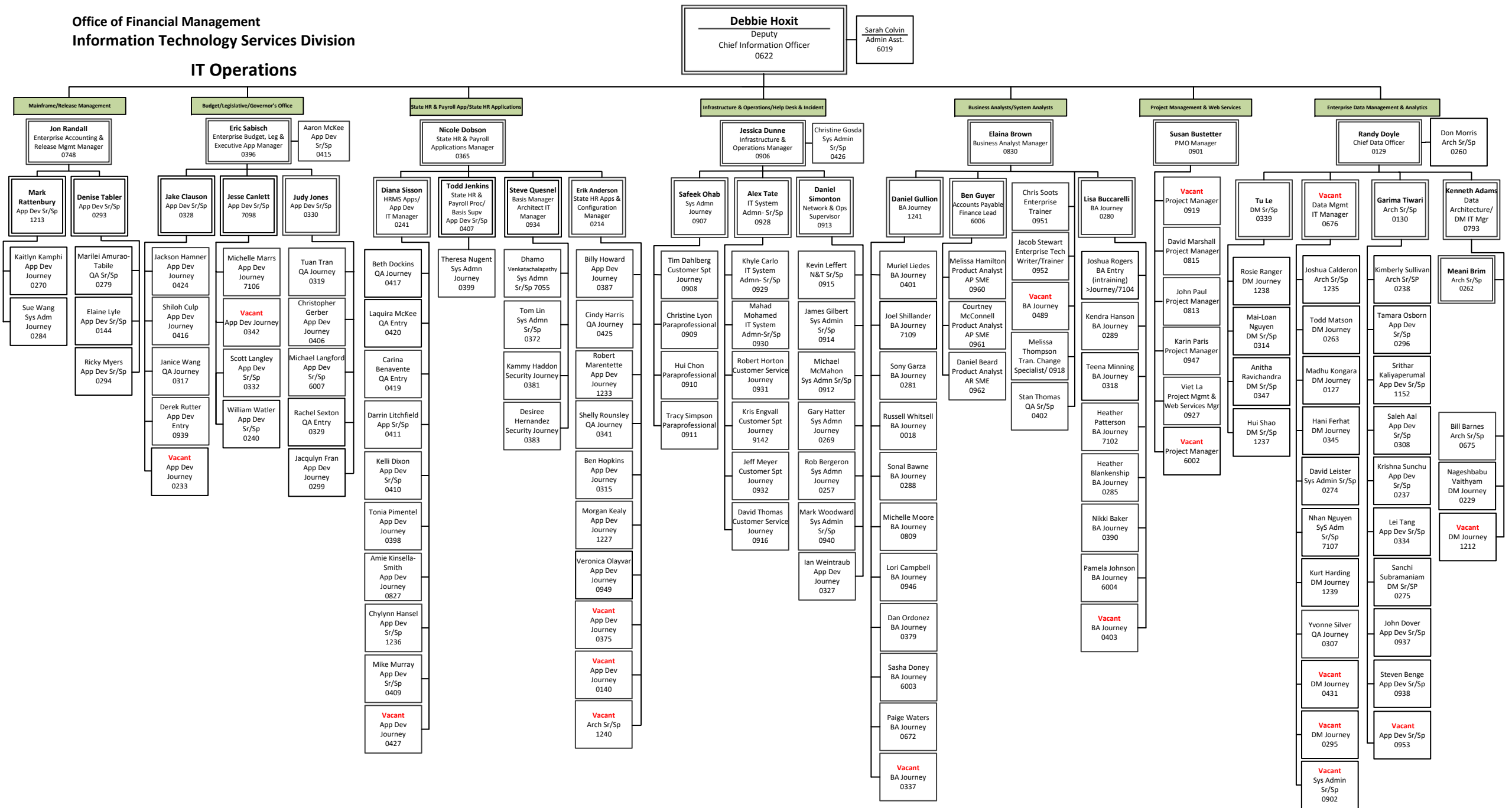


Office of Financial Management
Information Technology Services Division



Office of Financial Management
Information Technology Services Division

IT Operations



Office of Financial Management
 Governor's Special Projects/Offices/Units
 Supported by OFM

Jay Inslee
 Governor

Jamila Thomas
 Chief of Staff

Kelly Wicker
 Deputy Chief of Staff

**Office for Regulatory
 Innovation & Assistance**

Aaron Everett
 Director
 9779

Crystal Ith
 Administrative Asst.
 9116

Shanelle Pierce
 Regulatory Improvement
 Consultant Manager
 9981

Benjamin Rapone
 Regulatory Improvement
 Consultant
 9982

Kelly Craig
 Regulatory Improvement
 Consultant
 9985

Penny Rarick
 Regulatory Improvement
 Consultant
 9984

Scott Hitchcock
 Business Services
 Manager/Legislative
 Liaison
 7010

Michael McNabb
 Solutions Architect
 9782

Sonja Gissberg
 Business Solutions
 Analyst
 9783

Rachael Lindstedt
 Business Solutions
 Analyst
 9784

Sonya Moore
 Business Solutions
 Analyst
 99887

Results Washington

Tammy Firkins
 Gov's Performance
 Audit Liaison
 9924

Christine Bezanson
 Director
 9974

Vacant
 Admin Asst.
 9916

Mandeep Kaundal
 Deputy Director
 9160

John Cooper
 Senior Performance
 & Project Manager

Jessica Dang
 Sr. Performance
 Analyst
 9275

Christine Stalie
 Sr. Performance
 Analyst
 9931

**Geoffrey
 Cunningham**
 Sr. Performance
 Analyst
 9912

Charice Pidcock
 Sr. Performance
 Analyst
 9927

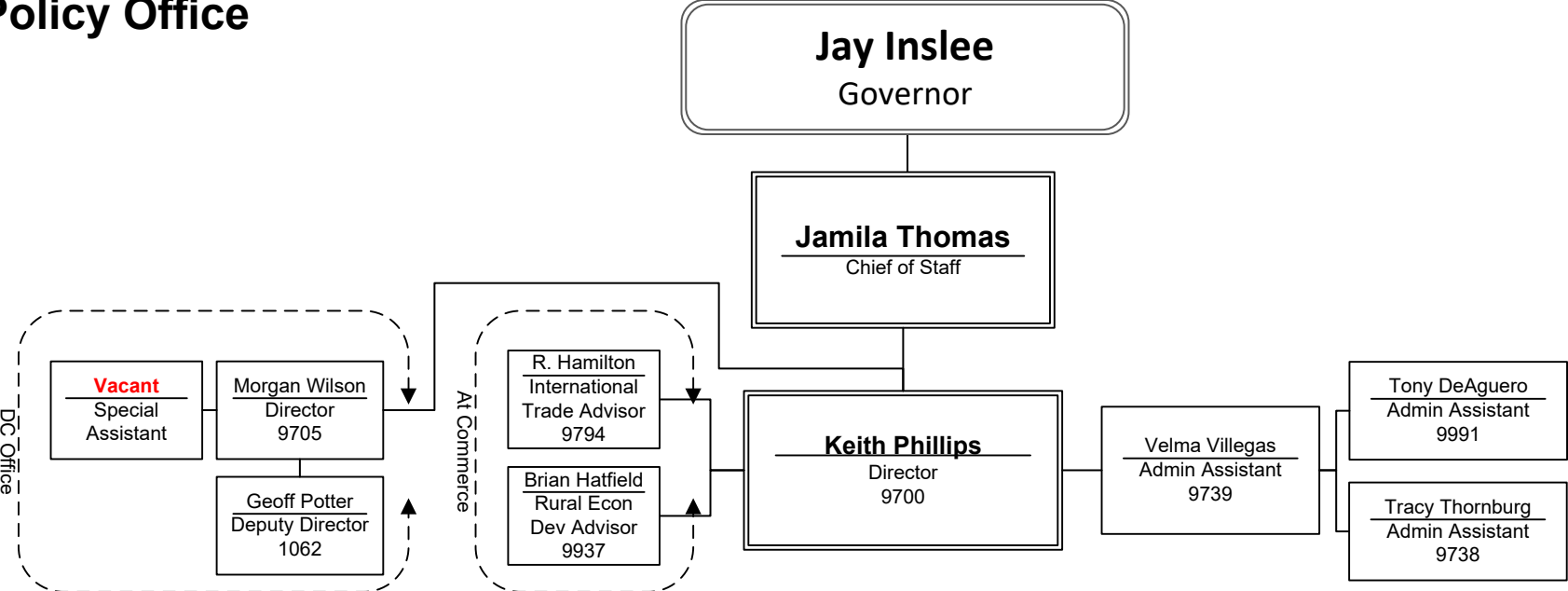
Cathy Holder
 Performance
 Process Analyst
 9925

Alissa Julius
 Performance
 Process Analyst
 9921

Reports to Chief of Staff/Deputy Chief of Staff

Reports to Chief of Staff/Deputy Chief of Staff

Governor's Policy Office



Climate & Energy	Education & Workforce Development	Human Services	Government Ops & Public Safety	General Government	Health	Labor	Natural Resources & Environment	Outdoor Recreation & Economic Development	Transportation & Economic Development
Becky Kelley Senior Policy Advisor 9936	John Aultman Senior Policy Advisor 9701	Sydney Forrester Senior Policy Advisor 9799	Sheri Sawyer Senior Policy Advisor 9785	Sonja Hallum Senior Policy Advisor 9790	Molly Voris Senior Policy Advisor 9994	Caitlyn Jekel Senior Policy Advisor 9792	JT Austin Senior Policy Advisor 9778	Jon Snyder Senior Policy Advisor 9798	Debbie Driver Senior Policy Advisor 9948
Anna Lising Senior Policy Advisor 9713	Maddy Thompson Senior Policy Advisor 9788	RaShelle Davis Senior Policy Advisor 9759			Amber Leaders Senior Policy Advisor 9776		Jennifer Hennessey Senior Policy Advisor 9932		John Flanagan Senior Policy Advisor 9941
Vacant Senior Policy Advisor 9939		Jim Baumgart Senior Policy Advisor Government Ops & Public Safety and Human Services 9706			Lane Warmbrod Pandemic Health Advisor (Intern) 9731				Vacant Senior Policy Advisor 9789

Governor's Offices/Units
Supported by OFM and Governor's Office

Jay Inslee
 Governor

Kelly Wicker
 Deputy Chief of Staff

Office of the Corrections Ombuds

Joanna Carns
 Director
 1080

Patricia David
 Director of Patient Safety & Performance Review
 1096

Matthias Gyde
 Assistant Ombuds – General Complaints
 1084

Caitlin Robertson
 Assistant Ombuds – General Complaints
 1085

Angee Schrader
 Assistant Ombuds – Vulnerable Pop.
 1088

Elisabeth Kingsbury
 Special Projects/ Mental Health
 1093

Carolina Landa
 Early Resolution Mgr.
 1097

EV Webb
 Early Resolution Ombuds
 1092

LaQuesha Turner
 Early Resolution Ombuds.
 1089

Stella Spracklin
 Early Resolution Ombuds
 1087

Jessica Means
 Early Resolution Ombuds
 1086

Office of the Education Ombuds

Carrie Basas
 Director
 9000

Yordanos Gebreamlak
 Senior Education Ombuds
 9001

Stephanie Palmquist
 Media & Database Coordinator
 9008

Danielle Eidenberg-Noppe
 Senior Education Ombuds
 9006

Sean Heans
 Outreach Specialist
 9003

Melody Spidell
 Senior Education Ombuds
 9010

Seema Bahl
 Education Ombuds
 9012

Jinju Park
 Education Ombuds
 9009

Office of the Family and Children Ombuds

Patrick Dowd
 Director
 3000

Mary Moskowitz
 Ombuds
 3002

Sherry Saeteurn
 Spec. Projects/Data Coordinator
 3004

Elizabeth Bokan
 Ombuds
 3007

Melissa Montrose
 Ombuds
 3003

Cristina Limpens
 Senior Ombuds
 3006

Vacant
 Info Ref Spec/Off Admn
 3001

LGBTQ Commission

Manny Sanchez
 Director
 2024

Omar Santana
 Exec. Asst.
 2025

Women's Commission

Regina Malveaux
 Director
 1070

Daniya Baisubanova
 Program Coord.
 1071

DCYF Oversight Board

Crista Johnson
 Director
 1090

Nick Colgan
 Admin Coordinator
 1091

Reports to DCYF Oversight Board