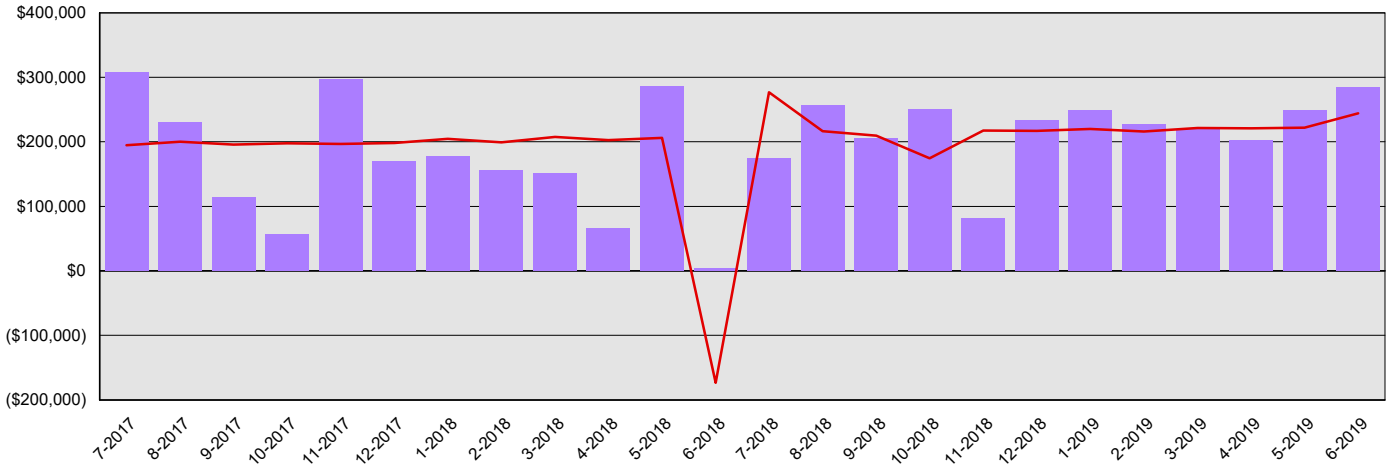


Washington State Health Care Authority Summary Financial Report for 2017-19 Biennium to Date

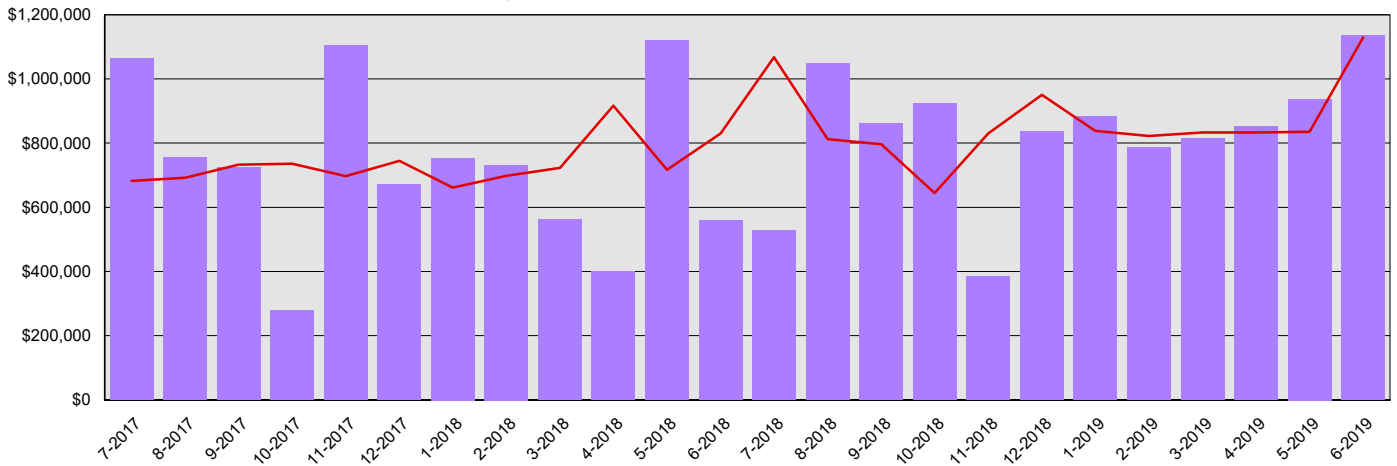
Dollars in Thousands

All Funds Variance to Date	\$513,021 Underexpenditure	2.7% Underexpenditure
-----------------------------------	-----------------------------------	------------------------------

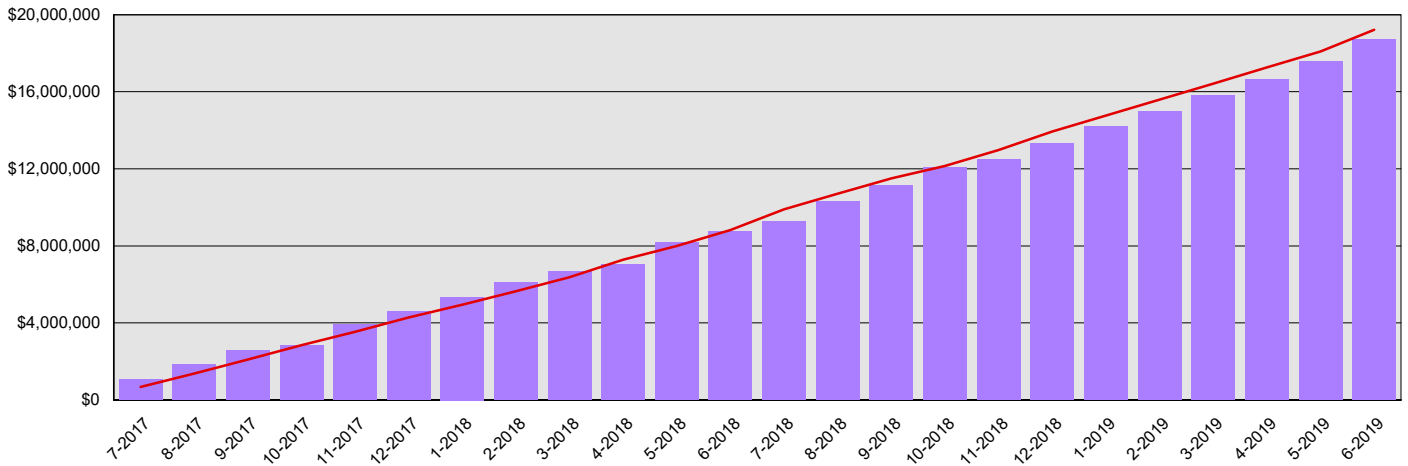
Monthly Planned vs. Actual Expenditures - GFS



Monthly Planned vs. Actual Expenditures - All Funds



Planned vs. Actual Cumulative Expenditures - All Funds



Actuals (Vertical Bars)



Estimates (line)



Washington State Health Care Authority
Summary Financial Report for 2017-19 Biennium to Date

Dollars in Thousands

Program/Fund Expenditure Detail

Expenditures by Program	Estimate¹	Actual	Variance	% Var.
Administration	\$426,104	\$325,713	\$100,391	23.6%
Information Technology	\$217,743	\$172,783	\$44,960	20.6%
Public Employee Benefits Administration	\$161,791	\$157,478	\$4,313	2.7%
School Employees Benefit Board	\$4,509	\$17,043	(\$12,534)	-278.0%
Mental Health	\$956,432	\$944,334	\$12,098	1.3%
Alcohol And Substance Abuse	\$466,468	\$433,378	\$33,090	7.1%
Medical Assistance	\$16,867,934	\$16,551,323	\$316,611	1.9%
Health Benefit Exchange	\$124,112	\$110,022	\$14,090	11.4%
P1 Adsa Managed Care Clearing Program	\$0	\$0	\$0	0.0%
Total	\$19,225,093	\$18,712,074	\$513,019	2.7%

Expenditure by Fund Group	Estimate¹	Actual	Variance	% Var.
General Fund Federal	\$12,781,334	\$12,451,107	\$330,227	2.6%
General Fund Private/Local	\$260,669	\$177,488	\$83,181	31.9%
General Fund State	\$4,685,162	\$4,645,401	\$39,761	0.8%
Other Funds Non-Appropriated	\$544,740	\$529,625	\$15,115	2.8%
Other Funds State	\$953,189	\$908,452	\$44,737	4.7%
Total	\$19,225,094	\$18,712,073	\$513,021	2.7%

FTEs by Program	Estimate¹	Actual	Variance	% Var.
Administration	944.1	912.4	31.7	3.4%
Information Technology	175.2	144.6	30.6	17.5%
Public Employee Benefits Administration	70.0	91.7	(21.7)	-31.0%
School Employees Benefit Board	16.4	33.9	(17.5)	-106.7%
Mental Health	16.8	18.2	(1.4)	-8.3%
Alcohol And Substance Abuse	25.1	17.9	7.2	28.7%
Total	1,247.5	1,218.8	28.9	2.3%

1 Estimates include the OFM Official Allotment plus Unanticipated Receipts

2 Only includes Accounts for the Administering Agency

Negative Variance - Denotes Possible Problem

Washington State Health Care Authority
Summary Financial Report for 2017-19 Biennium to Date

Dollars in Thousands

Revenue Detail

Fund	Estimate ¹	Actual	Variance	% Var.
General Fund	\$13,042,003	\$12,940,950	(\$101,053)	-0.8%
Emergency Medical Services and Trauma Care Systems Trust Account	\$0	\$635	\$635	0.0%
Criminal Justice Treatment Account	\$0	\$3	\$3	0.0%
Flexible Spending Administrative Account	\$1,720	\$1,686	(\$34)	-2.0%
Prescription Drug Consortium Account	\$62	\$0	(\$62)	-100.0%
Hospital Safety Net Assessment Account	\$713,117	\$711,349	(\$1,768)	-0.2%
Basic Health Plan Trust Account	\$2,721	(\$5)	(\$2,726)	-100.2%
Home Visiting Services Account	\$0	\$2,434	\$2,434	0.0%
Health Benefit Exchange Account	\$56,736	\$31,498	(\$25,238)	-44.5%
Medicaid Fraud Penalty Account	\$9,361	\$7,422	(\$1,939)	-20.7%
St Health Care Authority Admin Acct	\$34,329	\$28,037	(\$6,292)	-18.3%
Uniform Dental Plan Benefits Administration Account	\$12,686	\$12,459	(\$227)	-1.8%
Uniform Medical Plan Benefits Administration Account	\$124,992	\$118,298	(\$6,694)	-5.4%
School Employees' Insurance Admin Acct	\$0	\$0	\$0	0.0%
Medical Aid Account	\$0	\$0	\$0	0.0%
Total	\$13,997,727	\$13,854,766	(\$142,961)	-1.0%

Revenue by Fund Group

Fund Group	Estimate ¹	Actual	Variance	% Var.
General Fund Federal	\$12,781,334	\$12,517,439	(\$263,895)	-2.1%
General Fund Private/Local	\$260,669	\$193,594	(\$67,075)	-25.7%
General Fund State	\$0	\$229,918	\$229,918	0.0%
Other Funds State	\$955,724	\$913,816	(\$41,908)	-4.4%
Total	\$13,997,727	\$13,854,767	(\$142,960)	-1.0%

1 Estimates include the OFM Official Allotment plus Unanticipated Receipts

2 Only includes Accounts for the Administering Agency

Negative Variance - Denotes Possible Problem