

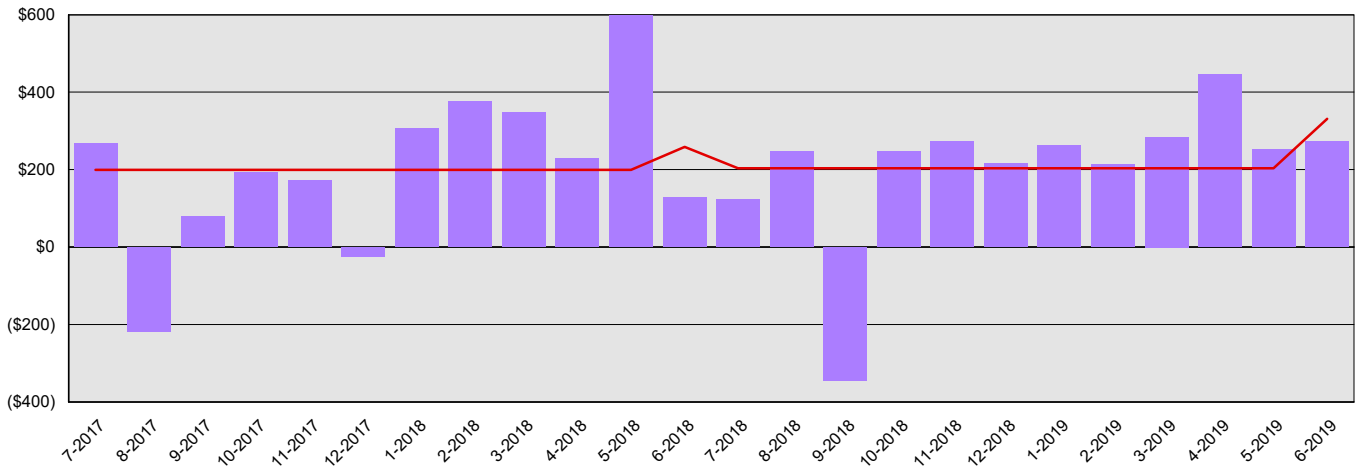
Department of Services for the Blind

Summary Financial Report for 2017-19 Biennium to Date

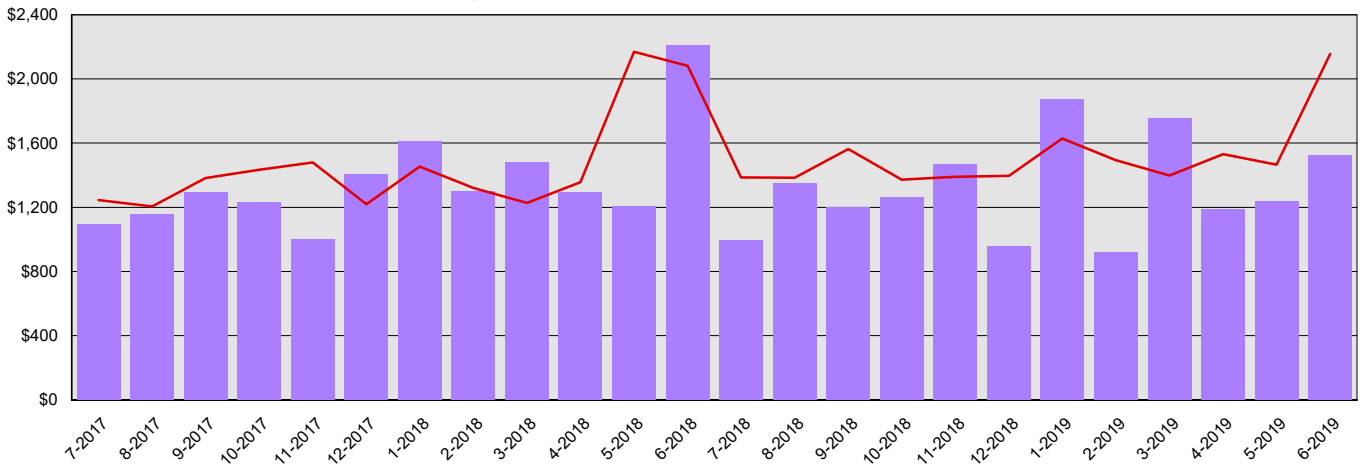
Dollars in Thousands

All Funds Variance to Date	\$3,746 Underexpenditure	10.5% Underexpenditure
----------------------------	--------------------------	------------------------

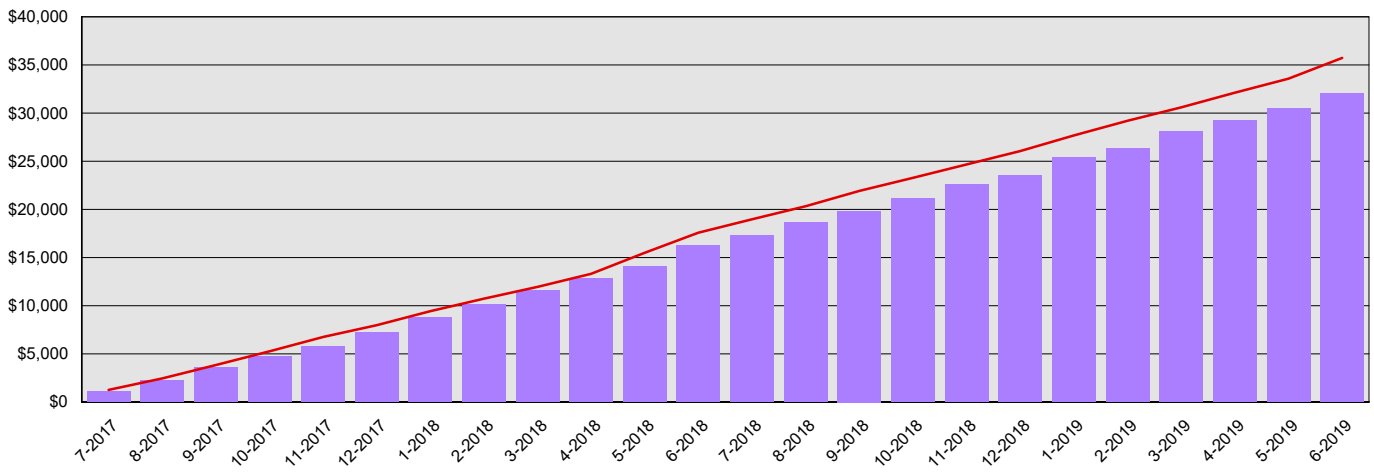
Monthly Planned vs. Actual Expenditures - GFS



Monthly Planned vs. Actual Expenditures - All Funds



Planned vs. Actual Cumulative Expenditures - All Funds



Actuals (Vertical Bars)



Estimates (line)



Department of Services for the Blind
Summary Financial Report for 2017-19 Biennium to Date

Dollars in Thousands

Program/Fund Expenditure Detail

Expenditures by Program	Estimate¹	Actual	Variance	% Var.
Vocational Rehabilitation	\$25,175	\$21,159	\$4,016	16.0%
Agency Administration	\$8,296	\$8,401	(\$105)	-1.3%
Business Enterprises	\$2,267	\$2,432	(\$165)	-7.3%
Total	\$35,738	\$31,992	\$3,746	10.5%

Expenditure by Fund Group	Estimate¹	Actual	Variance	% Var.
General Fund Federal	\$25,274	\$21,724	\$3,550	14.0%
General Fund Private/Local	\$80	\$49	\$31	38.8%
General Fund State	\$5,019	\$4,944	\$75	1.5%
Other Funds Non-Appropriated	\$5,192	\$5,102	\$90	1.7%
Other Funds State	\$173	\$173	\$0	0.0%
Total	\$35,738	\$31,992	\$3,746	10.5%

FTEs by Program	Estimate¹	Actual	Variance	% Var.
Vocational Rehabilitation	63.1	58.4	4.7	7.4%
Agency Administration	13.9	18.9	(5.0)	-36.0%
Business Enterprises	3.0	2.9	0.1	3.3%
Total	80.0	80.1	(0.2)	-0.3%

1 Estimates include the OFM Official Allotment plus Unanticipated Receipts

2 Only includes Accounts for the Administering Agency

Negative Variance - Denotes Possible Problem

Department of Services for the Blind
Summary Financial Report for 2017-19 Biennium to Date

Dollars in Thousands

Fund	Revenue Detail			
	Estimate ¹	Actual	Variance	% Var.
General Fund	\$25,354	\$25,864	\$510	2.0%
Business Enterprises Revolving Account	\$1,986	\$2,487	\$501	25.2%
Total	\$27,340	\$28,351	\$1,011	3.7%

Fund Group	Revenue by Fund Group			
	Estimate ¹	Actual	Variance	% Var.
General Fund Federal	\$25,274	\$25,731	\$457	1.8%
General Fund Private/Local	\$80	\$62	(\$18)	-22.5%
General Fund State	\$0	\$71	\$71	0.0%
Other Funds Federal	\$0	\$94	\$94	0.0%
Other Funds Private/Local	\$0	\$7	\$7	0.0%
Other Funds State	\$1,986	\$2,385	\$399	20.1%
Total	\$27,340	\$28,350	\$1,010	3.7%

1 Estimates include the OFM Official Allotment plus Unanticipated Receipts

2 Only includes Accounts for the Administering Agency

Negative Variance - Denotes Possible Problem