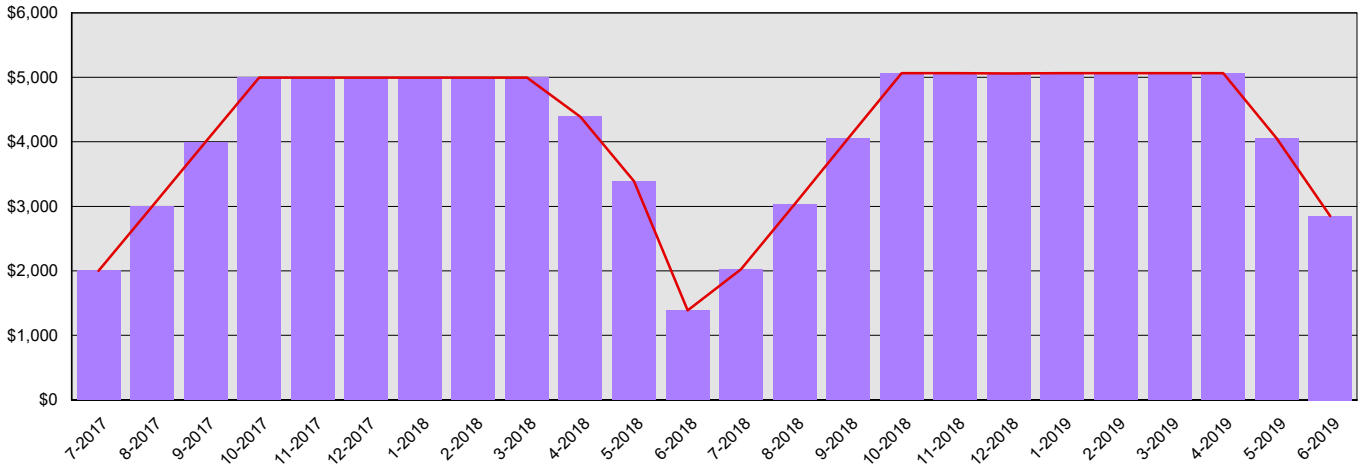


Central Washington University Summary Financial Report for 2017-19 Biennium to Date

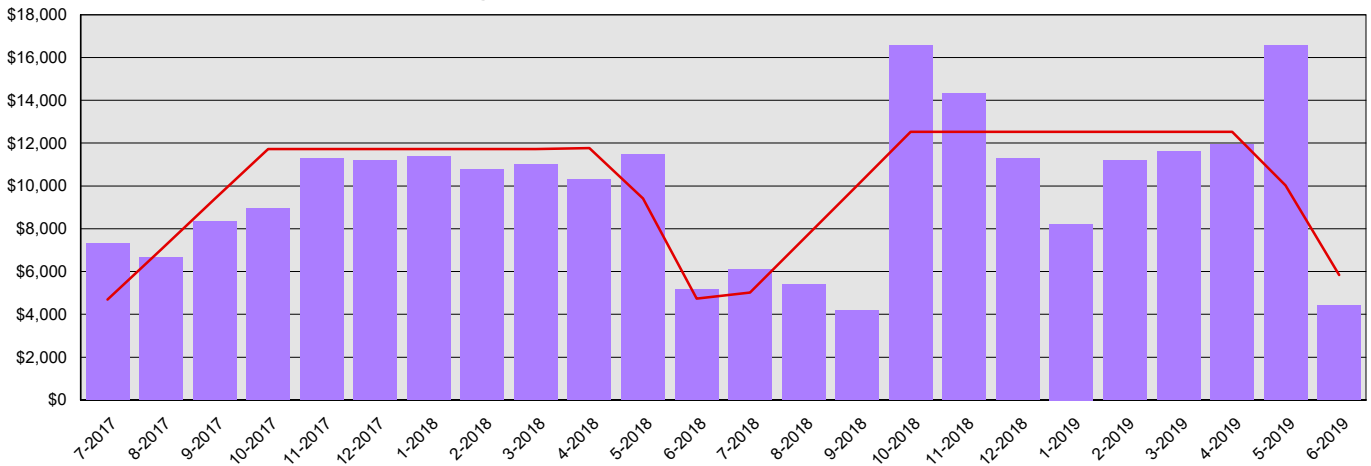
Dollars in Thousands

All Funds Variance to Date	\$7,996 Underexpenditure	3.3% Underexpenditure
----------------------------	--------------------------	-----------------------

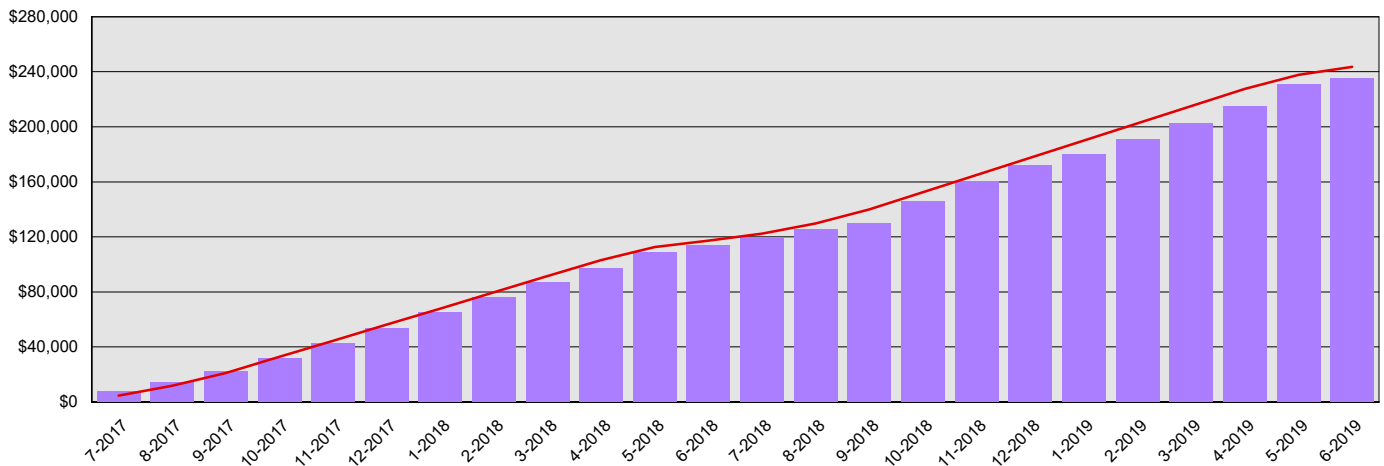
Monthly Planned vs. Actual Expenditures - GFS



Monthly Planned vs. Actual Expenditures - All Funds



Planned vs. Actual Cumulative Expenditures - All Funds



Actuals (Vertical Bars)



Estimates (line)



Central Washington University
Summary Financial Report for 2017-19 Biennium to Date

Dollars in Thousands

Program/Fund Expenditure Detail

Expenditures by Program	Estimate ¹	Actual	Variance	% Var.
Instruction	\$155,306	\$126,125	\$29,181	18.8%
Research	\$302	\$227	\$75	24.8%
Primary Support	\$12,990	\$18,702	(\$5,712)	-44.0%
Library	\$7,250	\$9,048	(\$1,798)	-24.8%
Student Services	\$12,084	\$16,024	(\$3,940)	-32.6%
Institutional Support	\$36,251	\$41,787	(\$5,536)	-15.3%
Plant Operations and Maintenance	\$19,334	\$23,609	(\$4,275)	-22.1%
Total	\$243,517	\$235,522	\$7,995	3.3%

Expenditure by Fund Group	Estimate ¹	Actual	Variance	% Var.
General Fund State	\$99,607	\$99,607	\$0	0.0%
Other Funds Non-Appropriated	\$120,838	\$111,535	\$9,303	7.7%
Other Funds State	\$23,073	\$24,380	(\$1,307)	-5.7%
Total	\$243,518	\$235,522	\$7,996	3.3%

FTEs by Program	Estimate ¹	Actual	Variance	% Var.
Instruction	983.8	720.7	263.1	26.7%
Research	1.9	0.9	1.0	52.6%
Primary Support	83.0	78.2	4.8	5.8%
Library	46.3	40.9	5.4	11.7%
Student Services	77.2	85.3	(8.1)	-10.5%
Institutional Support	231.5	192.8	38.7	16.7%
Plant Operations and Maintenance	123.5	133.5	(10.0)	-8.1%
Total	1,547.2	1,252.3	294.9	19.1%

1 Estimates include the OFM Official Allotment plus Unanticipated Receipts

2 Only includes Accounts for the Administering Agency

Negative Variance - Denotes Possible Problem

Central Washington University
Summary Financial Report for 2017-19 Biennium to Date

Dollars in Thousands

		Revenue Detail			
Fund	Estimate¹	Actual	Variance	% Var.	
Central Washington University Capital Projects Account	\$5,358	\$5,182	(\$176)	-3.3%	
Inst of HI ED-Operating Fees Acct	\$120,838	\$113,469	(\$7,369)	-6.1%	
CWU Operating Fees Account	\$878	\$877	(\$1)	-0.1%	
Total	\$127,074	\$119,528	(\$7,546)	-5.9%	

		Revenue by Fund Group			
Fund Group	Estimate¹	Actual	Variance	% Var.	
Other Funds State	\$127,074	\$119,528	(\$7,546)	-5.9%	
Total	\$127,074	\$119,528	(\$7,546)	-5.9%	

1 Estimates include the OFM Official Allotment plus Unanticipated Receipts

2 Only includes Accounts for the Administering Agency

Negative Variance - Denotes Possible Problem