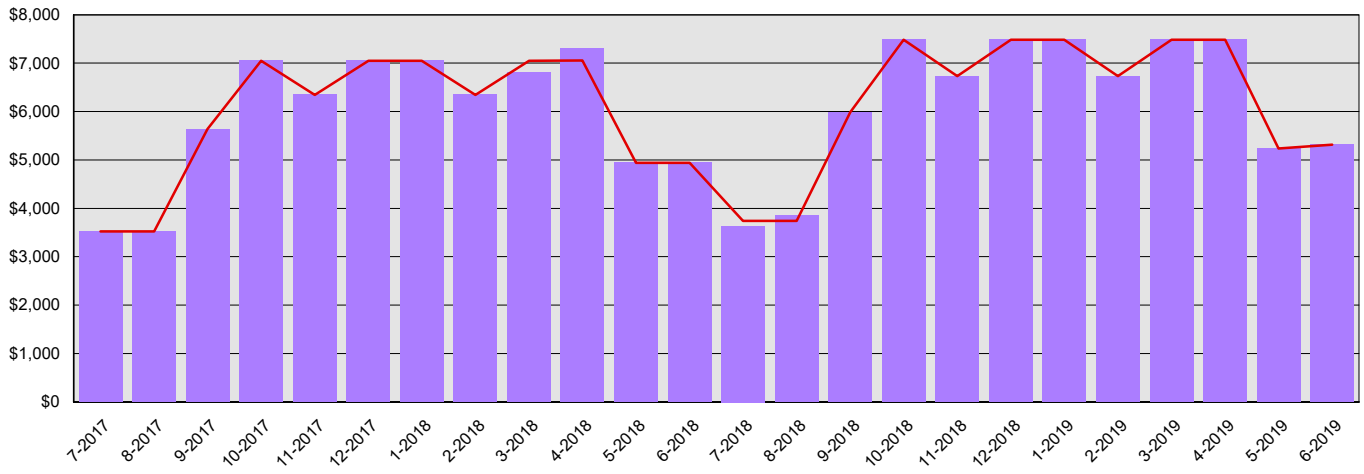


Western Washington University Summary Financial Report for 2017-19 Biennium to Date

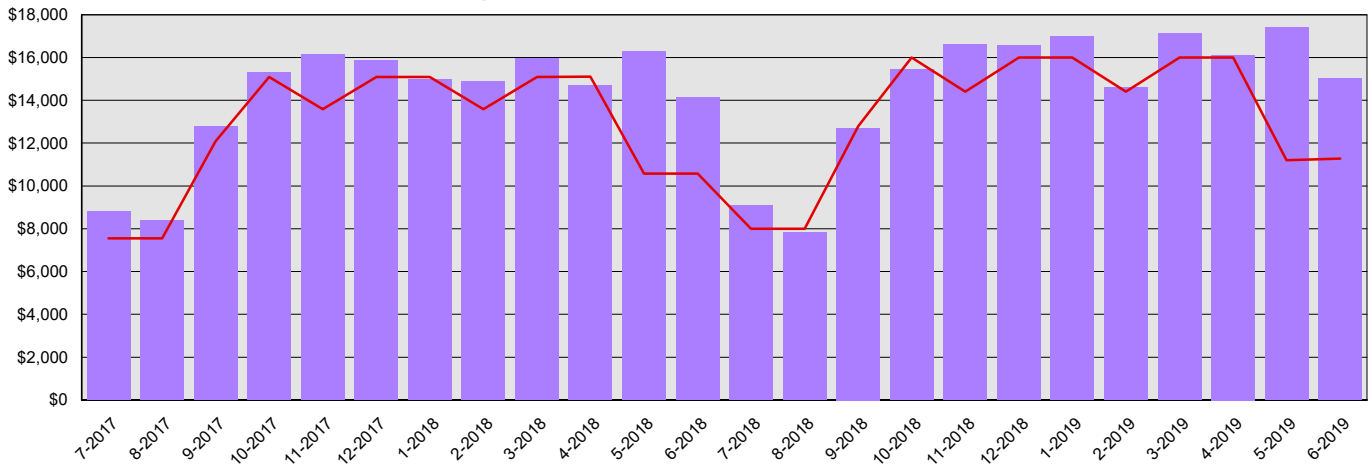
Dollars in Thousands

All Funds Variance to Date	\$32,562 Overexpenditure	10.5% Overexpenditure
-----------------------------------	---------------------------------	------------------------------

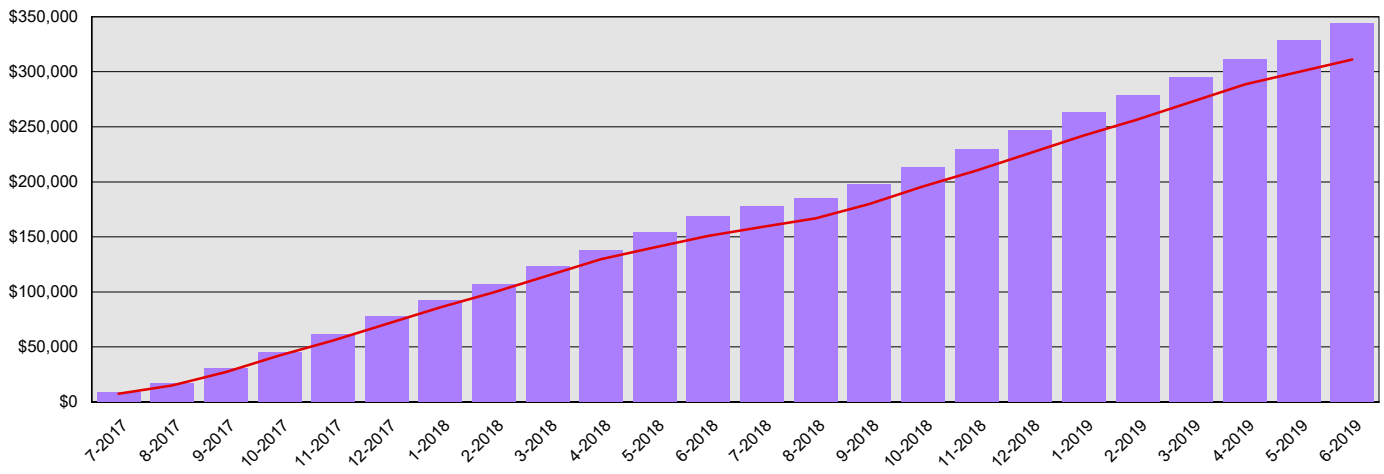
Monthly Planned vs. Actual Expenditures - GFS



Monthly Planned vs. Actual Expenditures - All Funds



Planned vs. Actual Cumulative Expenditures - All Funds



Actuals (Vertical Bars)



Estimates (line)



Western Washington University
Summary Financial Report for 2017-19 Biennium to Date

Dollars in Thousands

Program/Fund Expenditure Detail

Expenditures by Program	Estimate ¹	Actual	Variance	% Var.
Instruction	\$174,237	\$202,950	(\$28,713)	-16.5%
Research	\$3,052	\$1,713	\$1,339	43.9%
Primary Support	\$15,258	\$13,801	\$1,457	9.5%
Library	\$15,258	\$15,139	\$119	0.8%
Student Services	\$25,451	\$25,855	(\$404)	-1.6%
Institutional Support	\$44,289	\$51,056	(\$6,767)	-15.3%
Plant Operations and Maintenance	\$33,567	\$33,156	\$411	1.2%
Sponsored Research and Programs	\$0	\$2	(\$2)	0.0%
Total	\$311,112	\$343,672	(\$32,560)	-10.5%

Expenditure by Fund Group	Estimate ¹	Actual	Variance	% Var.
General Fund State	\$145,377	\$145,377	\$0	0.0%
Other Funds Non-Appropriated	\$150,419	\$183,233	(\$32,814)	-21.8%
Other Funds State	\$15,314	\$15,062	\$252	1.6%
Total	\$311,110	\$343,672	(\$32,562)	-10.5%

FTEs by Program	Estimate ¹	Actual	Variance	% Var.
Instruction	998.4	849.0	149.4	15.0%
Research	11.0	8.4	2.6	23.6%
Primary Support	65.6	61.6	4.0	6.1%
Library	65.8	58.0	7.8	11.9%
Student Services	152.9	153.2	(0.3)	-0.2%
Institutional Support	210.3	203.8	6.5	3.1%
Plant Operations and Maintenance	265.4	56.3	209.1	78.8%
Total	1,769.4	1,390.4	379.1	21.4%

1 Estimates include the OFM Official Allotment plus Unanticipated Receipts

2 Only includes Accounts for the Administering Agency

Negative Variance - Denotes Possible Problem

Western Washington University
Summary Financial Report for 2017-19 Biennium to Date

Dollars in Thousands

		Revenue Detail			
Fund		Estimate¹	Actual	Variance	% Var.
Western Washington University Capital Projects Account		\$17,102	\$8,492	(\$8,610)	-50.3%
Inst of HI ED-Operating Fees Acct		\$150,419	\$172,333	\$21,914	14.6%
	Total	\$167,521	\$180,825	\$13,304	7.9%
 Revenue by Fund Group					
Fund Group		Estimate¹	Actual	Variance	% Var.
Other Funds State		\$167,521	\$180,826	\$13,305	7.9%
	Total	\$167,521	\$180,826	\$13,305	7.9%

1 Estimates include the OFM Official Allotment plus Unanticipated Receipts

2 Only includes Accounts for the Administering Agency

Negative Variance - Denotes Possible Problem