

# Eastern Washington State Historical Society Summary Financial Report for 2019-21 Biennium to Date

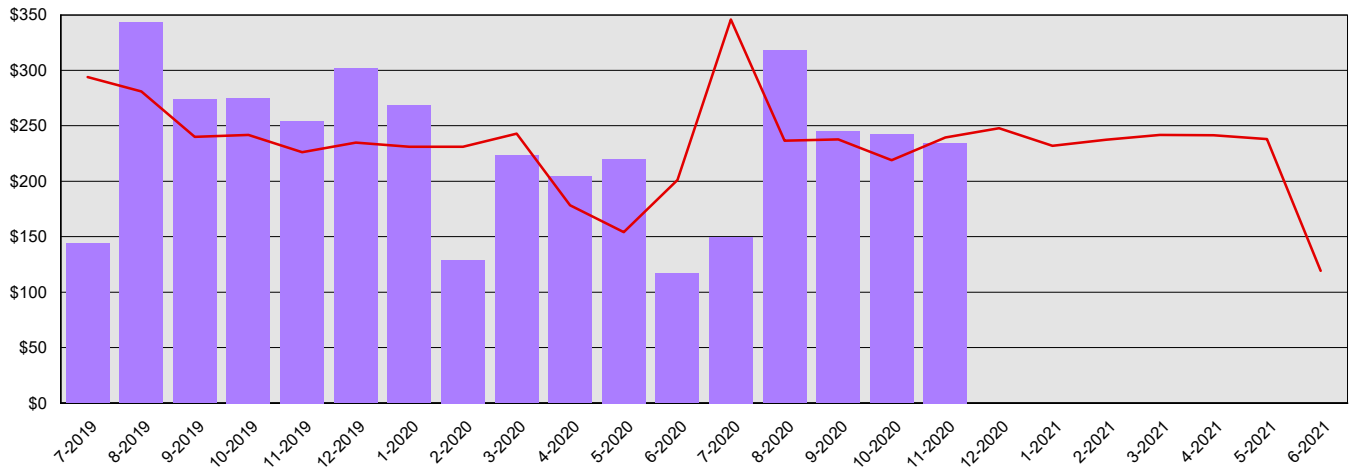
Dollars in Thousands

All Funds Variance to Date

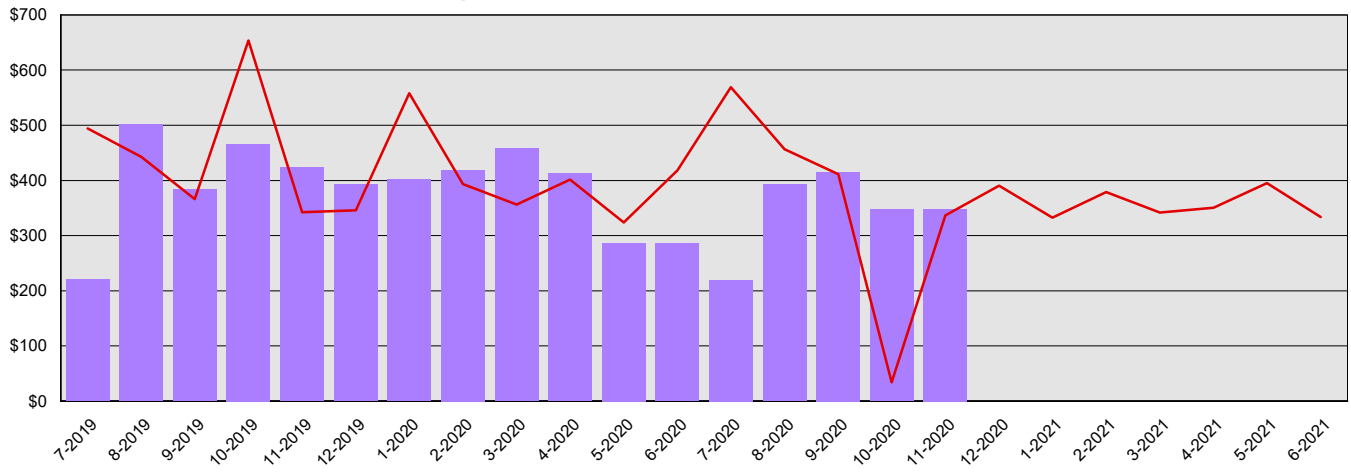
\$529 Underexpenditure

7.7% Underexpenditure

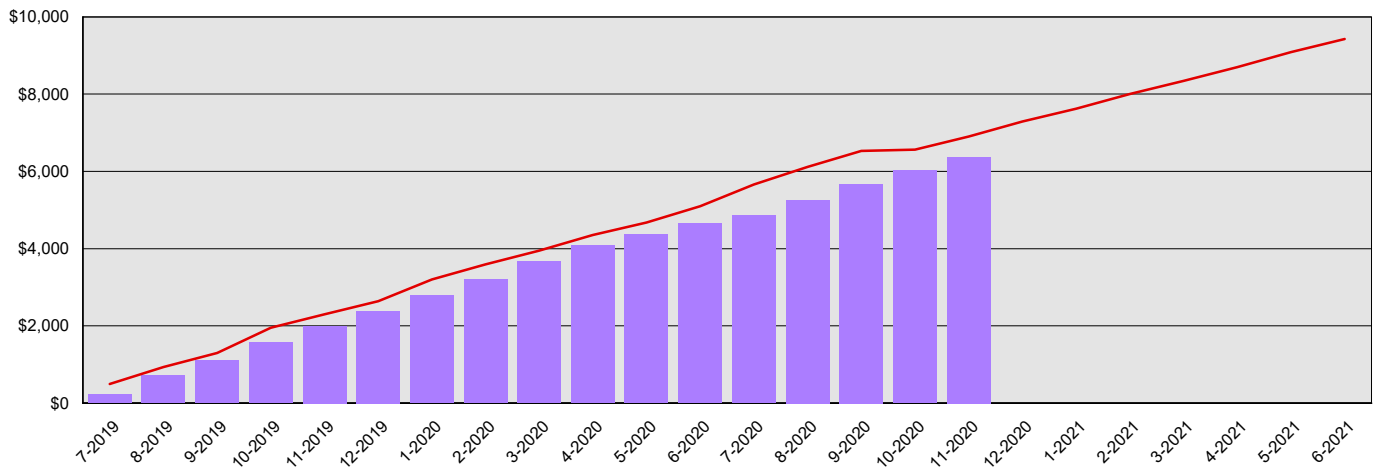
Monthly Planned vs. Actual Expenditures - GFS



Monthly Planned vs. Actual Expenditures - All Funds



Planned vs. Actual Cumulative Expenditures - All Funds



Actuals (Vertical Bars)



Estimates (line)



1/5/2021

Eastern Washington State Historical Society  
Summary Financial Report for 2019-21 Biennium to Date

Dollars in Thousands

**Program/Fund Expenditure Detail**

| <b>Expenditures by Program</b>         |  | <b>Estimate<sup>1</sup></b> | <b>Actual</b>  | <b>Variance</b> | <b>% Var.</b> |
|--|--|-----------------------------|----------------|-----------------|---------------|
| Historical Records and Museum Services |  | \$6,902                     | \$6,373        | \$529           | 7.7%          |
| <b>Total</b>                           |  | <b>\$6,902</b>              | <b>\$6,373</b> | <b>\$529</b>    | <b>7.7%</b>   |
| <b>Expenditure by Fund Group</b>       |  | <b>Estimate<sup>1</sup></b> | <b>Actual</b>  | <b>Variance</b> | <b>% Var.</b> |
| General Fund State                     |  | \$4,035                     | \$3,943        | \$92            | 2.3%          |
| Other Funds Non-Appropriated           |  | \$2,760                     | \$2,323        | \$437           | 15.8%         |
| Other Funds State                      |  | \$107                       | \$107          | \$0             | 0.0%          |
| <b>Total</b>                           |  | <b>\$6,902</b>              | <b>\$6,373</b> | <b>\$529</b>    | <b>7.7%</b>   |
| <b>FTEs by Program</b>                 |  | <b>Estimate<sup>1</sup></b> | <b>Actual</b>  | <b>Variance</b> | <b>% Var.</b> |
| Historical Records and Museum Services |  | 32.0                        | 26.7           | 5.3             | 16.6%         |
| <b>Total</b>                           |  | <b>32.0</b>                 | <b>26.7</b>    | <b>5.3</b>      | <b>16.6%</b>  |

<sup>1</sup> Estimates include the OFM Official Allotment plus Unanticipated Receipts

<sup>2</sup> Only includes Accounts for the Administering Agency

Negative Variance - Denotes Possible Problem

**Eastern Washington State Historical Society**  
**Summary Financial Report for 2019-21 Biennium to Date**

Dollars in Thousands

| Fund   | Revenue Detail        |                |                |              |
|--|-----------------------|----------------|----------------|--------------|
|  | Estimate <sup>1</sup> | Actual         | Variance       | % Var.       |
| General Fund   | \$0                   | \$0            | \$0            | 0.0%         |
| Industrial Insurance Premium Refund Account                        | \$0                   | \$16           | \$16           | 0.0%         |
| Local Museum Account - Eastern Washington State Historical Society | \$2,974               | \$2,672        | (\$302)        | -10.2%       |
| <b>Total</b>   | <b>\$2,974</b>        | <b>\$2,688</b> | <b>(\$286)</b> | <b>-9.6%</b> |

| Fund Group                | Revenue by Fund Group |                |                |              |
|---------------------------|-----------------------|----------------|----------------|--------------|
|                           | Estimate <sup>1</sup> | Actual         | Variance       | % Var.       |
| General Fund State        | \$0                   | \$0            | \$0            | 0.0%         |
| Other Funds Private/Local | \$1,352               | \$1,635        | \$283          | 20.9%        |
| Other Funds State         | \$1,622               | \$1,052        | (\$570)        | -35.1%       |
| <b>Total</b>              | <b>\$2,974</b>        | <b>\$2,687</b> | <b>(\$287)</b> | <b>-9.7%</b> |

1 Estimates include the OFM Official Allotment plus Unanticipated Receipts

2 Only includes Accounts for the Administering Agency

Negative Variance - Denotes Possible Problem