



June 9th, 2022

Rate Day 2022

OFM

OFFICE OF FINANCIAL MANAGEMENT

Agenda

Time	Agenda Item
2:00-2:10	Welcome by the Office of Financial Management
2:10-2:20	Office of Administrative Hearings
2:20-2:30	Secretary of State
2:30-2:45	Consolidated Technology Services (WaTech)
2:45-3:00	State Auditor
3:00-3:10	Break
3:10-3:30	Attorney General
3:30-3:45	Office of Financial Management
3:45-4:00	Labor and Industries
4:00-4:20	Department of Enterprise Services
4:20-4:30	Additional time for agency questions

Privacy Statement

The law requires consent prior to recording a person's participation in an event. Your participation in this video conference equals consent to be recorded, as required by law. If you do not consent to being recorded but choose to participate, please turn your camera off and use the chat feature to interact with the other participants.

Housekeeping

- All presentations and materials will be available on the OFM website on the 'Budget Related Information' page.
- Please raise your virtual hand if you have a question.
- Please keep your cameras and microphones off until called on to ask a question. (Even though we'd love to see all of your faces!)
- Please complete engagement survey afterwards to be entered into a raffle for homemade cookies from Cheri Keller. (Flavor and dietary restrictions are part of the questions!)

What are Central Services?

- Services that one agency provides to many agencies
 - These services are provided for a cost
 - For example:
 - Audits
 - Legal Services
 - IT infrastructure
 - Vehicle purchases
 - Mail delivery
- Services are either invoiced as an Allocation or a Fee for Service;
 - Allocation | Fixed total cost divided by agency usage
 - Fee for Service | Based on agencies usage

The Central Services Model

- A budgeting tool used to estimate impact to agencies
- Data elements
 - Allocation split – % for who's using the service
 - Provided by the central service provider or statewide data from OFM (FTE count, etc.)
 - Fund split – how agencies pay for services
 - Provided by each agency during biennial budget submission

The Central Services Model

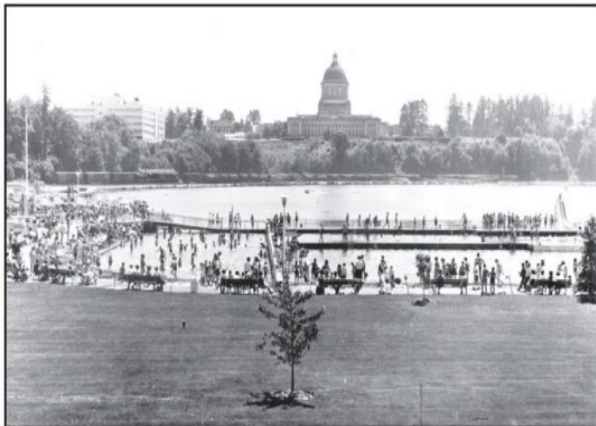
Example: Proposal to turn Capital Lake into Chocolate Lake.

Questions

How much will it cost?

Who will pay for it?

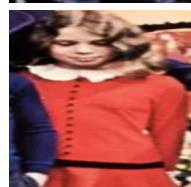
In which funds will they pay for it?



Swimming at Capitol Lake Park, c. 1964.



The Central Services Model



Name (Agency)	Usage (Allocation %)	Currency (Fund Split)	Cost (100)
Augustus	75%	Euros	€75
Mike	2%	US Dollars	\$2
Violet	5%	British Pounds	£5
Charlie	10%	Kindness	♥10
Veruca	8%	British Pounds	£8

The Central Services Model

Example: Proposal to turn Capital Lake into Chocolate Lake.

Questions	Answer	Where is this data point from?
How much will it cost?	\$100	Varying compilations between agency, OFM, and Legislature
Who will pay for it?	The five contestants	Allocation percentage determined by the service provider methodology
In which funds will they pay for it?	Money of country	Fund split provided by the agency

The Central Services Model

Allocation examples

- DES | Campus rent
- OFM | ERP Financing (One Washington)
- WaTech | Enterprise System Rates
- DES | Real Estate Services (Lease renewals)

Fee for Service

- Office of Administrative Hearing
- Office of the Attorney General
- Office of the State Auditor
- Office of Secretary of State

How can I control my costs?

- Ensure accurate FTE count
 - Check HRMS (Human Resource Management System)
- Use centralized service
- Establish business processes



FOR MORE INFORMATION:

Tyler Lentz

360.790.0055

Tyler.Lentz@ofm.wa.gov

ofm.wa.gov



OFM

OFFICE OF FINANCIAL MANAGEMENT