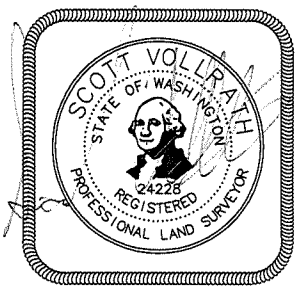


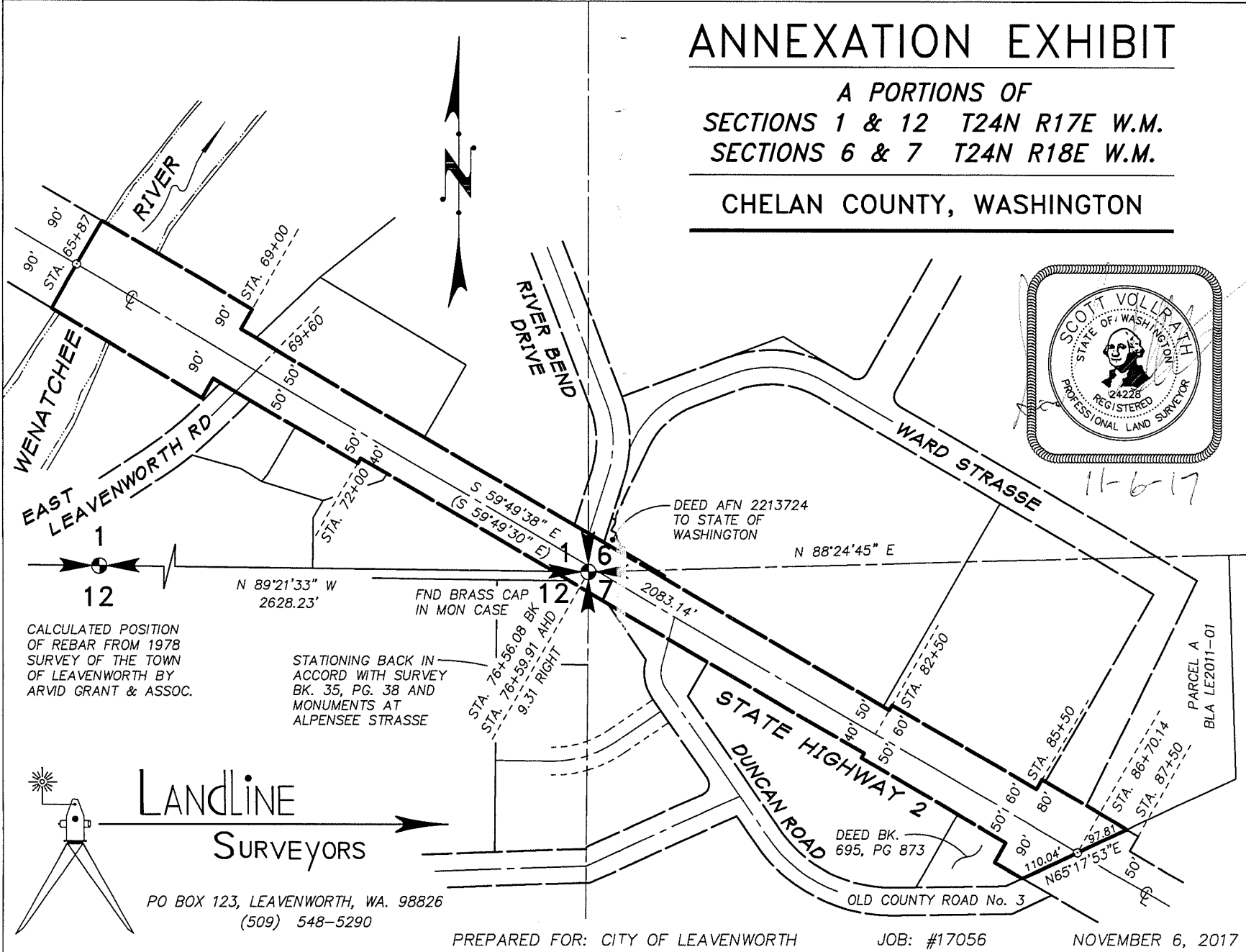
# ANNEXATION EXHIBIT

A PORTIONS OF  
SECTIONS 1 & 12 T24N R17E W.M.  
SECTIONS 6 & 7 T24N R18E W.M.

CHELAN COUNTY, WASHINGTON

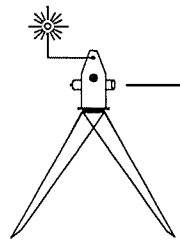


11-6-17



CALCULATED POSITION OF REBAR FROM 1978 SURVEY OF THE TOWN OF LEAVENWORTH BY ARVID GRANT & ASSOC.

STATIONING BACK IN ACCORD WITH SURVEY BK. 35, PG. 38 AND MONUMENTS AT ALPANSEE STRASSE



LANDLINE SURVEYORS

PO BOX 123, LEAVENWORTH, WA. 98826  
(509) 548-5290