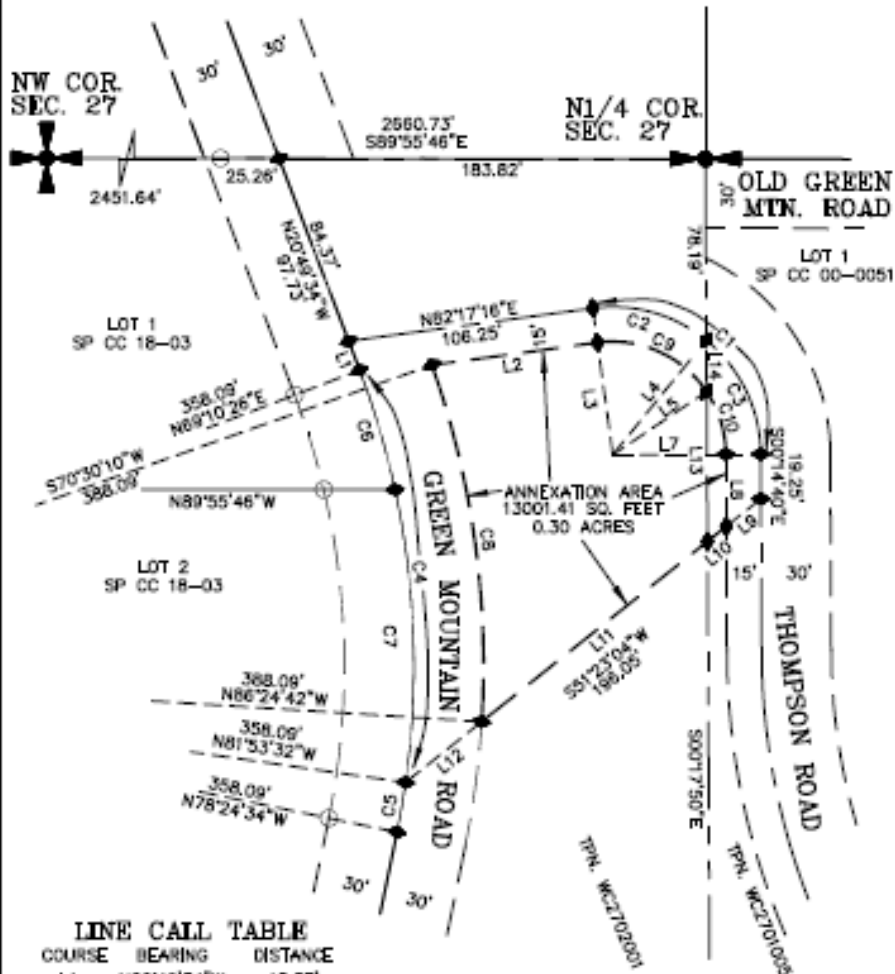
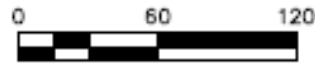


EXHIBIT MAP FOR THE CITY OF KALAMA
 PART OF THE NW1/4 NE1/4, AND NE1/4 NW1/4
 SEC. 27, T.6N., R.1W., W.M.
 COWLITZ COUNTY, WA.



LINE CALL TABLE

COURSE	BEARING	DISTANCE
L1	N20°49'34"W	13.37'
L2	N82°17'16"E	72.06'
L3	S07°42'44"E	RADIAL LINE
L4	N39°14'51"E	RADIAL LINE
L5	N56°02'25"E	RADIAL LINE
L7	N89°45'20"E	RADIAL LINE
L8	S00°14'40"E	31.12'
L9	S51°23'04"W	19.13'
L10	S51°23'04"W	10.40'
L11	S51°23'04"W	124.52'
L12	S51°23'04"W	42.00'
L13	N00°17'50"W	64.67'
L14	N00°17'50"W	22.15'

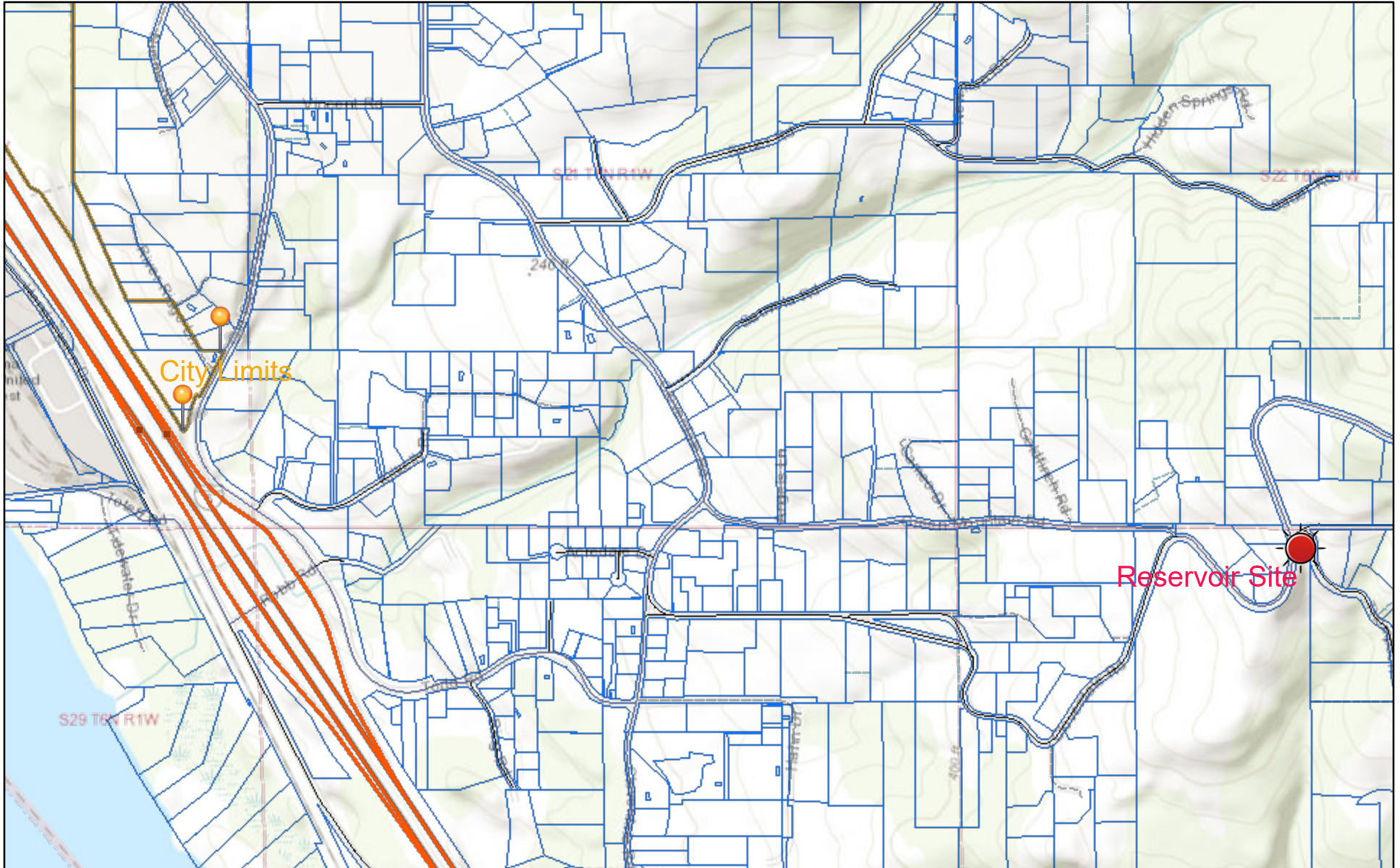
CURVE TABLE

CURVE	RADIUS	LENGTH	DELTA
C1	63.82'	108.56'	97°28'04"
C2	63.82'	52.30'	46°57'35"
C3	63.82'	56.26'	50°30'29"
C4	358.09'	180.83'	28°56'02"
C5	358.09'	21.77'	3°28'58"
C6	358.09'	53.80'	8°36'28"
C7	358.09'	127.03'	20°19'34"
C8	388.09'	158.37'	23°05'08"
C9	48.82'	54.32'	63°45'09"
C10	48.82'	28.73'	33°42'55"

Bluhm & Associates
 Land Surveyors, Inc.
 1088 S. MARKET BLVD.
 CHEHALIS, WA 98532
 PHONE (360) 748-1551
 FAX (360) 748-6282
 E-MAIL: kbluhm@surveyservices.com

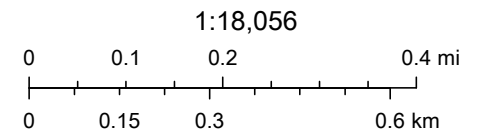
DRAWN BY: JF	DATE: 1-13-21	JOB# 19-130 COMP
CHECKED BY:	SCALE: 1" = 60'	SHEET 1 OF 1

Grn Mtn Reservoir Annexation - Vicinity Map



10/19/2020, 10:08:24 AM

- | | | |
|-----------------|----------------------------|-----------------------------|
| TaxParcels | 2 RURAL PRINCIPAL ARTERIAL | 8 RURAL MINOR COLLECTOR |
| City Limits | 6 RURAL MINOR ARTERIAL | 9 RURAL LOCAL ACCESS |
| 1 INTERSTATE | 7 RURAL MAJOR COLLECTOR | 12 PRINCIPAL ARTERIAL (HWY) |
| 0 RURAL PRIVATE | | |



Cowlitz County GIS Department., Sources: Esri, HERE, Garmin, Intermap,

Cowlitz County
Copyright Cowlitz County. See terms of use.