

PLS

ENGINEERING

Engineering - Surveying - Planning  
 604 W. Evergreen Blvd., Vancouver, WA 98660  
 PH: (360) 944-6519 Fax: (360) 944-6539

## EXHIBIT " "

FOR PARCEL ANNEXATION  
 LOCATED IN THE WEST HALF OF THE  
 NORTHEAST 1/4 OF SECTION 2  
 T. 4 N., R. 1 E., W.M.  
 CLARK COUNTY, WASHINGTON

SCALE: N.T.S.

JOB NO. 3094

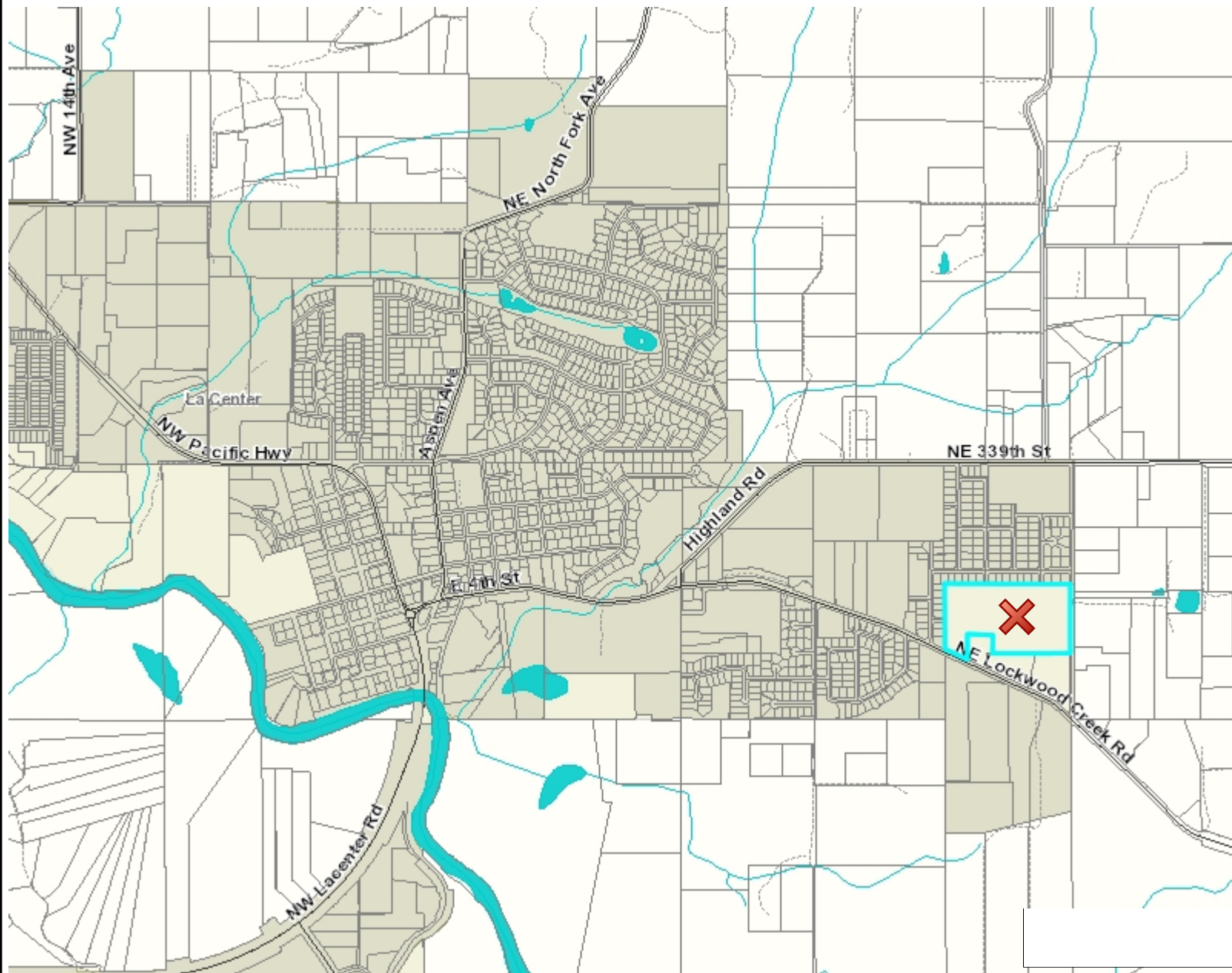
DATE: 01-21-2021

DWG FILE: 3094L1.dwg

DRAWN BY: JG



# Hung Annexation 209113000



## Legend

- Taxlots
- Cities Boundaries
- Urban Growth Boundaries

## Notes:

3,009.3 0 1,504.67 3,009.3 Feet

WGS\_1984\_Web\_Mercator\_Auxiliary\_Sphere  
Clark County, WA. GIS - <http://gis.clark.wa.gov>

This map was generated by Clark County's "MapsOnline" website. Clark County does not warrant the accuracy, reliability or timeliness of any information on this map, and shall not be held liable for losses caused by using this information.