

A PORTION OF SEC 4, 5 & 9, TWP 29 N, RGE 6 E, W.M. IN SNOHOMISH COUNTY, WA.

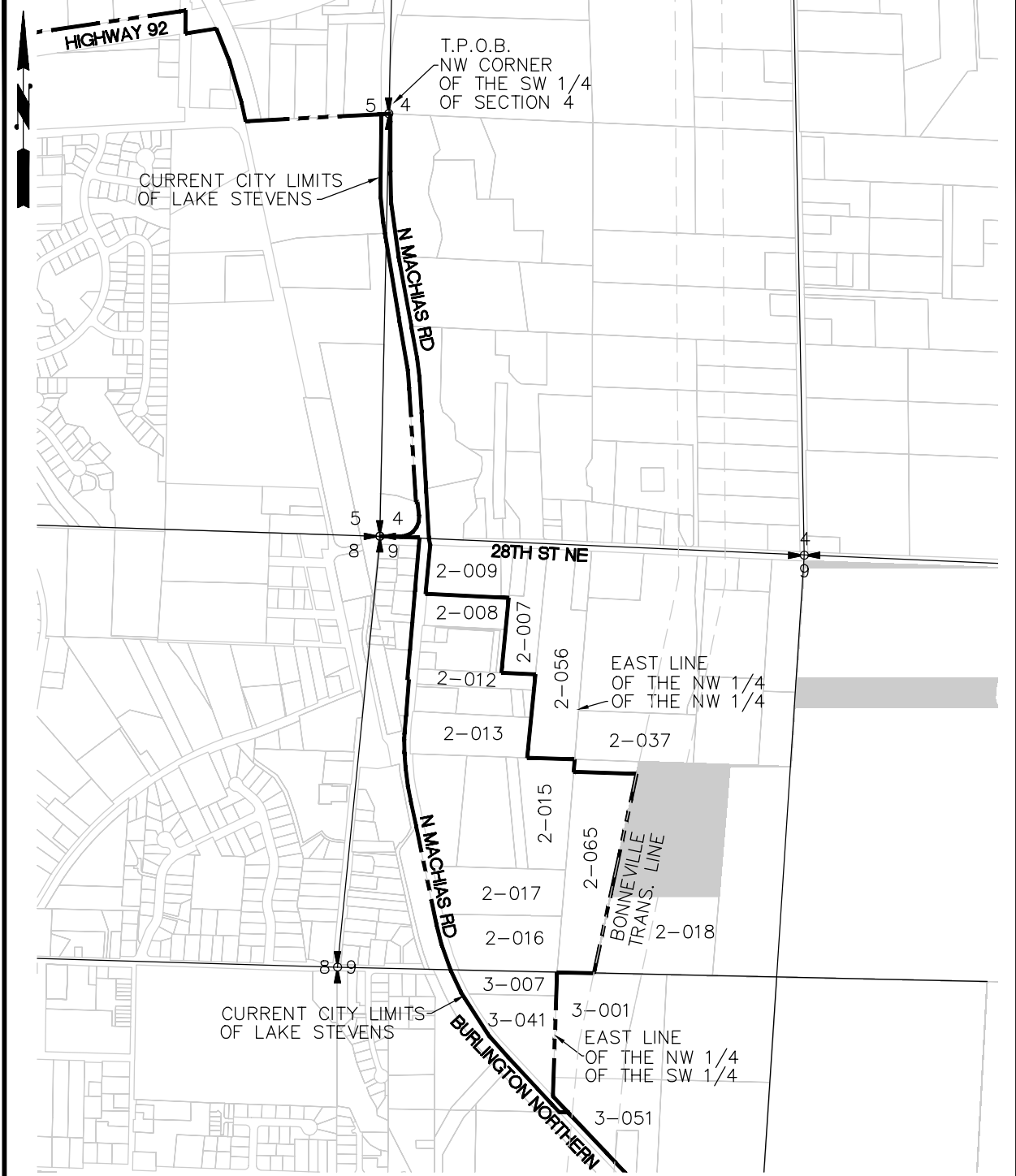


EXHIBIT "A"
CITY OF LAKE STEVENS
ANNEXATION
LEGAL DESCRIPTION



CHS
ENGINEERS

12507 Bel-Red RD., Suite 101,
Bellevue, WA 98005
www.chsengineers.com
Ph: 425-637-3693

Scale
1" = 1000'

Drawn by JPC Project # 371915

Checked by RL Date 08-19-20

Sheet
1 / 1