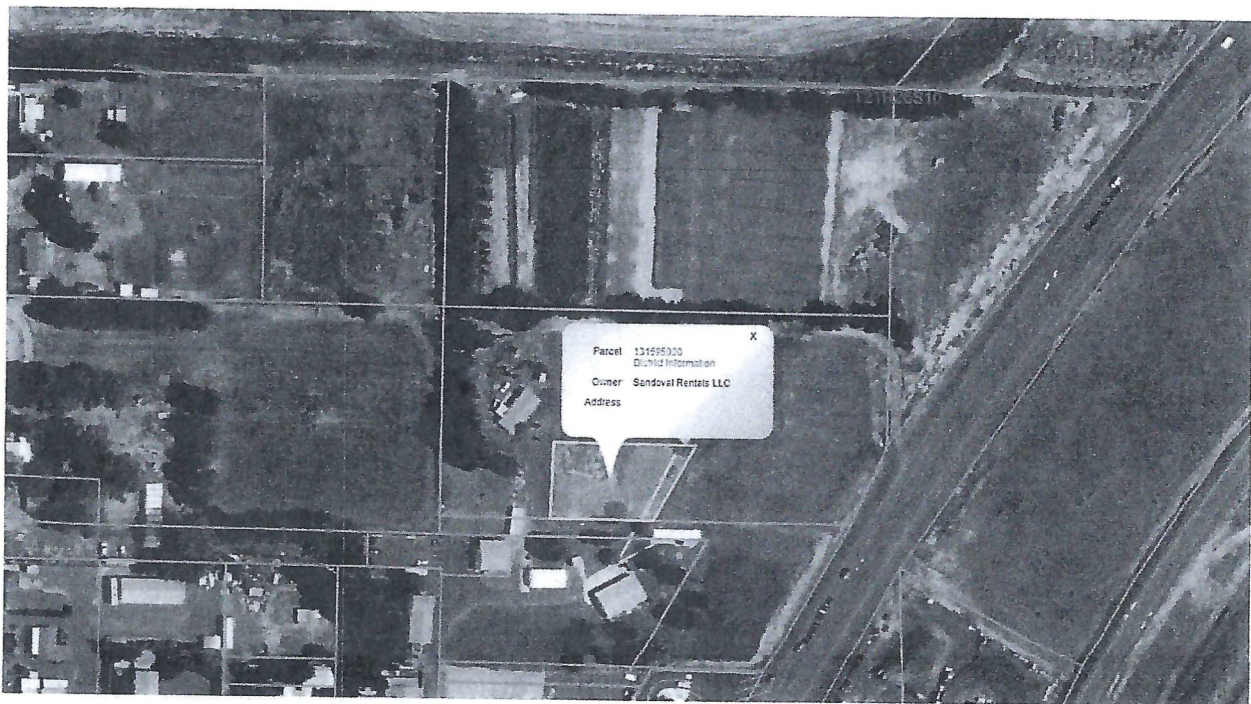


Exhibit A

Legal Description

TX# 896 IN LOT 2 BLK 4 EPHRATA IRRIG CO ORCHARD TRACTS TAX# 896 COMMENCIN AT THE SOUTHWEST CORNER OF LOT 2, BLOCK 4, EPHRATA IRRIGATION COMPANY'S ORCHARD TRACTS: THENCE EAST ALONG THE SOUTH LINE OF SAID LOT 2, A DISTANCE OF 133.83 FEET; THENCE NORTH AND PARALLEL WITH THE WEST LINE OF SAID LOT 2, A DISTANCE OF 30 FEET THE TRUE POINT OF BEGINNING; THENCE EAST AND PARALLEL WITH THE SOUTH LINE OF SAID LOT 2, A DISTANCE OF 175.50 FEET; THENCE NORTH 29°05'40" EAST, A DISTANCE OF 172.39; THENCE WEST AND PARALLEL WITH THE SOUTH LINE OF SAID LOT 2 TO A POINT WHICH IS 133.84 FEET FROM THE WEST LINE OF SAID LOT 2; THENCE SOUTH 150.53 FEET ON A STRAIGHT LINE TO THE POINT OF BEGINNING.



Sandoval Rentals Annexation



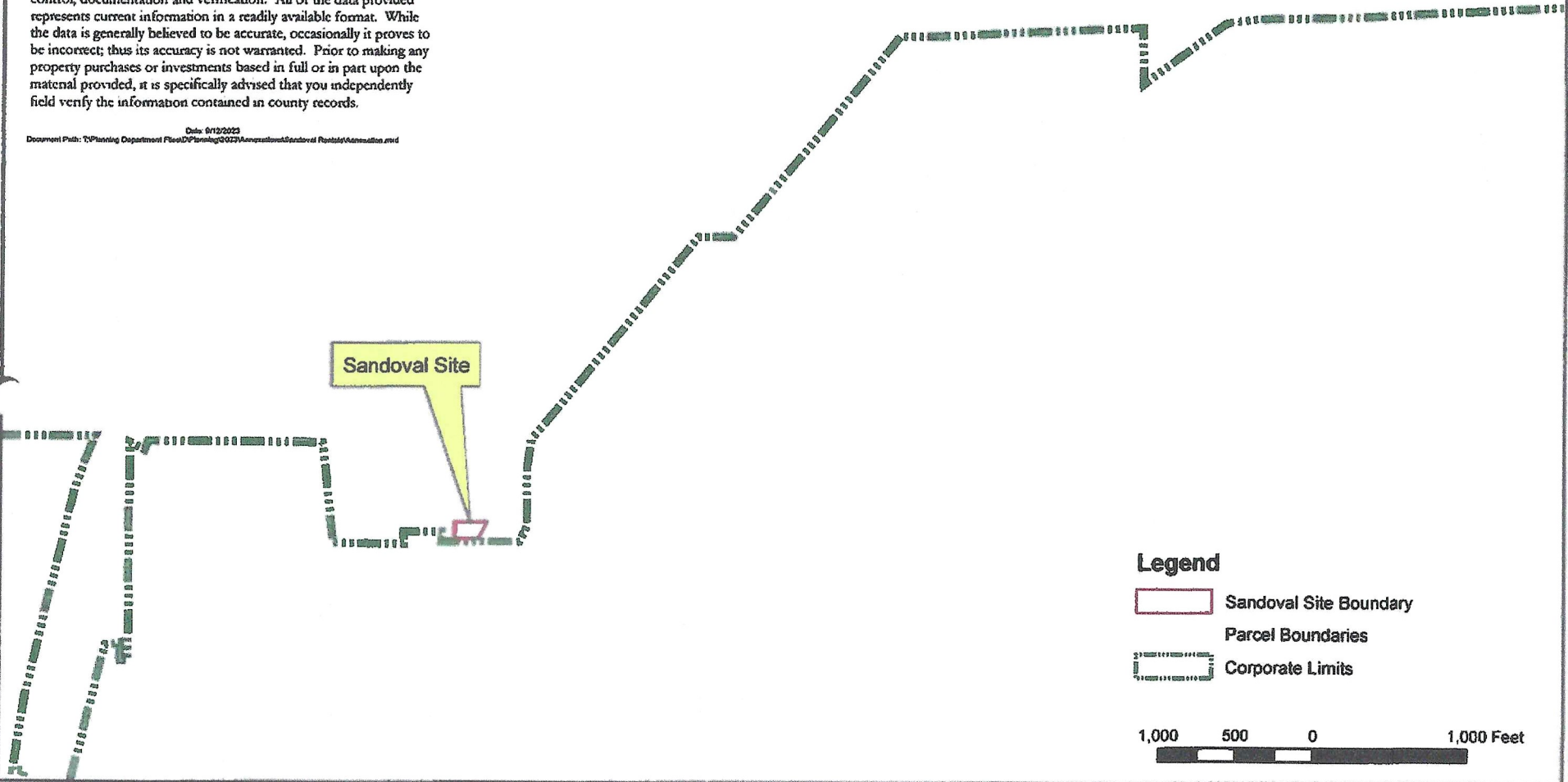
This map should not be construed as legal advice or legal opinion on any specific facts or circumstances. The contents are intended for general information purposes only, and you are urged to consult your own lawyer concerning your own situation and any specific questions you may have.

Infrastructure records, drawings, and other documents have been gathered over many decades, using differing standards for quality control, documentation and verification. All of the data provided represents current information in a readily available format. While the data is generally believed to be accurate, occasionally it proves to be incorrect; thus its accuracy is not warranted. Prior to making any property purchases or investments based in full or in part upon the material provided, it is specifically advised that you independently field verify the information contained in county records.

Date: 01/2/2023

Document Path: \\Planning Department Files\DP\Planning\2023\Annexation\Sandoval Rentals\Annexation.mxd

Sandoval Site



Legend

-  Sandoval Site Boundary
-  Parcel Boundaries
-  Corporate Limits

