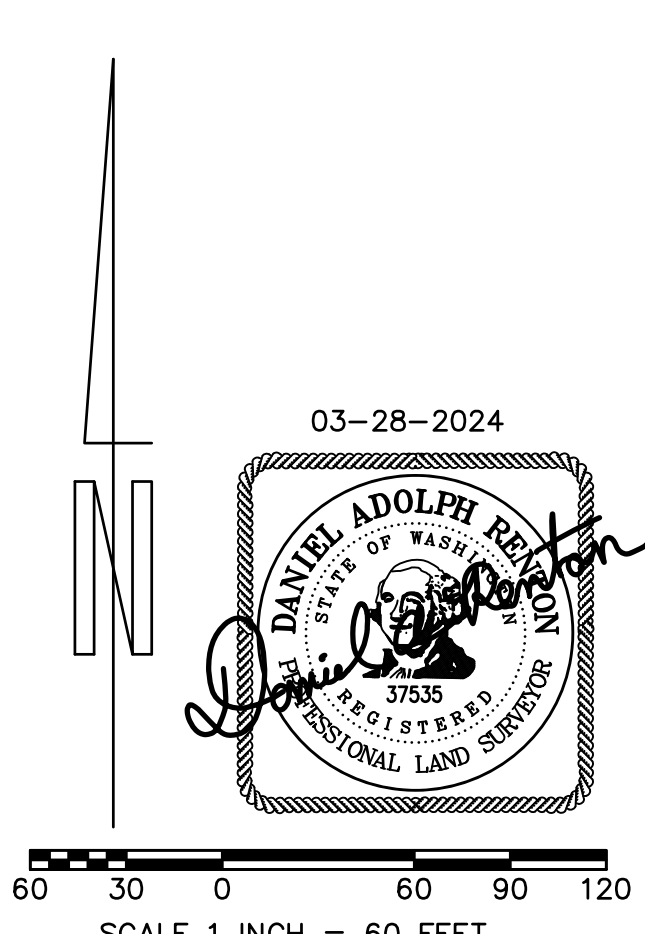
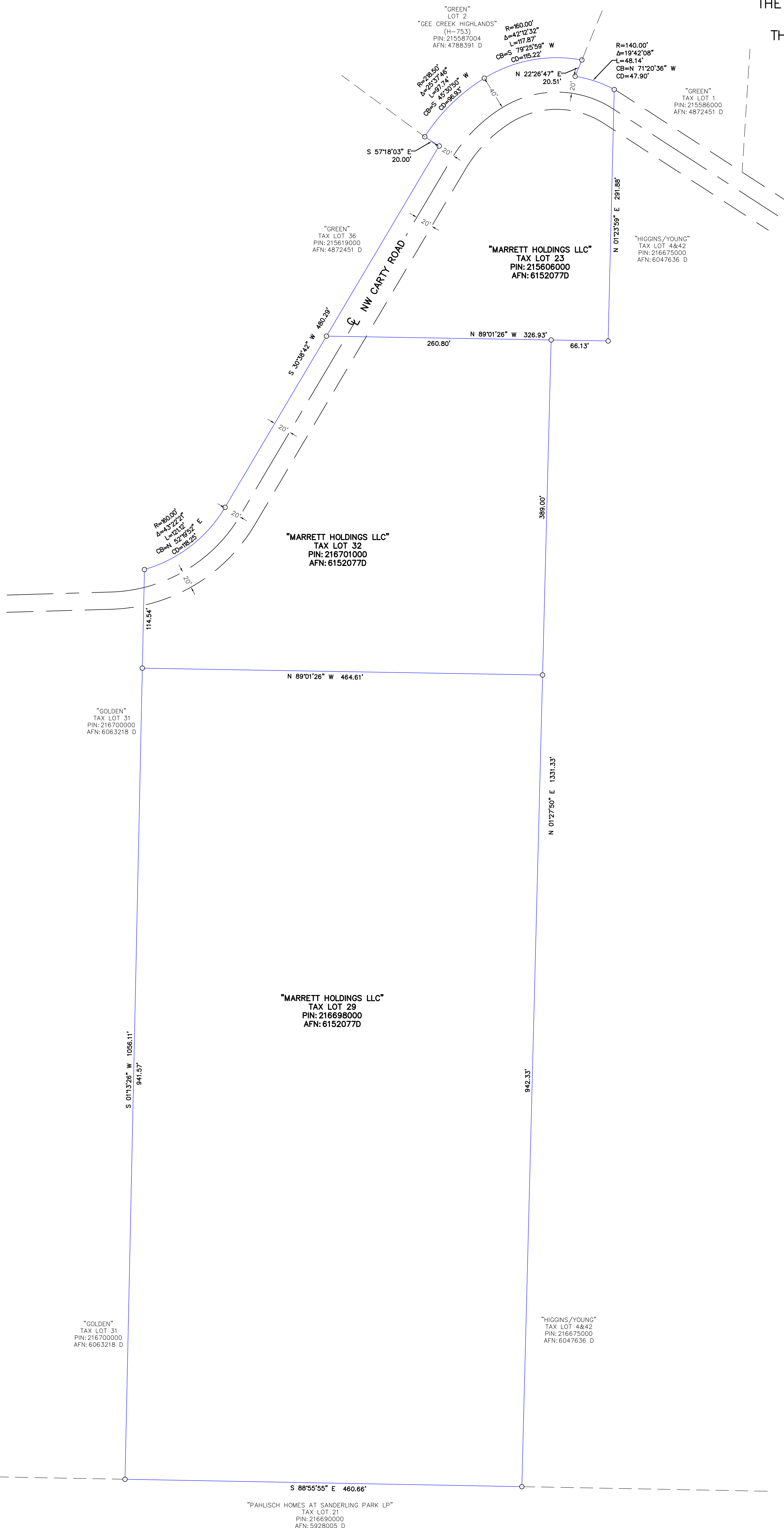
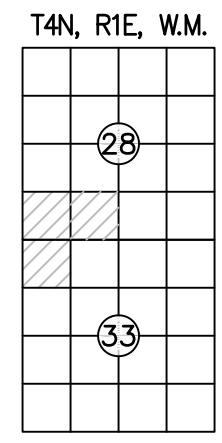


ANNEXATION

OF THE "MARRETT HOLDINGS LLC" PARCELS
 TAX LOT 23 (PIN: 215606000),
 TAX LOT 29 (PIN: 216698000)
 TAX LOT 32 (PIN: 216701000)
 IN A PORTION OF THE
 THE NW 1/4 OF THE NW 1/4
 OF SECTION 33 AND
 THE SW 1/4 AND SE 1/4
 OF SECTION 28
 T. 4 N., R. 1 E., W.M.
 CLARK COUNTY, WA



	MINISTER-GLAESER		SCALE: 1"=60'
	SURVEYING INC.		JOB NO. 23-231
	2200 E. EVERGREEN BLVD.		DATE: 03-28-2024
	VANCOUVER, WA 98661		CALC BY: DAR
	(360) 694-3313		DRAWN BY: DAR
			CHECKED BY: DAR
			SHEET 1 OF 1