

Figure 1. Vicinity map

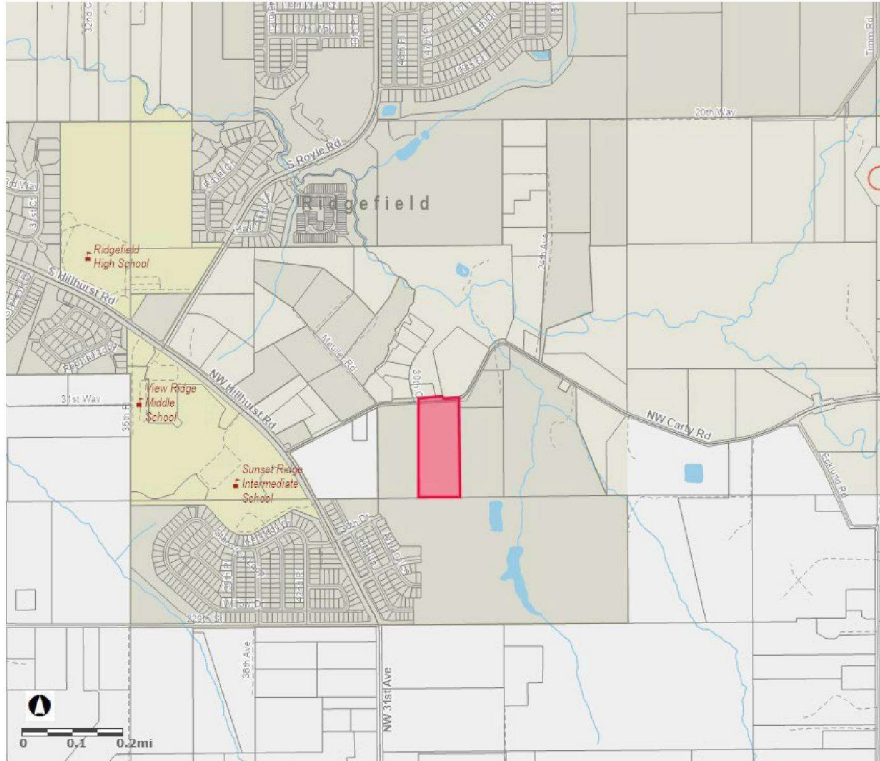
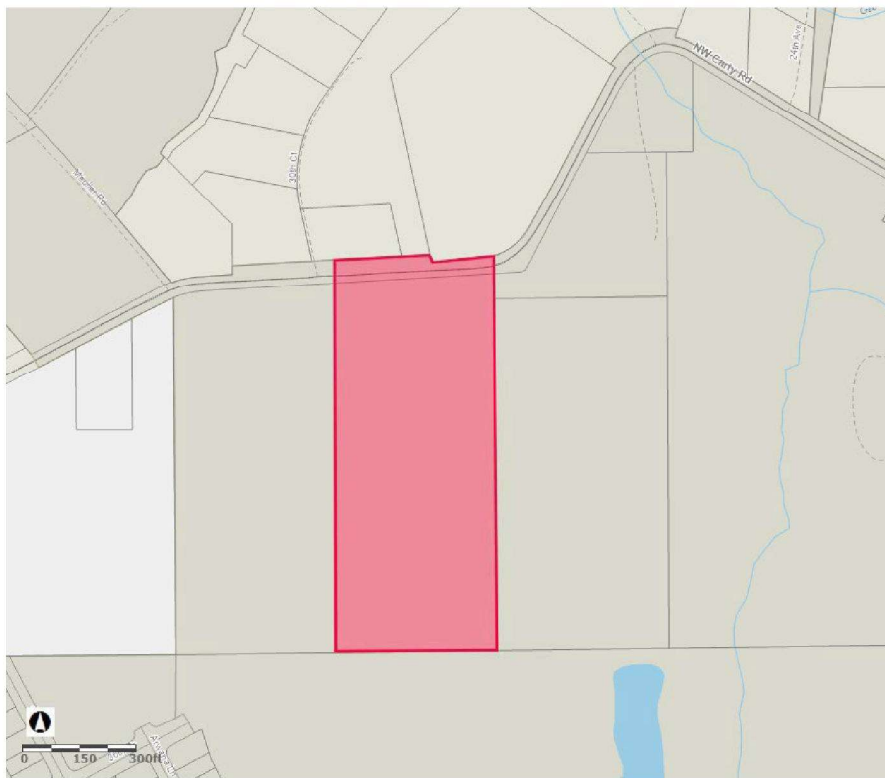
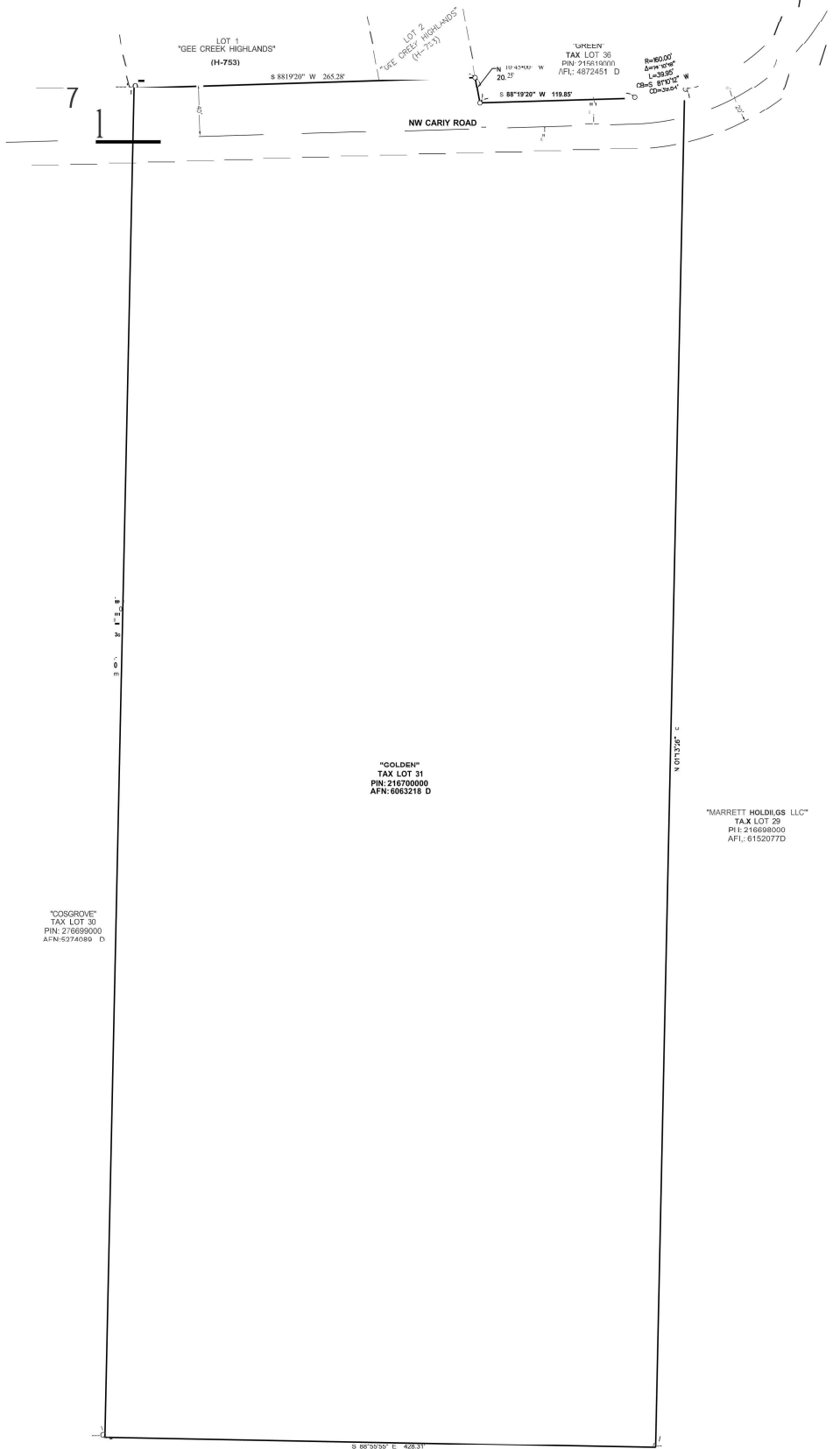


Figure 2. Site map



ANNEXATION
OF THE "GOLDEN" PARCEL
TAX LOT 31
PIN: 216700000
IN A PORTION OF THE
THE NW 1/4 OF THE NW 1/4
OF SECTION 33
T. 4 N., R. 1 E., W.M.
CLARK COUNTY, WA

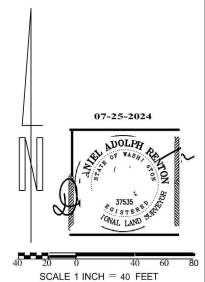


"COSGROVE"
TAX LOT 30
PIN: 216699000
AFN: 6274089 D

"GOLDEN"
TAX LOT 31
PIN: 216700000
AFN: 6063218 D

"MARRETT HOLDINGS LLC"
TAX LOT 29
PIN: 216698000
AFN: 6152077D

"PRIVILEGE HOMES AT SANDERLIJG PARK LP"
TAX LOT 21
PIN: 276690000
AFN: 6026005 D



 **MINISTER-GLAESER SURVEYING INC.**
7210 F. EVERGREEN BLVD.
VANCOUVER, WA 98661
(360) 694-3313

SCALE: 1"=40'
JOB NO. 24-299
DATE: 07-25-2024
CALC BY: DAB
DRAWN BY: DAB
CHECKED BY: DAB
SHEET 1 of 1