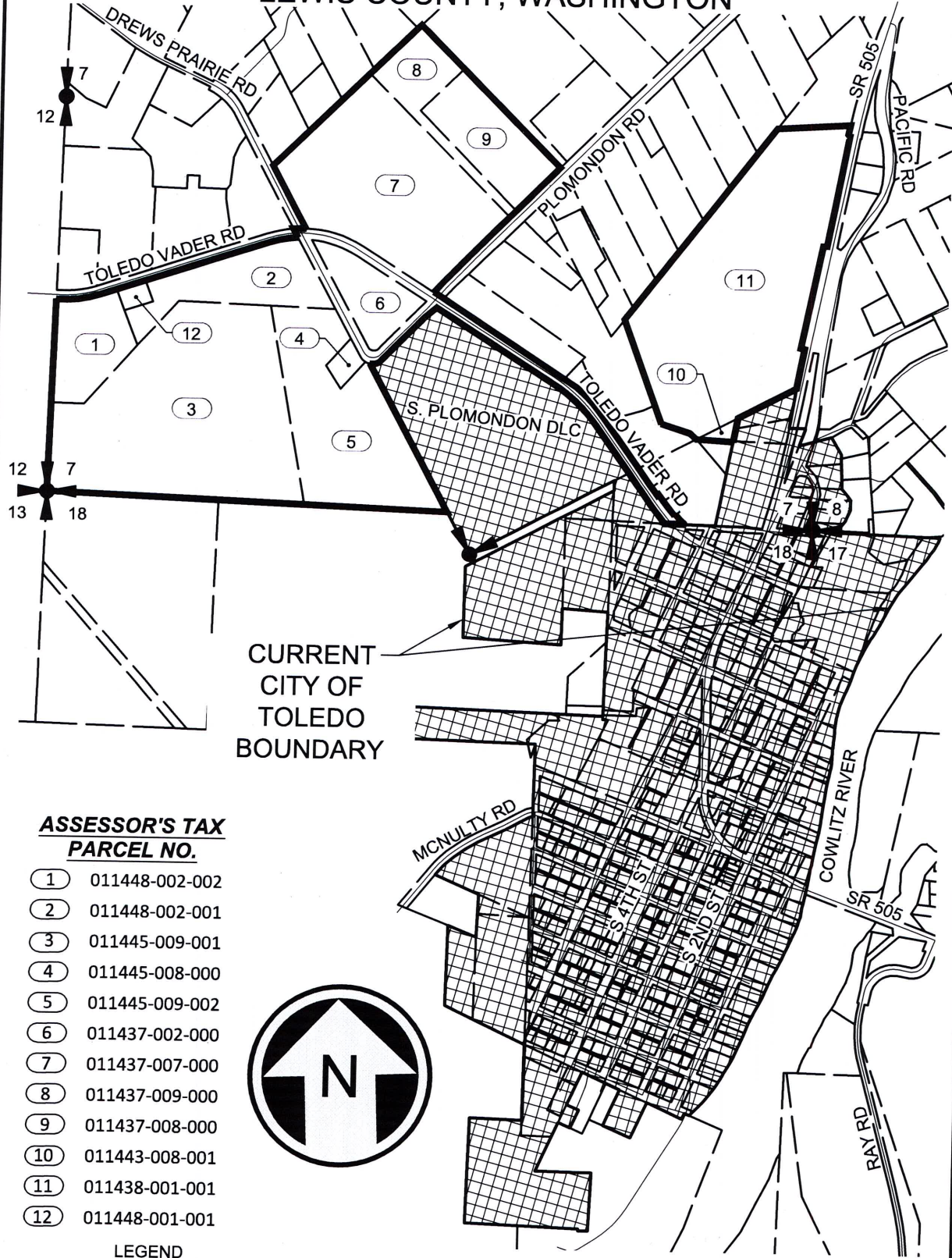


EXHIBIT A

CITY OF TOLEDO ANNEXATION AREA

LEWIS COUNTY, WASHINGTON



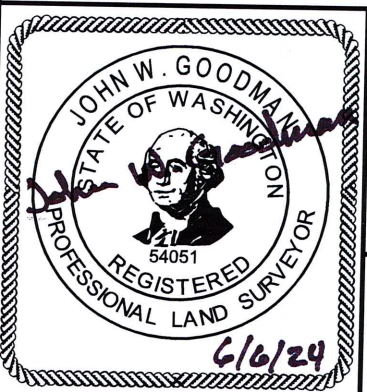
CURRENT
CITY OF
TOLEDO
BOUNDARY

**ASSESSOR'S TAX
PARCEL NO.**

- ① 011448-002-002
- ② 011448-002-001
- ③ 011445-009-001
- ④ 011445-008-000
- ⑤ 011445-009-002
- ⑥ 011437-002-000
- ⑦ 011437-007-000
- ⑧ 011437-009-000
- ⑨ 011437-008-000
- ⑩ 011443-008-001
- ⑪ 011438-001-001
- ⑫ 011448-001-001

LEGEND

- ANNEXATION LINE
- STREET CENTER LINE
- PARCEL LINE
- EX. CITY LIMITS



**FORESIGHT
SURVEYING, INC.**

PROFESSIONAL LAND SURVEYORS

1583 N NATIONAL AVE
CHEHALIS, WA 98532 OFFICE: (360) 748-4000

ANNEXATION EXHIBIT A

JOB NO: 5201

DATE: 06/06/2024

CITY OF TOLEDO, LEWIS COUNTY, WASHINGTON