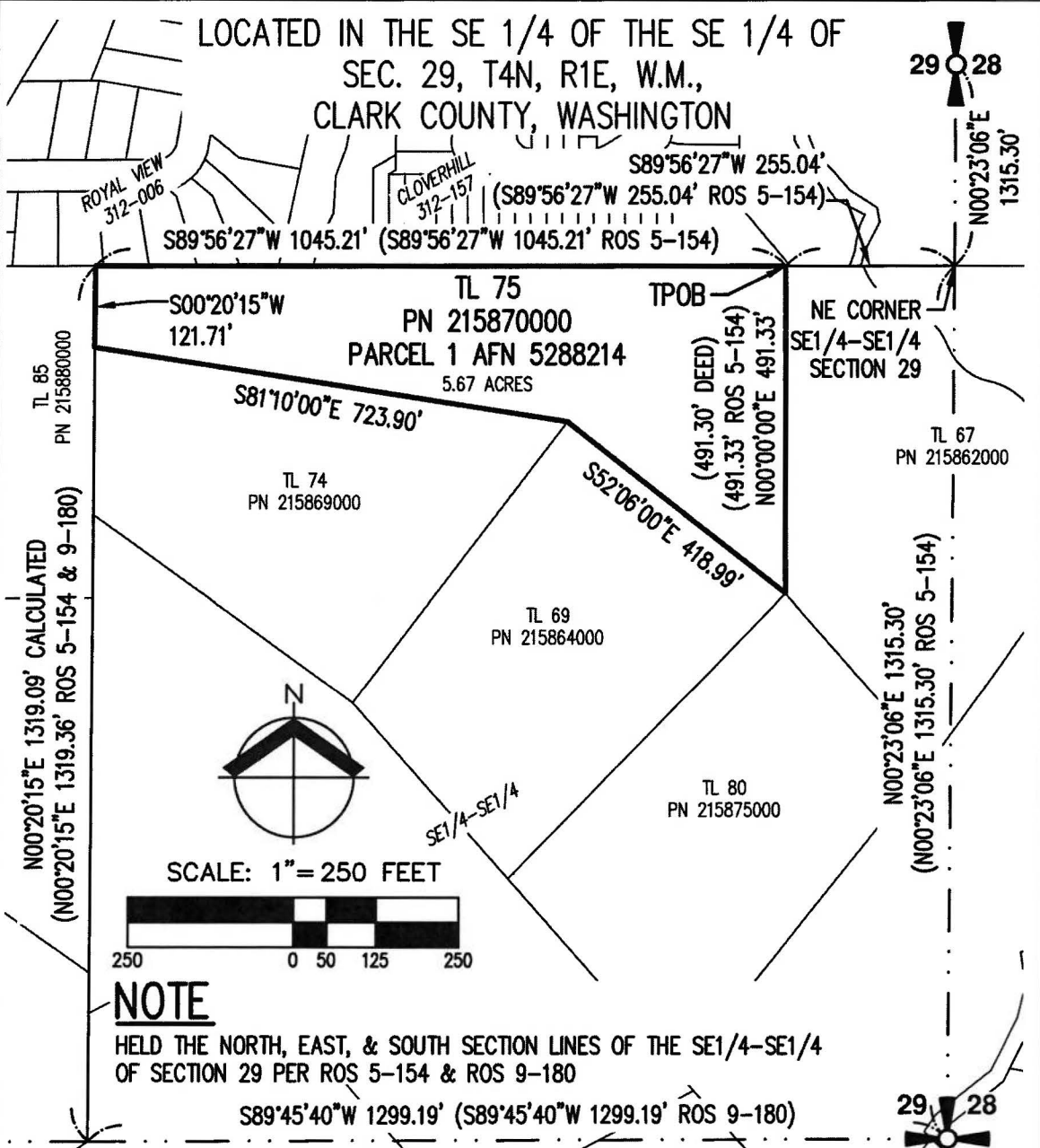


LOCATED IN THE SE 1/4 OF THE SE 1/4 OF  
 SEC. 29, T4N, R1E, W.M.,  
 CLARK COUNTY, WASHINGTON



MAP EXHIBIT PN 215870000 (TL#75)			
DRAWN BY: TDH	CHECKED BY: DW	DWG: 10781EXH LD ANNEX	JOB: 10781
AKS ENGINEERING & FORESTRY, LLC 9600 NE 126TH AVE, SUITE 2520 VANCOUVER, WA 98682 360.882.0419 WWW.AKS-ENG.COM			



DATE: 12-20-2024