

# WSDC Annual Meeting

## Census Updates

### September 22, 2020

**Presented by: Heidi Crawford**

Data Dissemination Specialist  
Customer Liaison & Marketing Services Office  
Data Dissemination & Training Branch  
U.S. Census Bureau



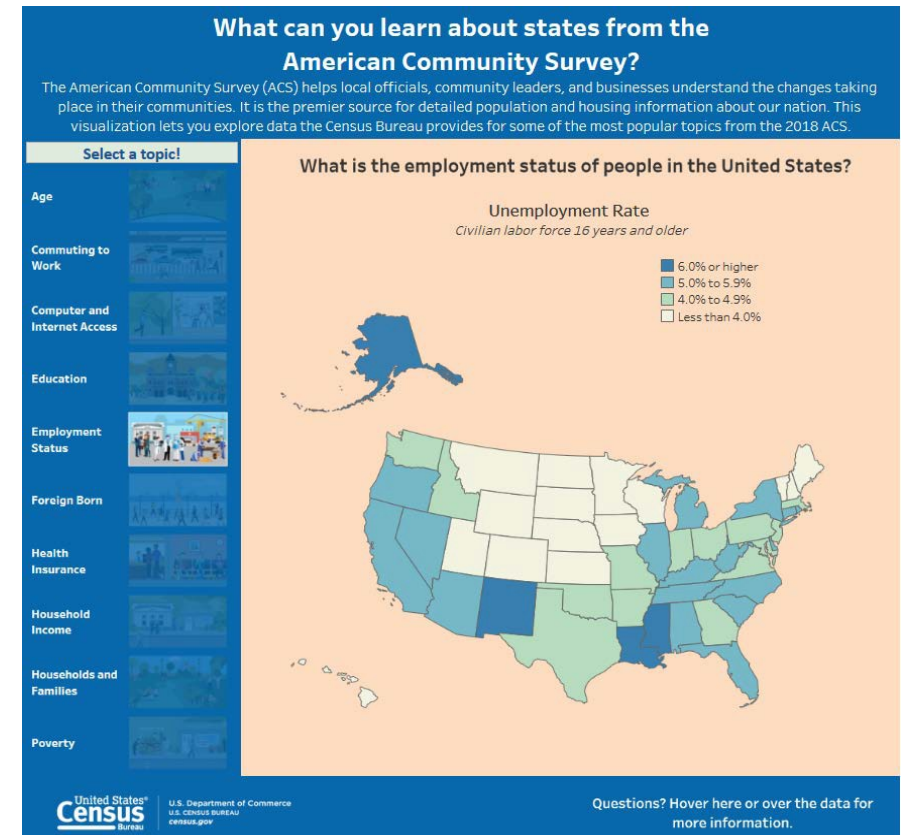
# Agenda

- 2019 ACS 1-year Data Release
- 2019 Income, Poverty, and Health Insurance Release
- COVID Resources
  - COVID Hub
  - Pulse Surveys
  - Other new Demographic and Economic Tools
- 2020 Census Experience Survey
- Statistics in Schools

# 2019 ACS Data Release September 17, 2020

**Thursday, September 17<sup>th</sup>**

- 2019 ACS 1-year public release
  - Data Profiles
  - Detailed Tables
  - Comparison Profiles
  - Selected Population Profiles
  - Subject Tables
  - Summary File
- ACS Data Tools: [data.census.gov](https://data.census.gov), My Congressional District, QuickFacts, API
- Visualizations



[census.gov/programs-surveys/acs/news/data-releases/2019/release-schedule.html](https://census.gov/programs-surveys/acs/news/data-releases/2019/release-schedule.html)

# Future ACS Data Releases

## **2019 ACS 1-Year Supplemental Estimates (Geographies of 20,000+)**

- October 15, 2020: Public Release

## **2015-2019 ACS 5-Year Estimates (All geographic areas)**

- December 8, 2020: Embargo Begins
- December 10, 2020: Public Release Begins

## **Public Use Microdata Sample Files (PUMS)**

- October 15, 2020: 2019 1-Year PUMS File
- January 14, 2021: 2015-2019 5-Year PUMS File

## **2015-2019 Variance Replicate Estimates**

- January 14, 2021: Public Release

[census.gov/programs-surveys/acs/news/data-releases/2019/release-schedule.html](https://census.gov/programs-surveys/acs/news/data-releases/2019/release-schedule.html)

# ACS Content Changes Impacting Data Products

## Relationship to Householder

- Specific information now collected for the following categories:
  - Opposite-sex spouse
  - Opposite-sex unmarried partner
  - Same-sex spouse
  - Same-sex unmarried partner
- Roomer/boarder category deleted

**2** How is this person related to Person 1? Mark (X) ONE box.

<input type="checkbox"/> Opposite-sex husband/wife/spouse	<input type="checkbox"/> Father or mother
<input type="checkbox"/> Opposite-sex unmarried partner	<input type="checkbox"/> Grandchild
<input type="checkbox"/> Same-sex husband/wife/spouse	<input type="checkbox"/> Parent-in-law
<input type="checkbox"/> Same-sex unmarried partner	<input type="checkbox"/> Son-in-law or daughter-in-law
<input type="checkbox"/> Biological son or daughter	<input type="checkbox"/> Other relative
<input type="checkbox"/> Adopted son or daughter	<input type="checkbox"/> Roommate or housemate
<input type="checkbox"/> Stepson or stepdaughter	<input type="checkbox"/> Foster child
<input type="checkbox"/> Brother or sister	<input type="checkbox"/> Other nonrelative

[census.gov/programs-surveys/acs/technical-documentation/table-and-geography-changes/2019/1-year.html](https://census.gov/programs-surveys/acs/technical-documentation/table-and-geography-changes/2019/1-year.html)

# ACS Content Changes Impacting Data Products (Continued)

## **Means of Transportation** - Multiple categories updated

### 2018 categories:

- Bus or trolley bus
- Streetcar or trolley car (carro publico in Puerto Rico)
- Subway or elevated rail
- Railroad
- Worked at home

### 2019 categories:

- Bus
- Subway or elevated rail
- Long-distance train or commuter rail
- Light rail, streetcar, or trolley (carro público in Puerto Rico)
- Worked from home

# ACS New Tables

## Households and Families

- **B11008:** Cohabiting Couple Households By Presence And Age Of Own Children Under 18 Years
- **B11012:** Households By Type

## Foreign-Born Population

- **B05015:** Place Of Birth By Year Of Entry For The Foreign-Born Population

## Quality Measures

- **B98003:** Unweighted Total Population Sample

## Health Insurance

- **S2713:** Private Health Insurance Coverage By Type And Selected Characteristics

TableID	Line Number	Description
B11008		COHABITING COUPLE HOUSEHOLDS BY PRESENCE AND AGE OF OWN CHILDREN UNDER 18 YEARS
B11008		Universe: Households
B11008	1	Total:
B11008	2	Cohabiting couple household:
B11008	3	With own children of the householder under 18 years:
B11008	4	Under 6 years only
B11008	5	Under 6 years and 6 to 17 years
B11008	6	6 to 17 years only
B11008	7	With no own children of the householder under 18 years
B11008	8	Not a cohabiting couple household

[census.gov/programs-surveys/acs/technical-documentation/table-shells.html](https://census.gov/programs-surveys/acs/technical-documentation/table-shells.html)

# ACS Deleted Tables

## Sample Counts

- B00001: Unweighted Sample Count Of The Population
- B00002: Unweighted Sample Housing Units

## Relationship

- B09008 & C09008: Presence Of Unmarried Partner Of Householder By Household Type For Children Under 18 Years In Households

TableID	Line Number	Description
B09008		PRESENCE OF UNMARRIED PARTNER OF HOUSEHOLDER BY HOUSEHOLD TYPE FOR CHILDREN UNDER 18 YEARS IN HOUSEHOLDS
B09008		Universe: Population under 18 years in households (excluding householders, spouses, and unmarried partners)
B09008	1	Total:
B09008	2	Unmarried partner of householder present:
B09008	3	In family households:
B09008	4	In male householder, no wife present, family
B09008	5	In female householder, no husband present, family
B09008	6	In nonfamily households
B09008	7	No unmarried partner of householder present:
B09008	8	In family households:
B09008	9	In married-couple family
B09008	10	In male householder, no wife present, family
B09008	11	In female householder, no husband present, family
B09008	12	In nonfamily households

[census.gov/programs-surveys/acs/technical-documentation/table-and-geography-changes/2019/1-year.html](https://www.census.gov/programs-surveys/acs/technical-documentation/table-and-geography-changes/2019/1-year.html)



# ACS Geography Update

- **New Geographies:**
  - **American Indian off-reservation trust lands:** 3 new geographies in Arizona, California, and Washington
  - **County Subdivisions:** 1 new geography in Illinois
  - **Census Designated Places:** 2 new geographies in Florida and Missouri
- **Boundary changes due to annexation, disincorporation, and geocoding updates**

[census.gov/programs-surveys/acs/technical-documentation/table-and-geography-changes.html](https://census.gov/programs-surveys/acs/technical-documentation/table-and-geography-changes.html)

## Income and Poverty in the United States: 2019

### Current Population Reports

By Jessica Semega, Melissa Kollar, Emily A. Shrider, and John F. Creamer  
Issued September 2020  
P60-270



United States<sup>®</sup>  
**Census**  
Bureau

U.S. Department of Commerce  
U.S. CENSUS BUREAU  
[census.gov](https://www.census.gov)

## The Supplemental Poverty Measure: 2019

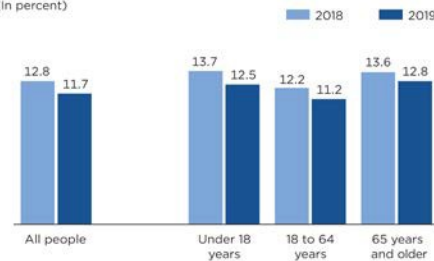
### Current Population Reports

By Liana Fox  
P60-272  
September 2020

#### INTRODUCTION

Since the publication of the first official U.S. poverty estimates, researchers and policymakers have continued to discuss the best approach to measure income and poverty in the United States. Beginning in 2011, the U.S. Census Bureau began publishing the Supplemental Poverty Measure (SPM), which extends the official poverty measure by taking account of many of the government programs designed to assist low-income families and individuals that are not included in the official poverty measure. The SPM is produced with the support of the Bureau of Labor Statistics (BLS), and this is the tenth in the series. This report presents estimates of the prevalence of poverty in the United States using the official measure and the SPM based on information collected in 2020 and earlier Current Population Survey Annual Social and Economic Supplements (CPS ASEC). The data collection period for the 2020 CPS ASEC coincided with the COVID-19 pandemic, the

Figure 1.  
Supplemental Poverty Measure Rates for Total Population and by Age Group: 2018 and 2019  
(In percent)



Note: For information on confidentiality protection, sampling error, nonsampling error, and definitions, see: <<https://www2.census.gov/programs-surveys/cps/techdocs/cpsmar20.pdf>>.  
Source: U.S. Census Bureau, Current Population Survey, 2019 and 2020 Annual Social and Economic Supplements (CPS ASEC).

associated public health response, and the end of the economic expansion. For details on the impact of COVID-19 on CPS ASEC data collection, see the text box "The Impact of the Coronavirus (COVID-19) Pandemic on the CPS ASEC."

#### HIGHLIGHTS

- In 2019, the overall SPM rate was 11.7 percent. This was 1.0 percentage point lower than the 2018 SPM rate of 12.8 (Figure 1).<sup>1</sup>

<sup>1</sup> Calculated differences here and throughout this report may differ due to rounding.

United States<sup>®</sup>  
**Census**  
Bureau

U.S. Department of Commerce  
U.S. CENSUS BUREAU  
[census.gov](https://www.census.gov)

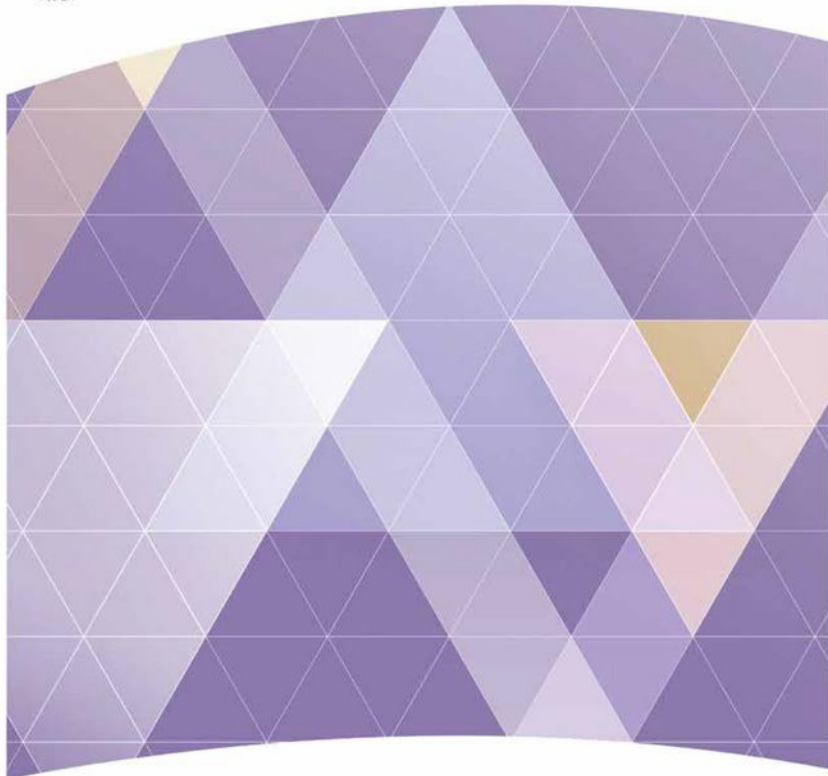
- Data are based on the Current Population Survey's Annual Social and Economic Supplement (CPS ASEC) from February, March, and April 2020.
- CPS ASEC is the official source of national poverty estimates.
- Official poverty estimates are calculated in accordance with OMB Statistical Policy Directive 14.

United States<sup>®</sup>  
**Census**  
Bureau

## Health Insurance Coverage in the United States: 2019

### Current Population Reports

By Katherine Keisler-Starkey and Lisa N. Bunch  
Issued September 2020  
P60-271



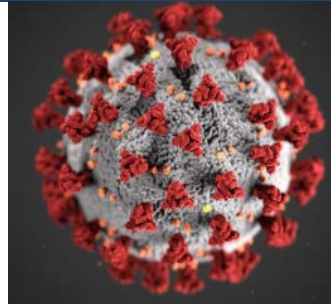
United States<sup>®</sup>  
**Census**  
Bureau

U.S. Department of Commerce  
U.S. CENSUS BUREAU  
[census.gov](https://www.census.gov)

- Includes data from the Current Population Survey's Annual Social and Economic Supplement (CPS ASEC) and the American Community Survey (ACS).
- ACS is the recommended source for smaller populations and levels of geography.

# COVID - 19 Demographic and Economic Resources

United States Census Bureau



<https://covid19.census.gov/>

<https://www.census.gov/topics/preparedness/events/pandemics/covid-19.html>



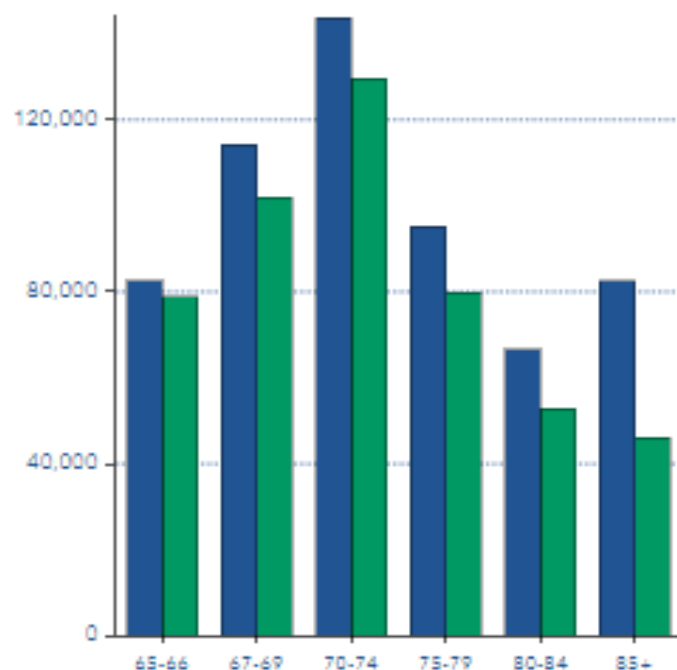
# STATE COVID-19 IMPACT PLANNING REPORT

Washington (FIPS 53)



## POPULATION 65 AND OLDER

■ Females ■ Males



## KEY FACTS

**7,294,336**

Total Population

**2,800,423**

Total Households

**2.55**

Average Household Size

**37.6**

Median Age

**86.9%**

Internet At Home

## BUSINESSES



**191,045**

Total Employer Establishments



**2,768,660**

Total Employees



**\$169,766,372**

Total Annual Payroll (\$1,000)



**478,331**

Total Non-Employer Establishments



**\$23,926,194**

Total Non-Employer Revenue (\$1,000)

## POVERTY



**302,663**

Households Below Poverty Level



**350,611**

Households Receiving Food Stamps/SNAP

## AT-RISK POPULATION



**711,718**

Households With Disability



**280,252**

Households w/Pop 65+ Living Alone



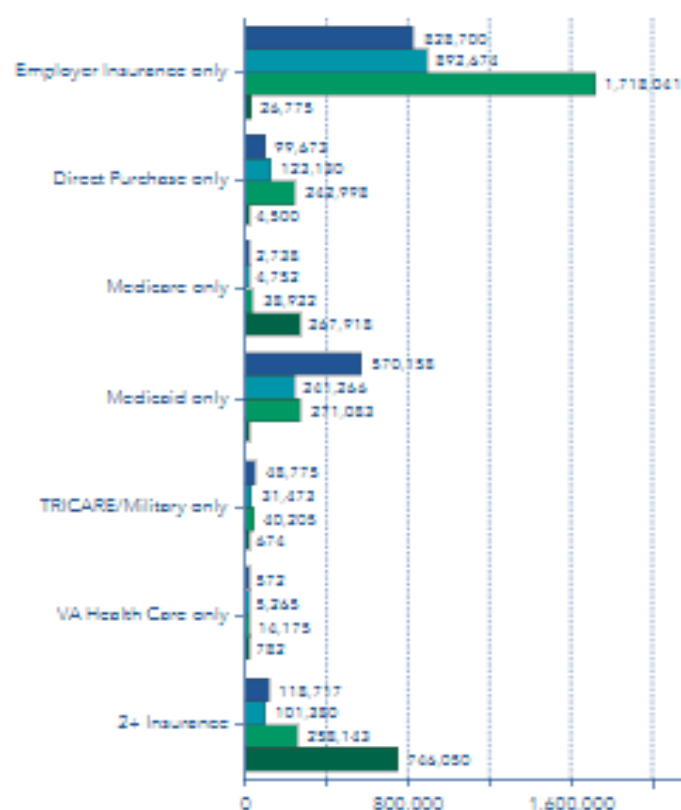
**192,165**

Households Without Vehicle

## HEALTH INSURANCE COVERAGE BY AGE

(Civilian Noninstitutionalized Population)

■ Pop 0-18 ■ Pop 19-24 ■ Pop 25-64 ■ Pop 65+



# COVID Resources – Pulse Survey's/Other Tools

## Demographic

- Household Pulse Survey (Phase 2 August 19, 2020 – October 26, 2020): Measuring Household Experiences during the Coronavirus Pandemic
  - <https://www.census.gov/data/experimental-data-products/household-pulse-survey.html>
- Community Resilience Estimates: Are experimental estimates produced using information on individuals and households from various surveys and other data
  - <https://www.census.gov/data/experimental-data-products/community-resilience-estimates.html>

## Business

- Small Business Pulse Survey (Phase 2 August 20, 2020 – October 15, 2020): Measures the effect of changing business conditions during the Coronavirus pandemic on our nation's small businesses
  - <https://www.census.gov/data/experimental-data-products/small-business-pulse-survey.html>
- Business Formation Statistics: The BFS provide timely and high frequency information on new business applications and formations in the United States
  - <https://www.census.gov/econ/bfs/index.html>



# 2020 Census User Experience Survey

- Survey asking a sample of respondents who used the online 2020 Census questionnaire how satisfied they were with their experience
- A limited number of people from across the country were scientifically selected to represent the entire population
- The Census Bureau is only **using text messages** to notify people about this survey. There will be no email and no postal mail associated with this survey. Text messages will only be sent from one of three phone numbers:
  - **(833) 972-2561**
  - **(833) 969-2724**
  - **(833) 972-2579**
- The 2020 Census User Experience Survey will take place between August and October 2020

# Statistics in Schools



**Statistics in Schools (SIS)** is an ongoing program created using Census Bureau data. SIS provides free pre-K-12 classroom materials to improve students' statistical literacy and prepare them for an increasingly data-driven world.

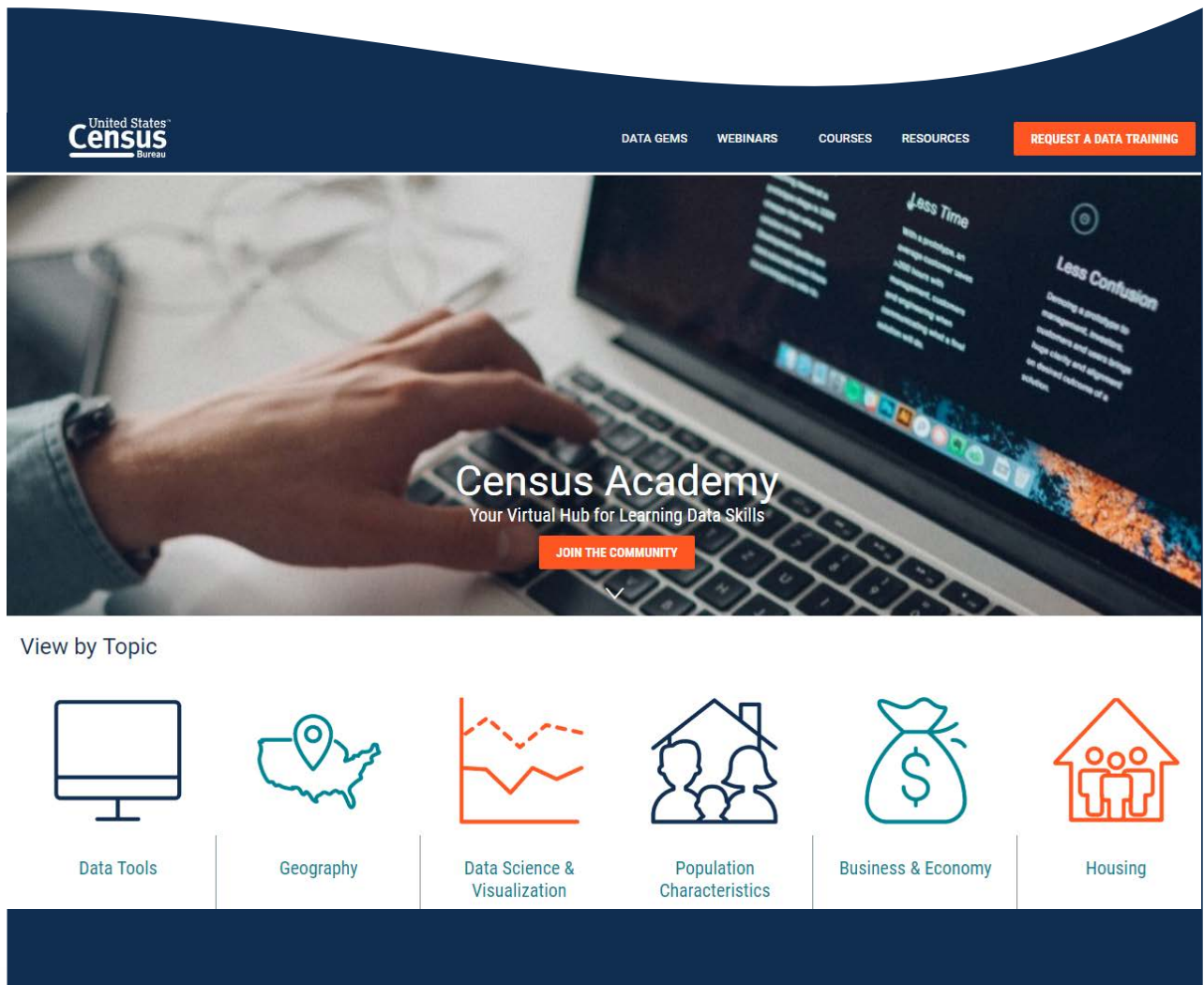
<https://www.census.gov/schools>

Home and Distance Learner Toolkits and Resources:

<https://www.census.gov/content/census/en/programs-surveys/sis/activities/distance-learning.html>



# Data Dissemination and Training: [census.gov/academy](https://census.gov/academy)



- ✓ **Bring our data experts to you.**  
[Request](#) a free data training for your organization.
- ✓ **Subscribe to [Census.gov/academy](https://census.gov/academy).**  
Join our educational hub to receive our updates and training products.
- ✓ **Receive our Data Gems.**  
These short “how-to” videos are an easy and quick way to increase your knowledge of Census data. Get them in your inbox!
- ✓ **Get access to our data courses.**  
You will learn-at-your-own-pace with these video-tutorials designed for different skill levels.
- ✓ **Interact with our instructors via webinars.**  
Learn about our data releases and tools while attending these live virtual classes.



[Census.askdata@census.gov](mailto:Census.askdata@census.gov)  
1-844-ASK-DATA

Connect with us on [Social Media](#)

# Resources: Need Assistance?

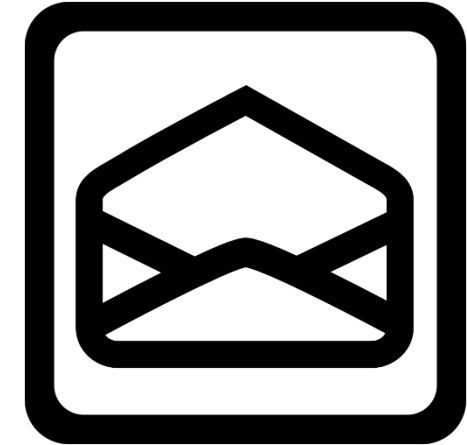
**U.S. Census Bureau  
Data Dissemination Specialist**



**Heidi Crawford**

**(202) 774-4445**

[heidi.r.crawford@census.gov](mailto:heidi.r.crawford@census.gov)



**Toll-free number:**

**1-844-ASK-DATA**

**(1-844-275-3282)**

**For general questions:**

[census.askdata@census.gov](mailto:census.askdata@census.gov)