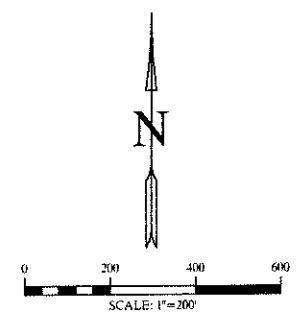
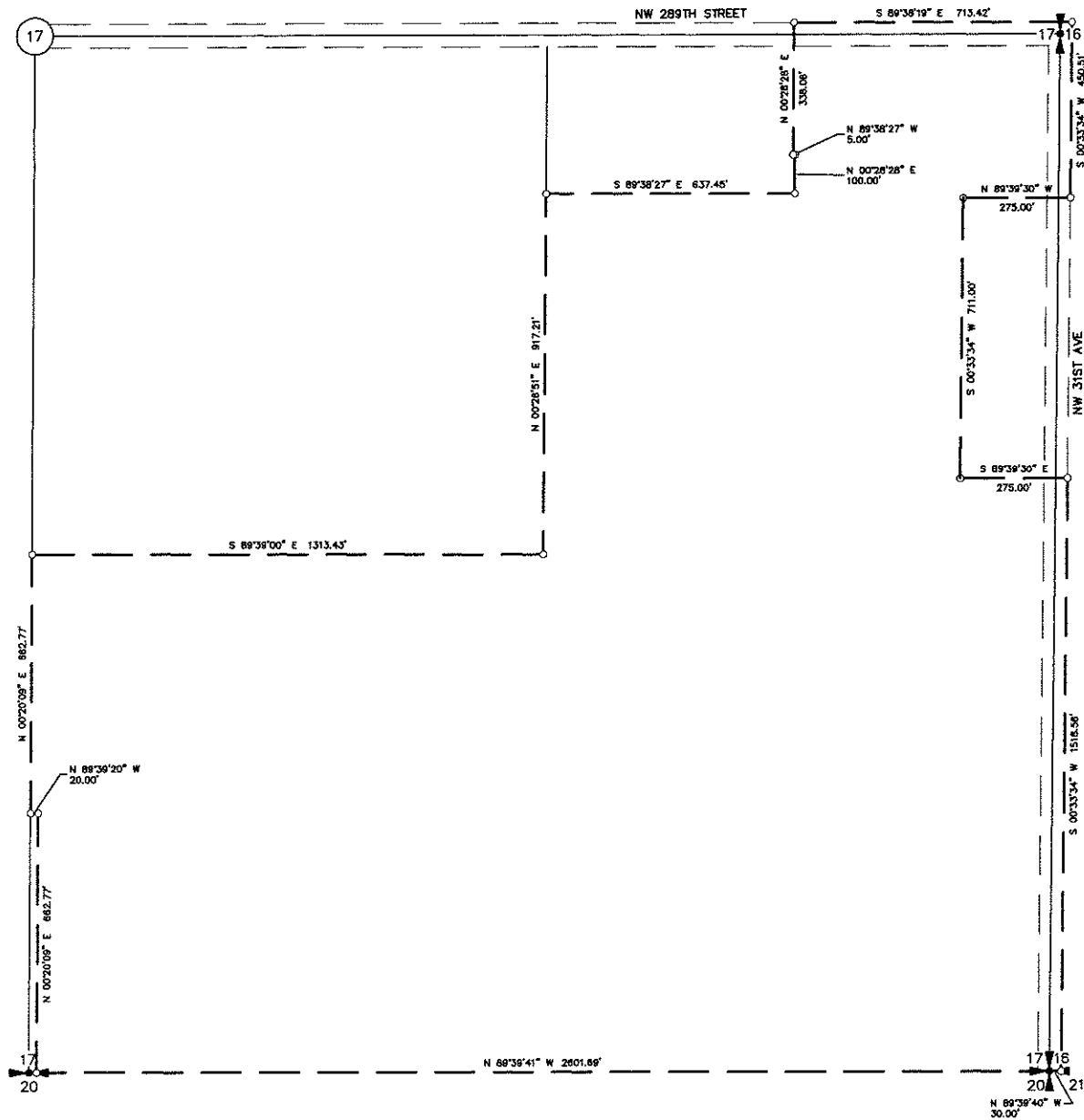


SKETCH

IN A PORTION OF
 THE SE 1/4 AND NE 1/4 OF
 SECTION 17,
 AND THE SW 1/4 AND NW 1/4
 OF SECTION 16,
 T. 4 N., R. 1 E., W.M.,
 CLARK COUNTY, WASHINGTON



DATE:	6-24-16
SCALE:	1"=200'
JOB NO.:	16-043
CALC BY:	KPF
DRAWN BY:	GLF
CHECKED BY:	KPF
SHEET	1 OF 1

KPF
 SURVEYING, INC.
 1514 N.E. 267TH AVE CAMAS, WA 98607
 360-834-0174 fax: 360-838-0155