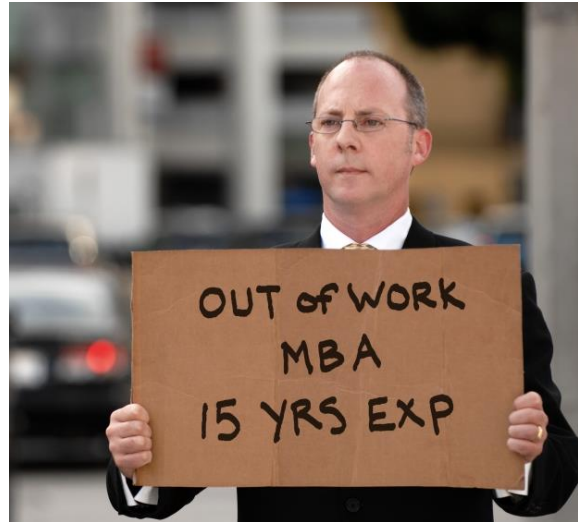
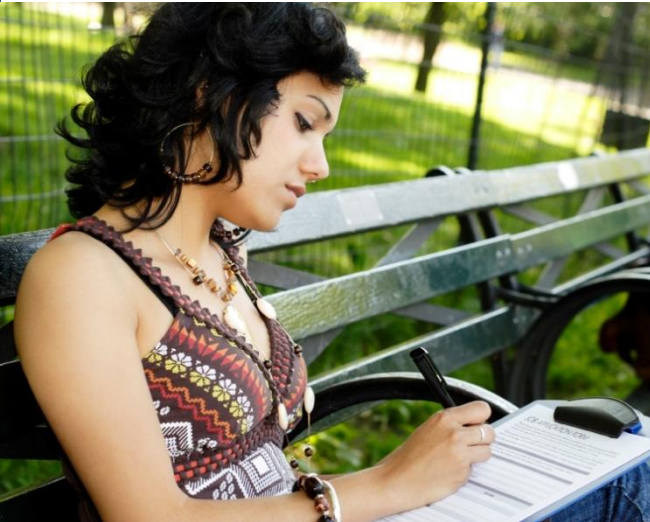


WorkSource

The Path to Employment



WorkSource Vancouver
204 SE Stonemill Drive Suite 215
Vancouver, WA 98684

HOURS: M-F Open 8 am to 5pm
except Wednesday opening at 9:30 am



A proud partner of the [AmericanJobCenter](#) network

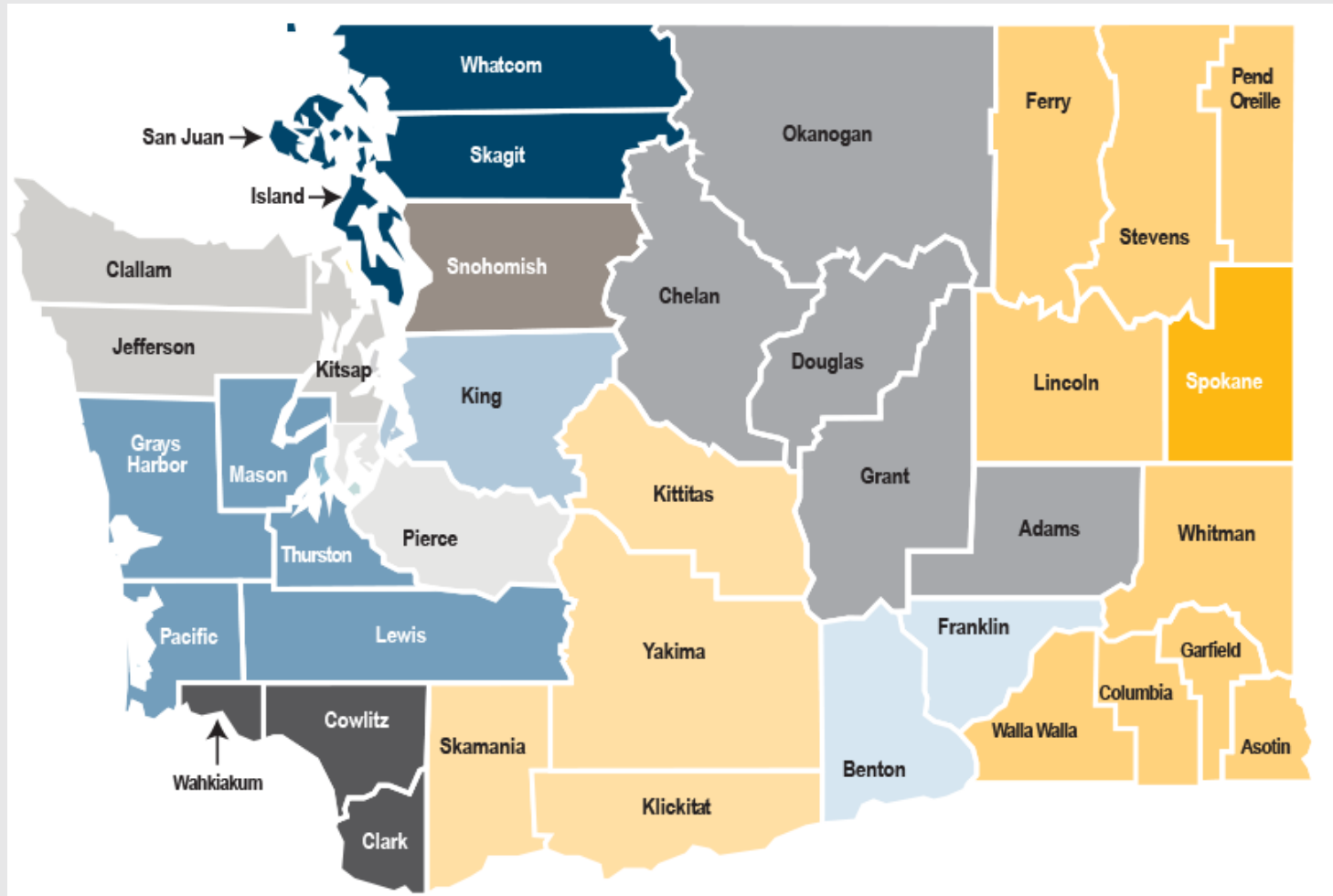
WorkSource is an equal opportunity employer/program. Auxiliary aids and services are available upon request to individuals with disabilities. Washington Relay Service: 711

About Us

Our Commitment

- To raise the skill level of the whole workforce.
- To ensure we are equipping people with the skills and qualifications that they need to achieve their full potential.
- To support our local businesses and the economy.

Workforce Development Areas



Our Staff

Face-to-face support

- Workshops for job readiness
- Skills assessment
- Free employment resources
- Training
- Wage & Labor Market information
- Meet employers

Veterans

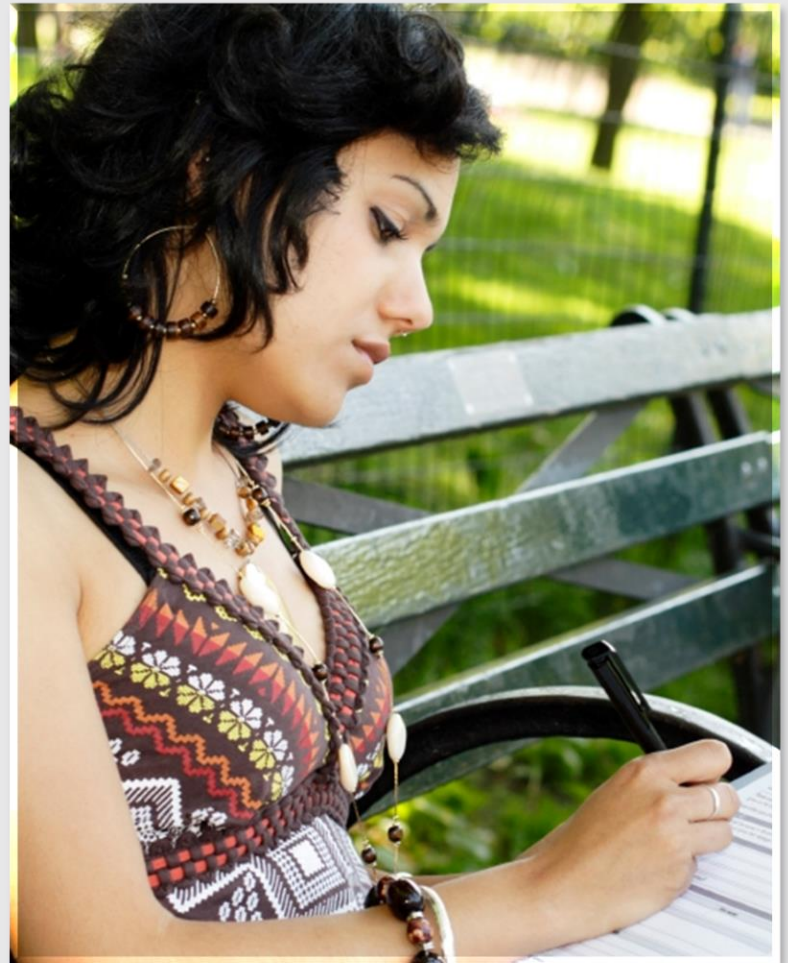
- Priority service at check-in
- Veteran focused job fairs with local employers
- If eligible, intensive case management



Programs

Basic Food Employment and Training Program

- Create a dynamic resume
- Improve your interview skills
- Search for and find jobs
- Evaluate career options
- Attain new job skills
- Start a career



WorkFirst

Temporary Assistance for Needy Families (TANF)

Assist recipients with:

- Training opportunities

- Education in money management

- Skills to obtain quality employment

Specialty Workshops

- Education and Training Orientation
- Justice Involved
- Mature Workers
- Strategies for Success~ Personal Growth Cohort



www.worksourcewa.com



Search thousands of jobs on WorkSource Washington:



 JOB SEEKER

 EMPLOYER

[My WorkSource](#) ▾

[Career tools](#) ▾

[Resources](#) ▾

[About us](#) ▾

[Select language](#) ▾




JOB SEEKER
FIND THE RIGHT
OPPORTUNITY. 

WELCOME TO
WORKSOURCE
WASHINGTON

EMPLOYER
FIND THE RIGHT
CANDIDATE. 

Resources

3 IMPORTANT UPDATES AND ALERTS (3)

 **Employment Security Department**
WASHINGTON STATE

Search

eServices Login Languages

Home Unemployment Paid Leave Jobs & Training Unemployment Taxes **Employer Resources** Labor Market Info Newsroom

English | Español

About employees menu


FREQUENTLY USED LINKS

- The SharedWork Program
- Work Opportunity Tax Credit (WOTC)
- The H-2A Program
- Business layoff assistance
- YesVets
- Employer and collections FAQ

Employer resources

Whether you need to hire employees, are facing layoffs, or have to let an employee go, we have resources and information that can help you.

On this page



<https://esd.wa.gov/about-employees>

Questions?

Thank you for your time.

Traci Wise

Training Facilitator

Traci.wise@esd.wa.gov

360.735.5015