



USING DATA TO EXPLAIN HEALTH DISPARITIES & TARGET INTERVENTIONS

Office of Environmental Public Health Sciences



Health Disparities

Many dimensions contribute to differences in health outcomes between population groups.

- Race
- Ethnicity
- Sex
- Sexual identity
- Disability
- Socioeconomic status
- Geographic location (urban vs. rural)

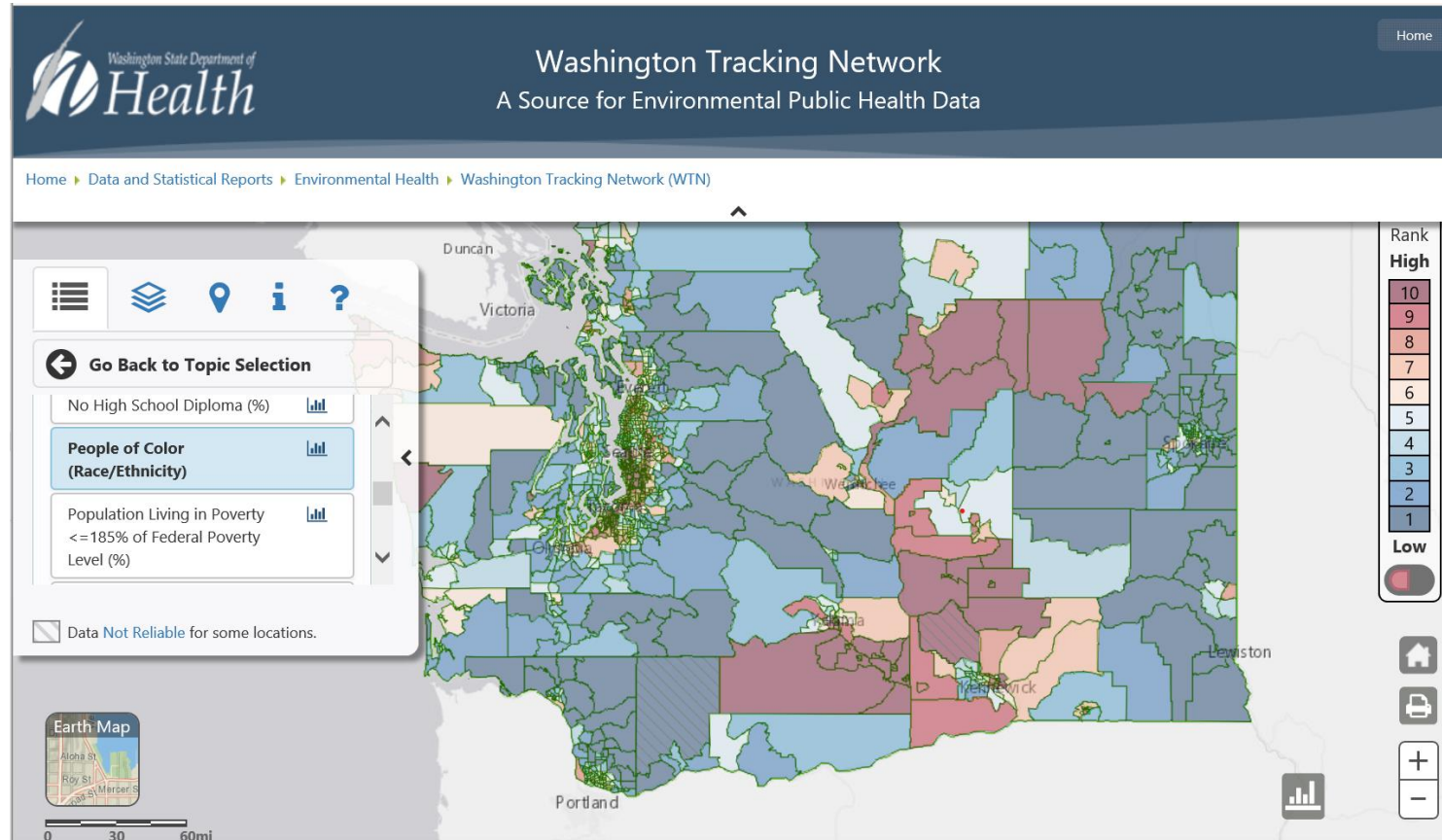
Steps Towards Promoting Equity, Undoing Inequity

We all have a role.

We can learn about:

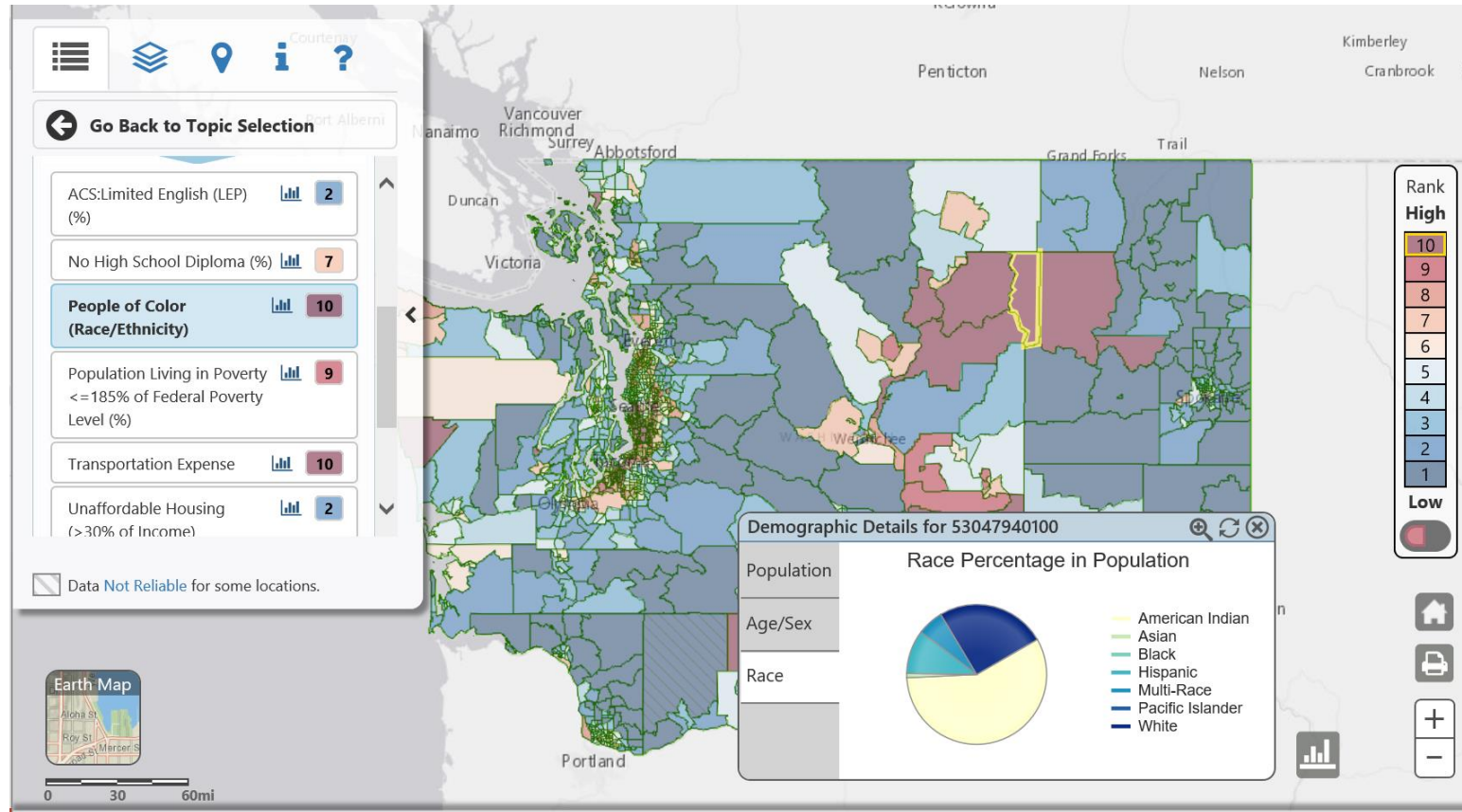
- The influence of race and place on health
- Cultural competency
- Opportunities for involvement
- **Data** and tools for policy and project planning

Disparities: People of Color



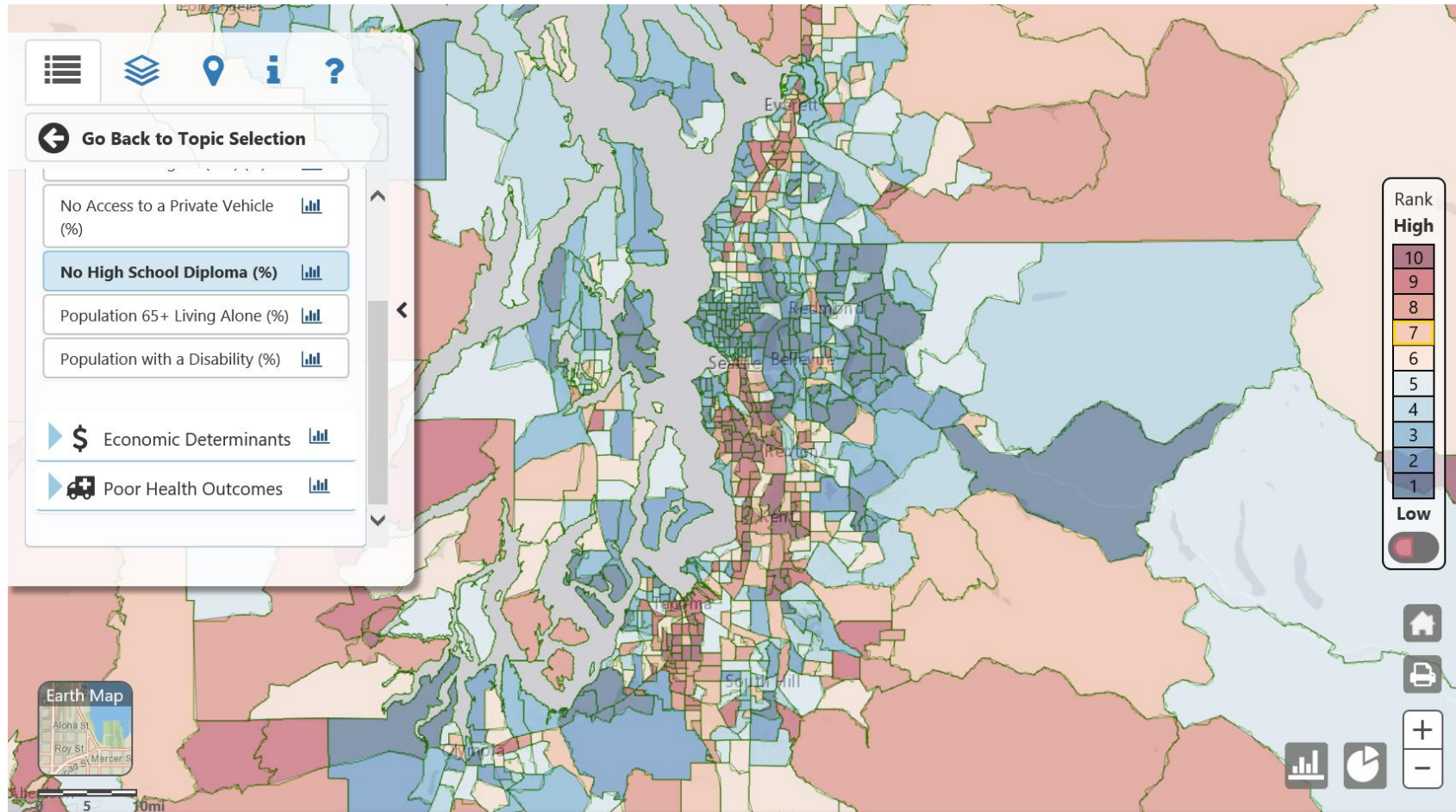
www.doh.wa.gov/ibl

Disparities: People of Color



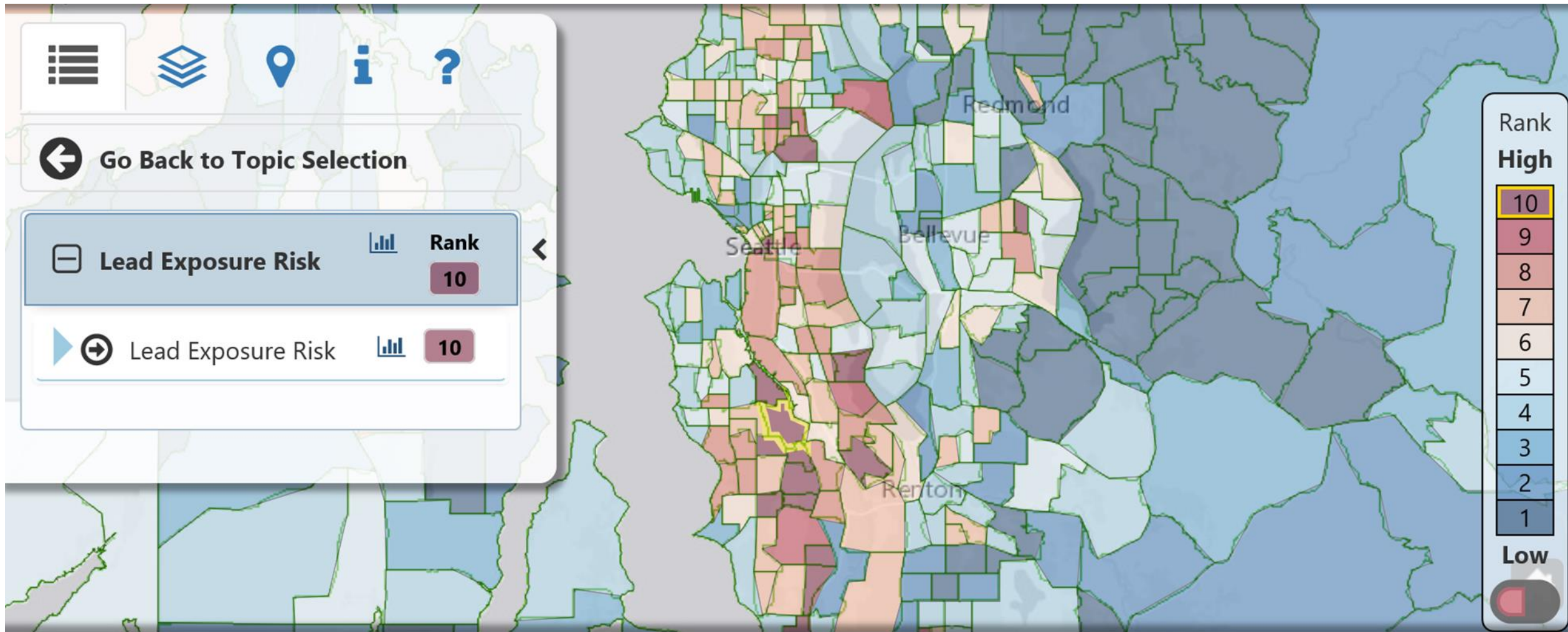
www.doh.wa.gov/ibl

Low Educational Attainment

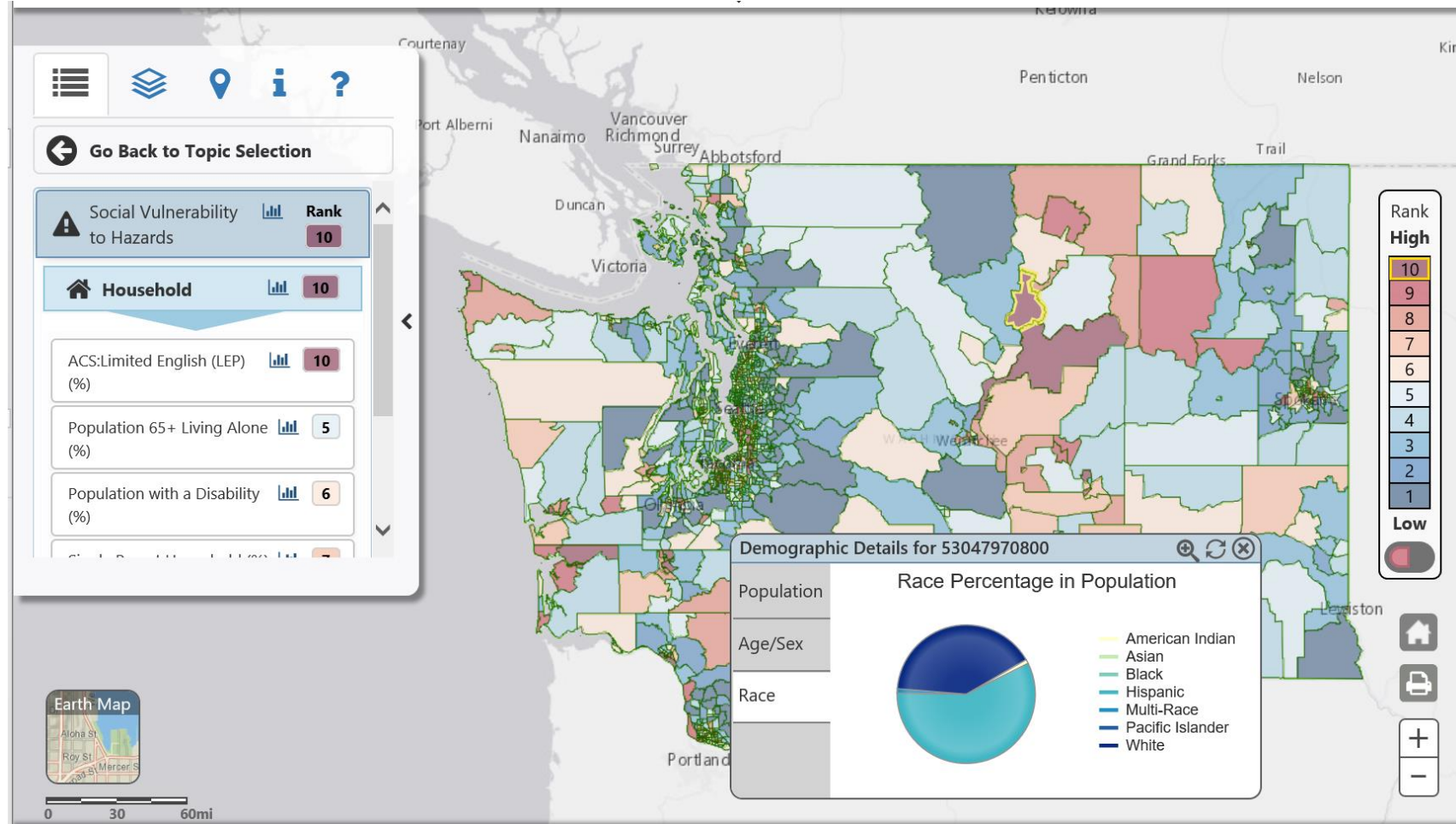


www.doh.wa.gov/ibl

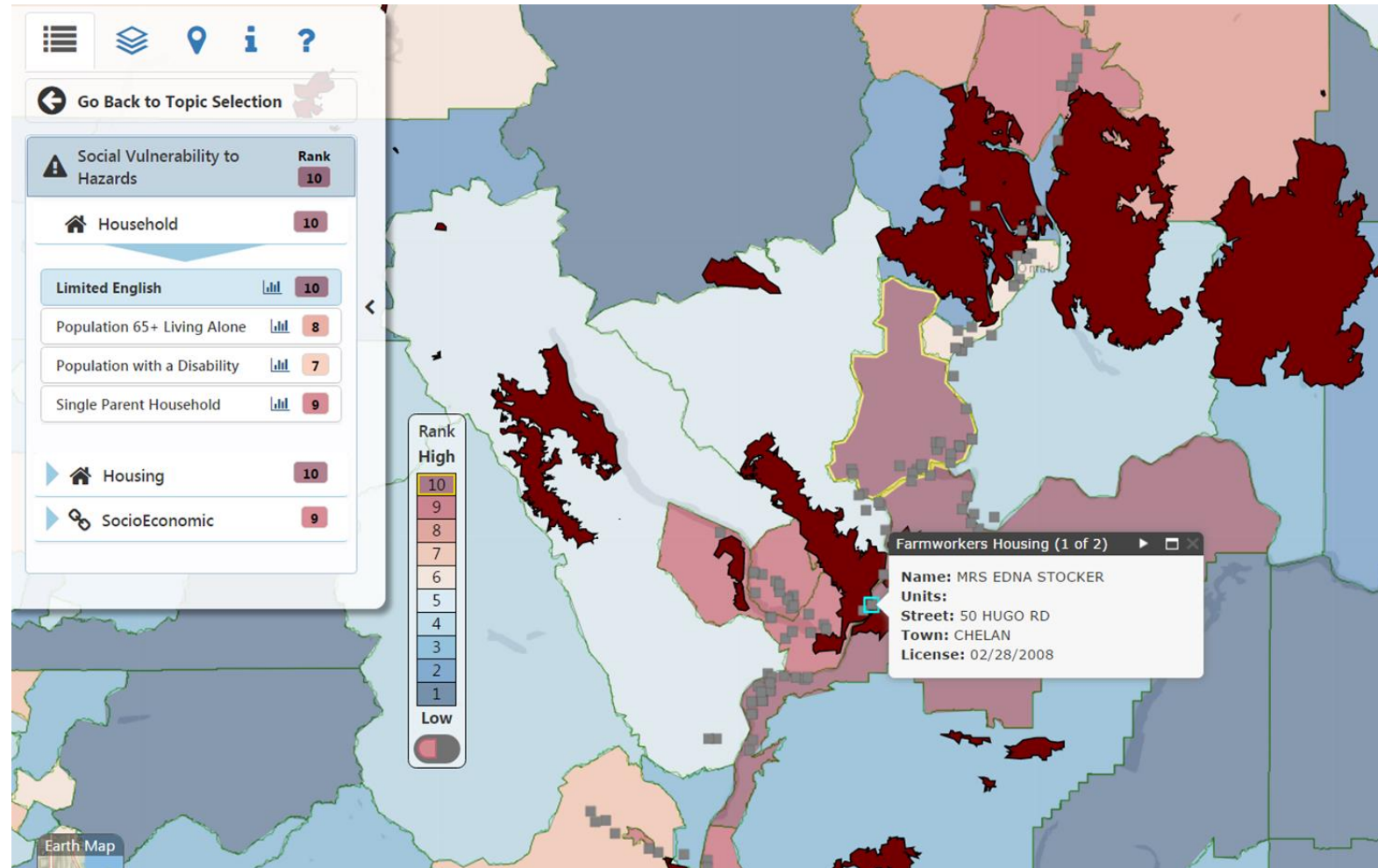
Examples: Lead Poisoning



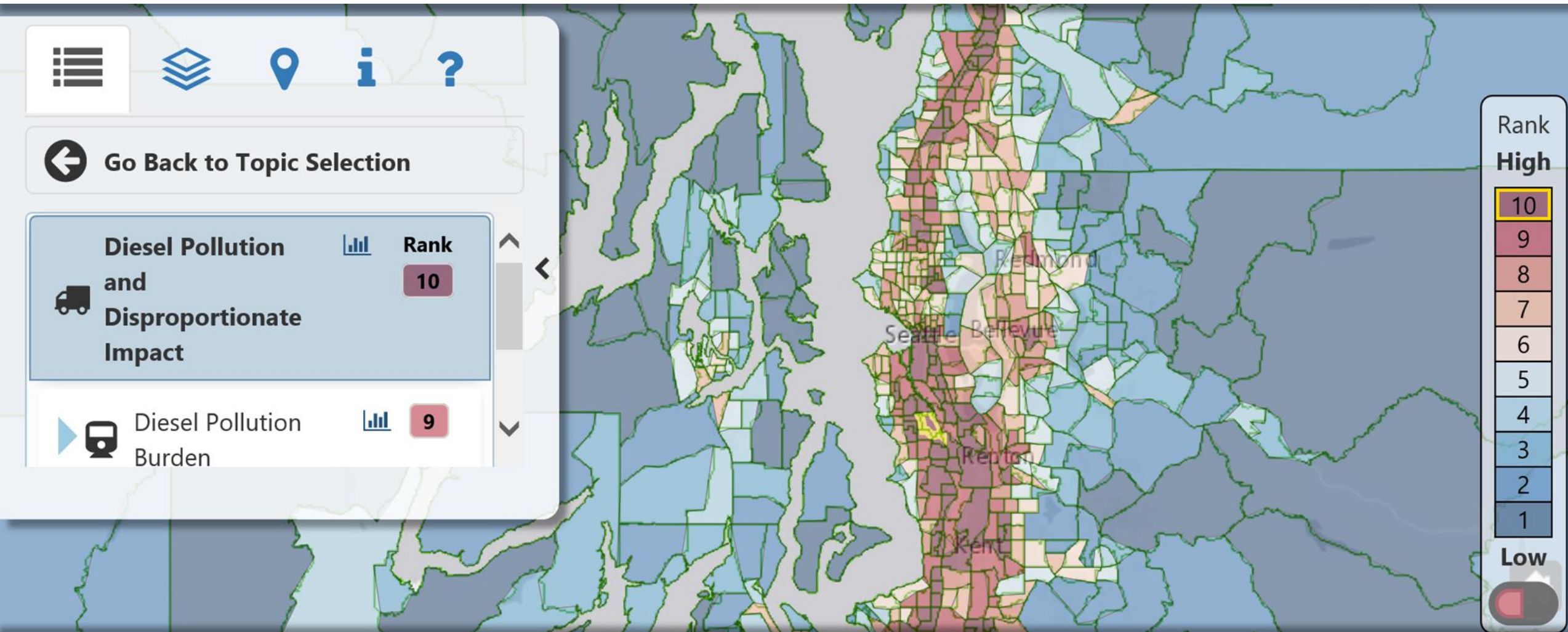
Examples: Emergency Response



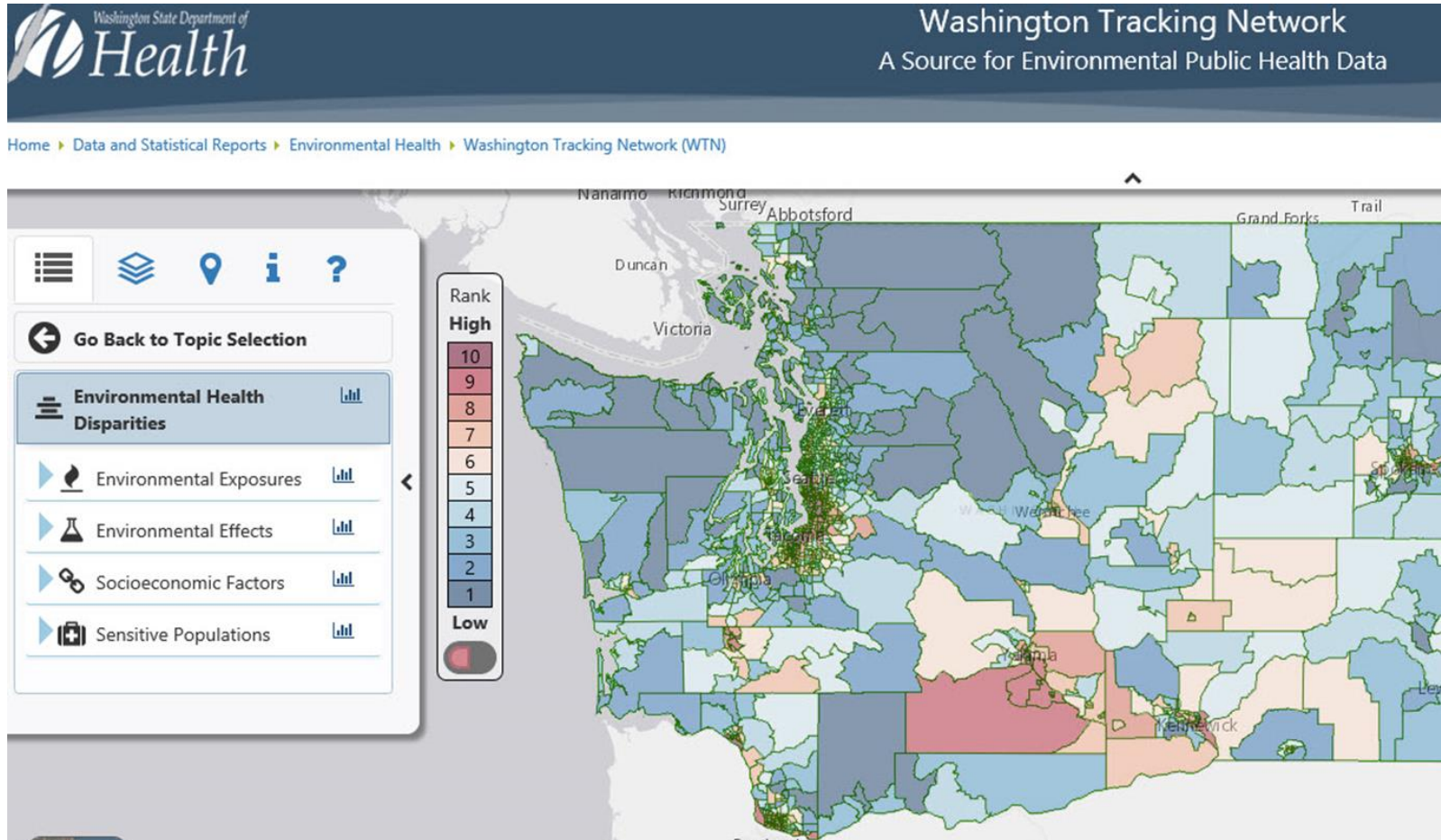
Examples: Wildfires



Examples: Distribution of VW Settlement \$

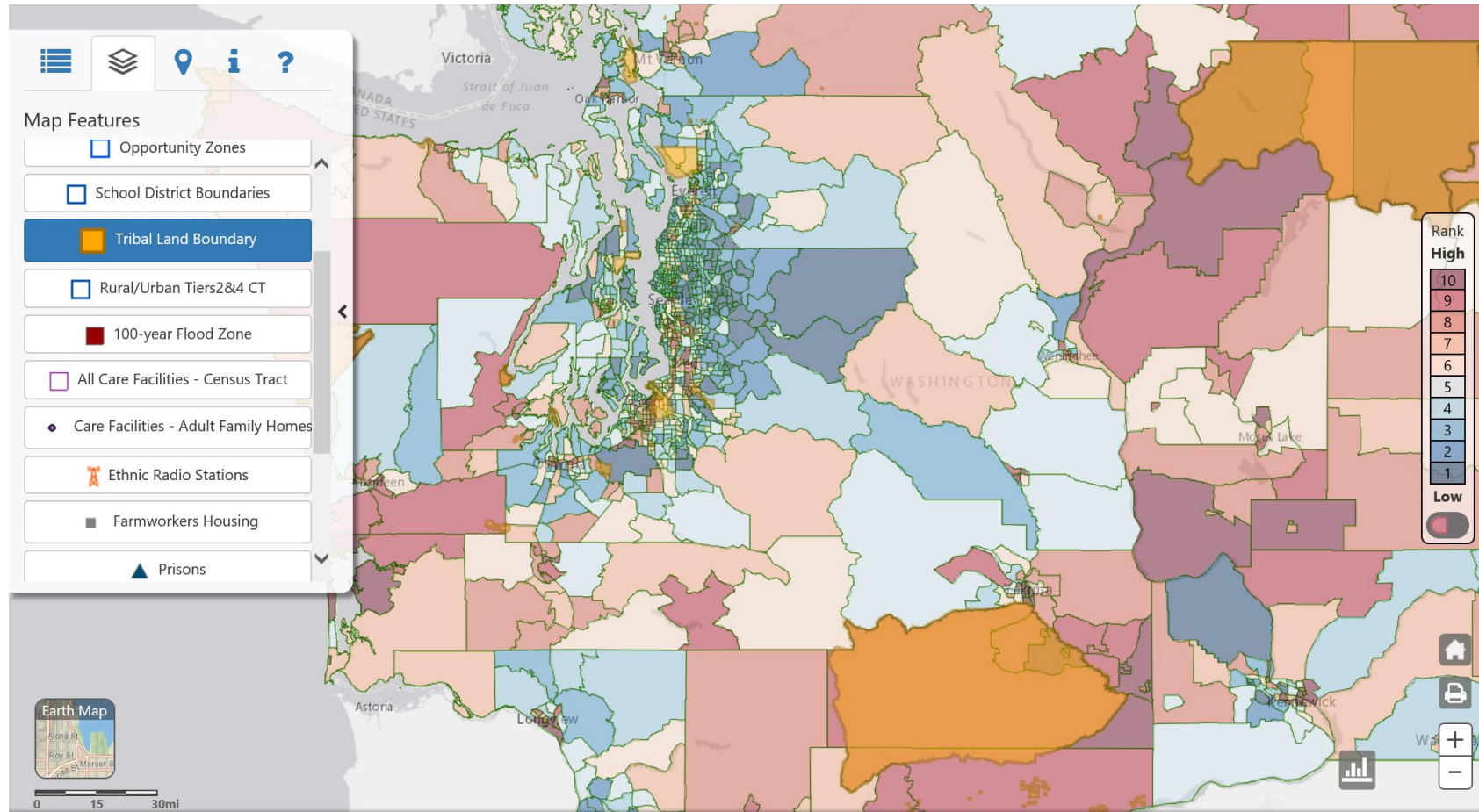


Environmental health disparities map



- Can be used to target public investments to buffer historic environmental health impacts

Add context with map layers





Washington State Department of

Health